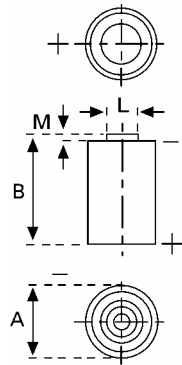


## Data Sheet



**Type Number** ..... 6127  
**Designation IEC** ..... ---  
**System** ..... Li-Manganese dioxide / Organic Electrolyte

**UL Recognition:**..... MH13654 (N)  
**Nominal Voltage** ..... 3 V  
**Typical Capacity C** ..... 950 mAh  
 Load 5.6 kOhm, at 20°C down to 2 V

**Weight (approx.)** ..... 11,5 g  
**Volume** ..... 5 ccm  
**Coding**..... Date of Manufacturing Quater/Year

**Temperature Ranges**

	min	max.
Storage	-55°C	75 °C
Discharge	-30°C	75°C

**Dimensions**

	min	max.
Diameter (A)	14,45	14,75
Height (B)	24,9	25,1
Shoulder Diameter[L]	7	
Shoulder Height [M]	0,6	

**Segment** ..... Electronic

**Main Applications** ..... Electronic

### Typical Capacities (at 20°C)

Discharge Type	Load	End Voltage:	2.0 V
Continuous 24h/d,7d/w	5600 Ω	Time:	1860 h
		Capacity [mAh]:	950
		Energy [mWh]:	2700
Continuous 24h/d,7d/w	2000 Ω	Time:	670 h
		Capacity [mAh]:	930
		Energy [mWh]:	2600
Continuous 24h/d,7d/w	1000 Ω	Time:	335 h
		Capacity [mAh]:	900
		Energy [mWh]:	2400
Constant current	50 μA	Capacity [mAh]:	1000

All Data contained herein is for single cells  
 For battery applications, performance data may vary from single cell data, depending on specific battery configuration