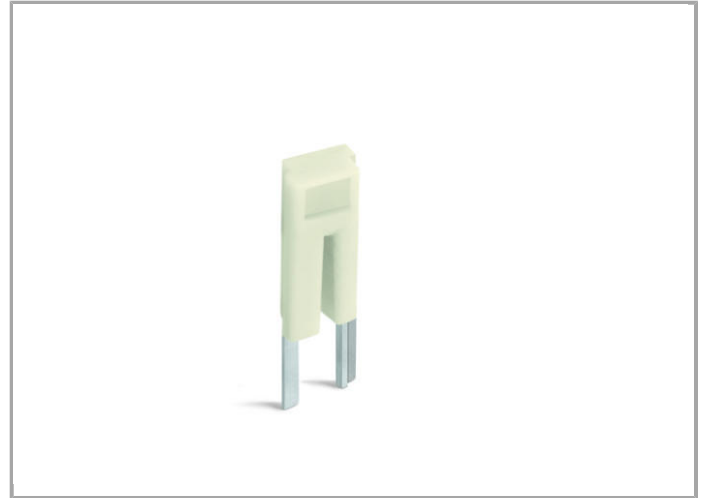
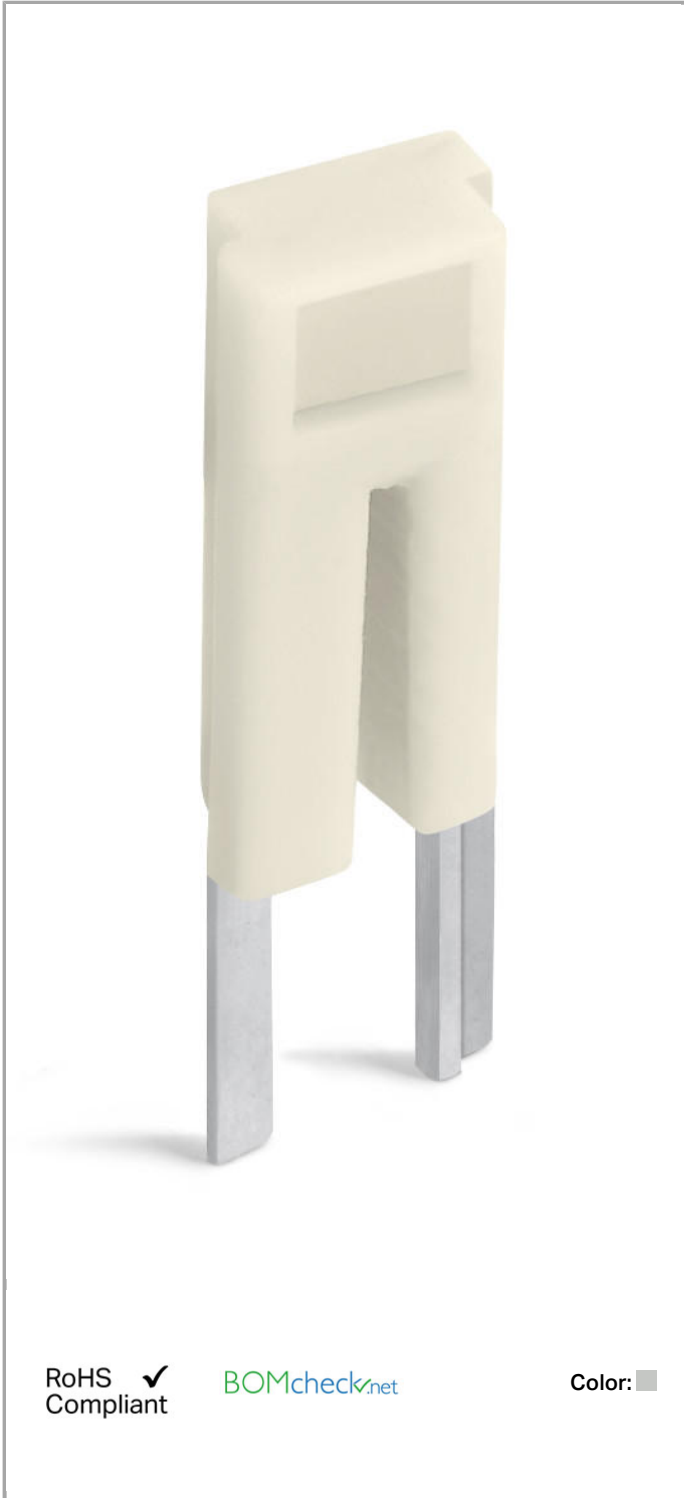


Data sheet | Item number: 2002-400

Adjacent jumper for continuous commoning; insulated; 2-way; Nominal current 25 A



www.wago.com/2002-400



**Data****Electrical data****Ratings per IEC/EN 60664-1**

Rated voltage (III / 3)	800 V
Rated current	25 A

Geometrical Data

Width	4.1 mm / 0.161 inch
Depth	5.7 mm / 0.224 inch

Material Data

Color	light gray
Fire load	0.005 MJ
Weight	0.74 g

Commercial data

Packaging type	bag
Country of origin	DE
GTIN	4055143686877
Customs Tariff No.	85366990990
Product Group	22 (TOPJOB S)

Downloads**Documentation****Bid Text**

2002-400	Oct 20, 2017	DOC 24.1 kB	Download
----------	--------------	----------------	----------

smartDATA**CAD data**

3D Download 2002-400	URL	Download
----------------------	-----	----------



Product family

TOPJOB® S

TOPJOB® S: In various industrial applications and modern building installations, WAGO's wide and versatile range of rail-mount terminal blocks provides more than just reliable electrical connections.

[Learn more about the product family.](#)

[Show all products from the family](#)

Subject to changes.