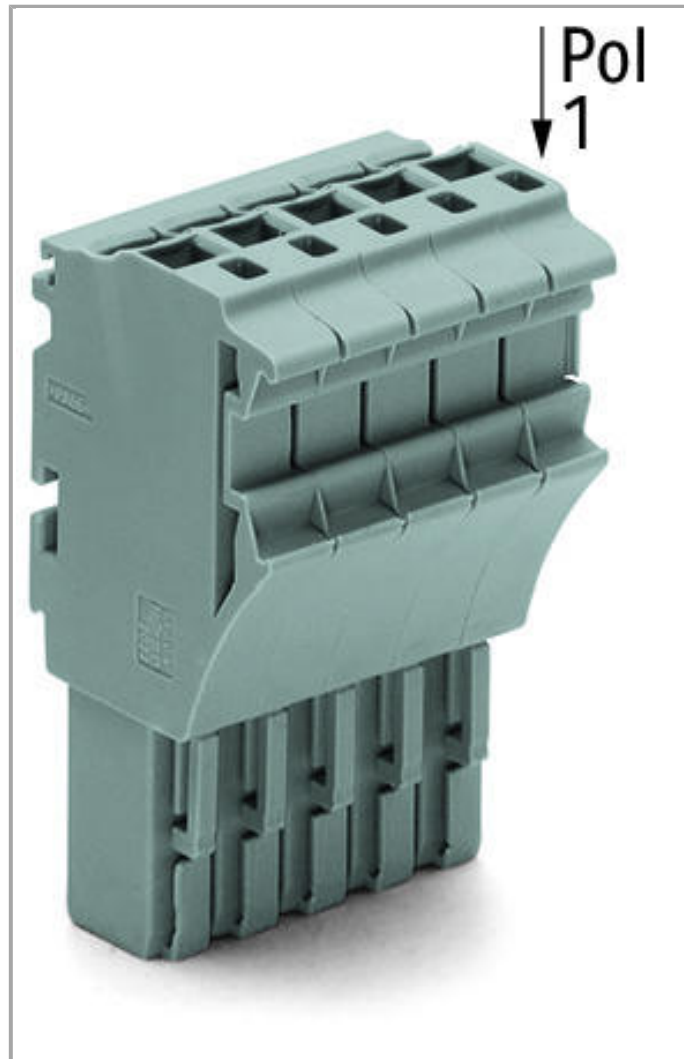


Data sheet | Item number: 2022-106/000-012

1-conductor female plug; 2.5 mm<sup>2</sup>; 6-pole

[www.wago.com/2022-106/000-012](http://www.wago.com/2022-106/000-012)



RoHS   
Compliant

[BOMcheck.net](https://www.bomcheck.net)

Color: ■

### Item description

According to EN 61984, pluggable connectors without current interrupting capacity shall not be mated and unmated when live or under load.

### Data

#### Electrical data



### Ratings per IEC/EN 60664-1

Rated voltage (III / 3)	690 V
Rated impulse voltage (III / 3)	6 kV
Rated current	24 A
Rated current (2)	32 A
Legend (ratings)	(III / 3) $\triangleq$ Overvoltage category III / Pollution degree 3

### Connection data

Connection technology	Push-in CAGE CLAMP®
Actuation type	Operating tool Push-in
Connectable conductor materials	Copper Aluminum
Nominal cross section	2.5 mm <sup>2</sup>
Solid conductor	0.25 ... 4 mm <sup>2</sup> / 22 ... 12 AWG
Solid conductor, push-in termination	0.75 ... 4 mm <sup>2</sup> / 18 ... 12 AWG
Fine-stranded conductor	0.25 ... 4 mm <sup>2</sup> / 22 ... 12 AWG
Fine-stranded conductor with ferrule, push-in termination, from	0.75 mm <sup>2</sup> / 18 AWG
Strip length	10 ... 12 mm / 0.39 ... 0.47 Inch
No. of poles	6
Total number of connection points	6
Total number of potentials	6
Type of wiring	Front-entry wiring

### Geometrical Data

Width	31.2 mm / 1.228 inch
Height	40.5 mm / 1.594 inch
Depth	22.4 mm / 0.882 inch

### Mechanical data

Marking level	Side marking
---------------	--------------

### Plug connection

Contact type (pluggable connector)	Female connector/socket
Connector connection type	for conductors

### Material Data

Color	orange
Insulating material	Polyamide 66 (PA 66)




Fire load	0.325 MJ
Weight	19.74 g

**Commercial data**


Country of origin	DE
GTIN	4045454971076
Customs Tariff No.	85366990990
Product Group	18 (X-COM-System)

**Compatible products**

**ferrule**

	<p><b>Item no.: 216-241</b>                  Ferrule; Sleeve for 0.5 mm<sup>2</sup> / AWG 22; insulated; electro-tin plated; electrolytic copper; gastight crimped; acc. to DIN 46228, Part 4/09.90</p>	<a href="http://www.wago.com/216-241">www.wago.com/216-241</a>
--	---	--

**tools**

	<p><b>Item no.: 210-720</b>                  Operating tool with partially insulated shaft; Type 2, blade (3.5 x 0.5) mm</p>	<a href="http://www.wago.com/210-720">www.wago.com/210-720</a>
--	--	--

**Downloads**

**Documentation**

**Bid Text**

2022-106/000-012	Aug 14, 2018	DOCX 15.5 kB	Download
------------------	--------------	-----------------	----------

**smartDATA**

**CAD data**

3D Download 2022-106/000-012	URL	Download
------------------------------	-----	----------



## Product family

**X-COM S**

[Show all products from the family](#)

Subject to changes.

---

WAGO Kontakttechnik GmbH & Co. KG

Hansastr. 27

32423 Minden

Phone: +49571 887-0 | Fax: +49571 887-169

Email: [info.de@wago.com](mailto:info.de@wago.com) | Web: [www.wago.com](http://www.wago.com)

Do you have any questions about our products?

We are always happy to take your call at +49 (571) 887-44222.