

# 1700 & 1750 Toggle Switches 16A 250Vac Single and Double Pole



- ▶ Nylon toggle switches
- ▶ Ratings up to 20A, 250V ac
- ▶ Single and double pole
- ▶ Wide choice of terminals
- ▶ Choice of circuit options including 3 position
- ▶ Flat & round actuator options



16(4)A 250Vac T85

UL 20A 250Vac Non Ind (Single pole)  
 UL 16A 250Vac Non Ind (Double pole)  
 UL CSA (2 pos types) 250Vac 1hp, 125Vac 1/2hp  
 UL CSA (3 pos types) 250Vac 1/2hp, 125Vac 1/4hp  
 CSA 16A 250Vac Non Ind  
 UL 85°C, file E45221, CSA file LR10990  
 UL and CSA N/A on momentary types

In house test

Inrush 36A to EN61058-1 & 20A 28Vdc

RoHS

RoHS compliant

Selective "A, B, C" and "OFF, A, A+B" circuits at 5 amp also available.  
 3mm contact gap except where marked  $\mu$ .  
 Technical data on pages 4 & 5.

**C 1750 H O - - -**

TERMINAL FUNCTION ACTUATOR BODY OPTIONS

TERMINAL	FUNCTION	ACTUATOR
<b>C</b>  6.3 x 0.8	<b>Single pole</b>  <b>1700</b>  ON - OFF	<b>Double pole</b>  <b>1750</b> 
<b>H</b>  4.8 x 0.8	<b>1710 <math>\mu</math></b>  ON - ON	<b>1760 <math>\mu</math></b>  
<b>K</b>  2.8 x 0.8	<b>1720 <math>\mu</math></b>  ON - OFF - ON	<b>1770 <math>\mu</math></b>  
<b>T</b>  Solder	<b>1721 <math>\mu</math></b>  ON - OFF - ON (momentary 1 side)	<b>R</b>   The switch is on between centre terminals (2 & 5) and the terminals over which the lever is positioned.
<b>X</b>  PCB 0.8 Sq	<b>1722 <math>\mu</math></b>  ON - OFF - ON (momentary 2 sides)	



C1700RO ---



C1700HO ---



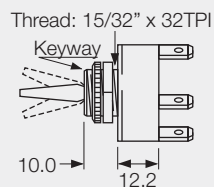
C1760RO ---



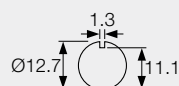
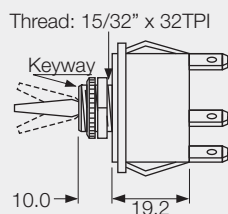
C1750HO ---

▶ BODY	▶ OPTIONS
--------	-----------

**0**  
Single pole



**0**  
Double pole



Panel hole (all types)  
Panel thickness (Max)  
Both nuts - 3.5mm  
Less backnut - 6.5mm

**OPTIONS**

**Neck Seal M539**

Material - Nitrile  
(H & R Actuators)  
Actuator visible



**Cover M1080**

Material - EPDM  
(R Actuator only)



**Cover M331**

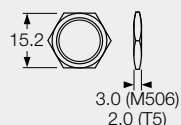
Material - PVC  
(R Actuator only)



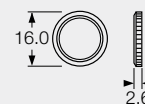
Covers have internal nylon nuts

**Fixing nuts** (Standard is M506 & T92)

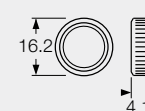
T5 Hex brass  
M506 Hex nylon



T92 Knurled brass -  
slotted



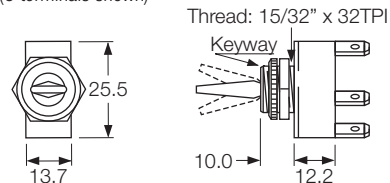
M279 Knurled nylon



**DIMENSIONS** (mm)

**Single Pole**

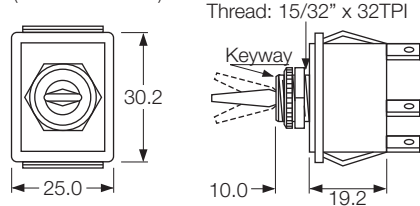
(C terminals shown)



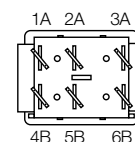
Optional  
P232 plate  
SP or DP

**Double Pole**

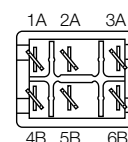
(C terminals shown)



Without barrier



With barrier



Optional terminal barrier M441.