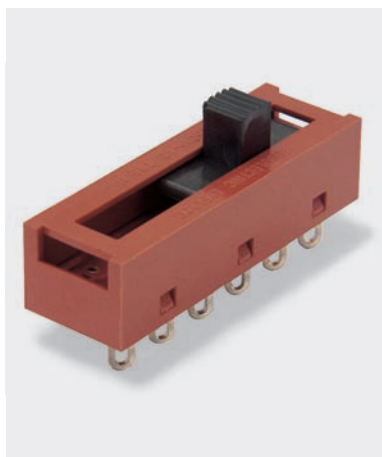


# 2000 Slide Switches - up to 5 position 10A 250Vac



- ▶ Slide switches
- ▶ Ratings up to 16A, 250V ac
- ▶ PCB and solder terminals
- ▶ 2, 3, 4 and 5 position
- ▶ Choice of circuits
- ▶ Choice of actuators



10A 250Vac T85  
6(3)A 250Vac T85



UL CSA 16A 250Vac Non Inductive  
UL CSA 4A 300Vac  
UL 65°C, file no. E45221, CSA file no. LR10990

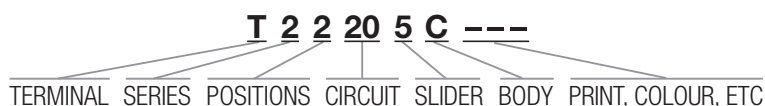


RoHS compliant

μ contact gap

Please specify: Standard action (SP116) or Light action (SP118).  
2000 series lubrication is inorganic and does not degrade plastics.

Technical data on pages 4 & 5.



TERMINAL	SERIES	POS'N	CIRCUIT <small>Viewed from back</small>	SLIDER								
<p><b>K</b></p> <p>2.8 x 0.8</p> <p><b>R</b></p> <p>2.8 x 0.8</p> <p><b>T</b></p> <p>Solder</p> <p><b>X</b></p> <p>PCB 0.8 Sq.</p> <p><b>Y</b></p> <p>PCB 0.8 Sq. For mounting stability switches have extra "support" terminals</p> <p>* Nominal - Dimension varies with body type. For exact figure call sales</p>	2	2 Switching positions	10		<b>0</b>		<b>6</b>		<b>D</b>		<b>L</b>	
			20		<b>1</b>		<b>7</b>		<b>E</b>		<b>N</b>	
			30		<b>2</b>		<b>9</b>		<b>G</b>		<b>P</b>	
			40		<b>3</b>		<b>A</b>		<b>H</b>		<b>R</b>	
		3 Switching positions	10		<b>4</b>		<b>B</b>		<b>J</b>		<b>S</b>	
			20		<b>5</b>		<b>C</b>		<b>K</b>		<b>T</b>	
			30									
			40									
		4 Switching positions	10									
			20									
			30									
			40									
5 Switching positions	10											
	20											
	30											
	40											



X22205C ---



T2220EC ---



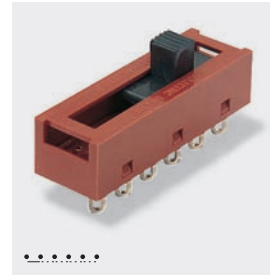
T23206A ---



T24306A ---



T25302A ---

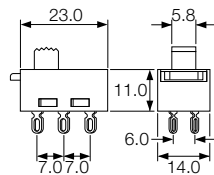


T25100A ---

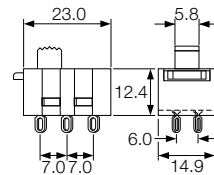
BODY		OPTIONS
<b>C</b> 2 positions 	<b>H</b> 2 positions 	<b>Colour</b> For custom slider colours call sales. A full range is available for large orders
<b>A</b> 3 positions 	<b>H</b> 3 positions 	
<b>A</b> 4 positions 	<b>H</b> 4 positions 	
<b>A</b> 5 positions 		

**DIMENSIONS** (mm)

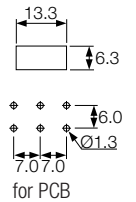
**2 Position C body**



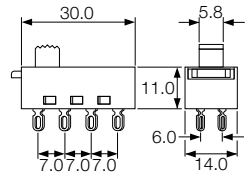
**2 Position H body**



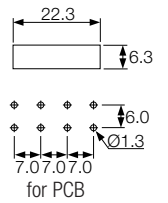
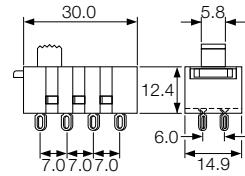
**Cut-out/PCB Matrix**



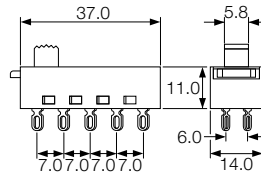
**3 Position A body**



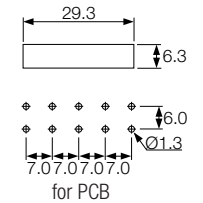
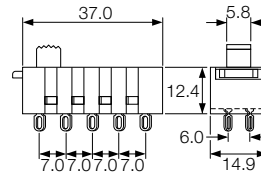
**3 Position H body**



**4 Position A body**



**4 Position H body**



**5 Position A body**

