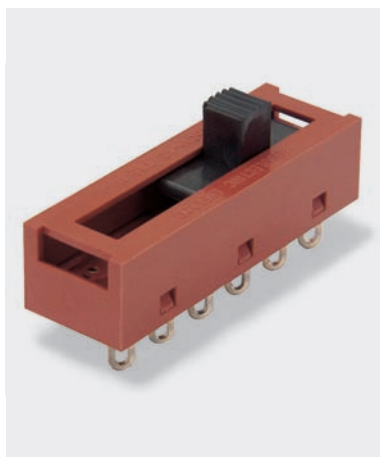


2000 Slide Switches - up to 5 position 10A 250Vac



- ▶ Slide switches
- ▶ Ratings up to 16A, 250V ac
- ▶ PCB and solder terminals
- ▶ 2, 3, 4 and 5 position
- ▶ Choice of circuits
- ▶ Choice of actuators



10A 250Vac T85
6(3)A 250Vac T85



UL CSA 16A 250Vac Non Inductive
UL CSA 4A 300Vac
UL 65°C, file no. E45221, CSA file no. LR10990

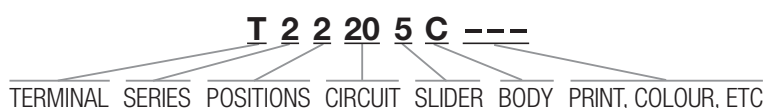


RoHS compliant

μ contact gap

Please specify: Standard action (SP116) or Light action (SP118).
2000 series lubrication is inorganic and does not degrade plastics.

Technical data on pages 4 & 5.



TERMINAL	SERIES	POS'N	CIRCUIT <small>Viewed from back</small>	SLIDER								
<p>K</p> <p>2.8 x 0.8</p> <p>R</p> <p>2.8 x 0.8</p> <p>T</p> <p>Solder</p> <p>X</p> <p>PCB 0.8 Sq.</p> <p>Y</p> <p>PCB 0.8 Sq. For mounting stability switches have extra "support" terminals</p> <p>* Nominal - Dimension varies with body type. For exact figure call sales</p>	2	2 Switching positions	10		0		6		D		L	
			20		1		7		E		N	
			30		2		9		G		P	
			40		3		A		H		R	
		3 Switching positions	10		4		B		J		S	
			20		5		C		K		T	
			30									
			40									
		4 Switching positions	10									
			20									
			30									
			40									
5 Switching positions	10											
	20											
	30											
	40											



X22205C ---



T2220EC ---



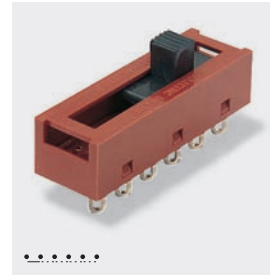
T23206A ---



T24306A ---



T25302A ---

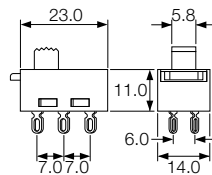


T25100A ---

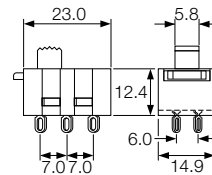
BODY		OPTIONS
C 2 positions 	H 2 positions 	Colour For custom slider colours call sales. A full range is available for large orders
A 3 positions 	H 3 positions 	
A 4 positions 	H 4 positions 	
A 5 positions 		

DIMENSIONS (mm)

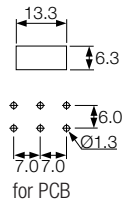
2 Position C body



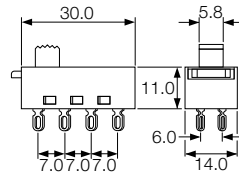
2 Position H body



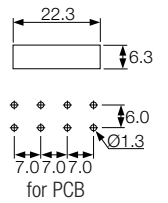
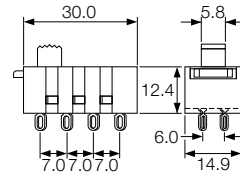
Cut-out/PCB Matrix



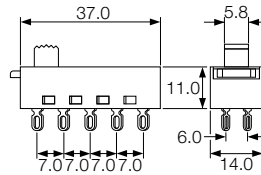
3 Position A body



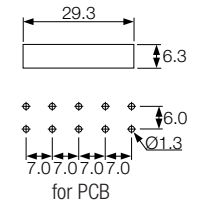
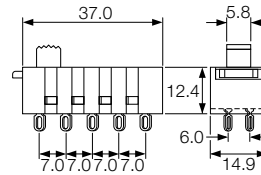
3 Position H body



4 Position A body



4 Position H body



5 Position A body

