

MICRO SWITCH

A DIVISION OF MINNEAPOLIS-HONEYWELL REGULATOR COMPANY
 FEDERAL MFR. CODE 91929

SWITCH - BASIC

CATALOG LISTING
BZ-2RW822-A2

APF1500

FAA-PMA

BZ-2RW822-A2

PAGE 1 OF 1

DRAWING NUMBER

15

ISSUE

15

REPLACES

RELEASE NO.

13MAY08

ASD

CHECK

23 AUG 05

RJ

CHECK

0039796

17 APR 82

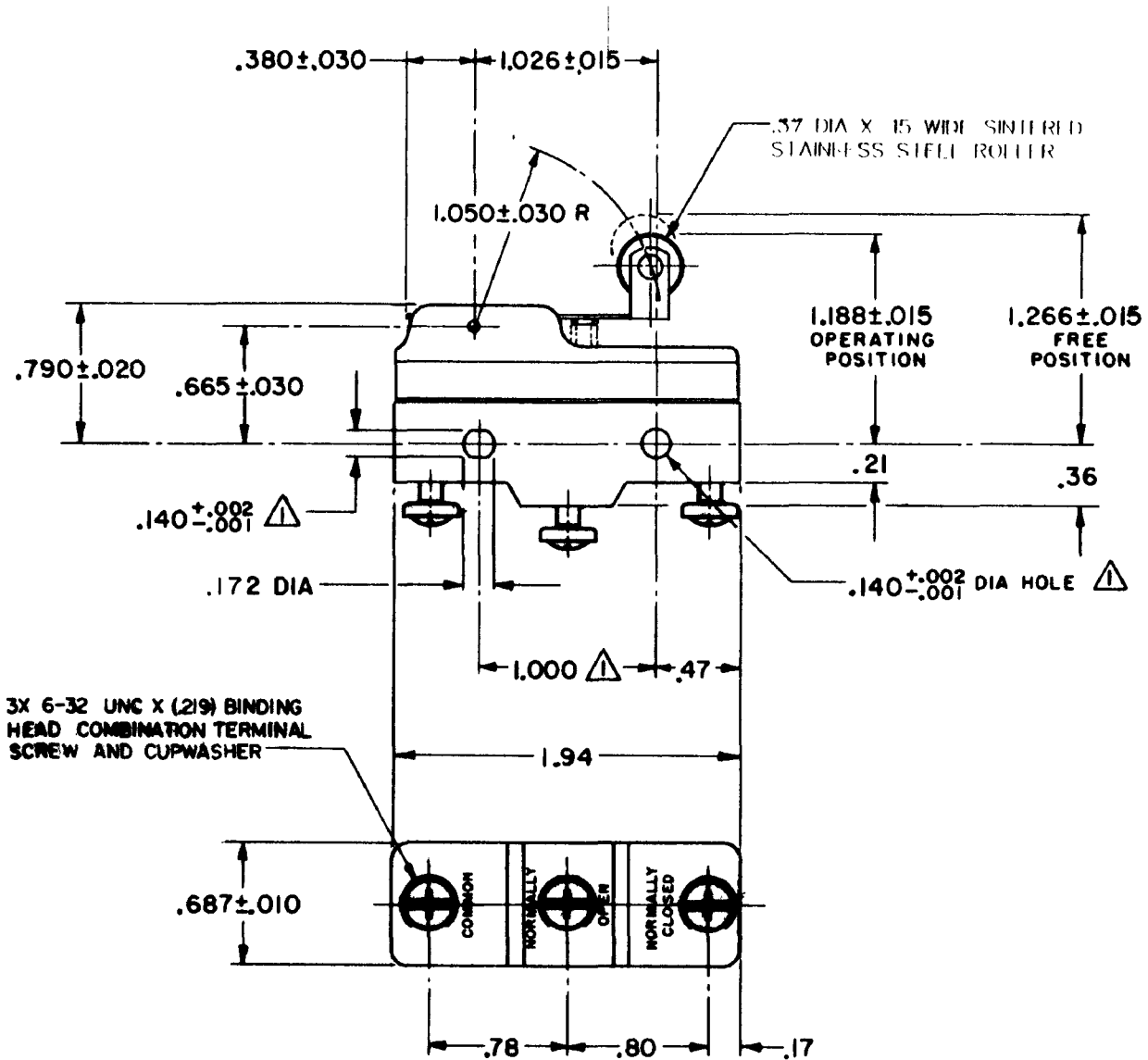
CHECK

17 APR 82

CHECK

5 APRIL 62

GCH



3X 6-32 UNC X (.219) BINDING HEAD COMBINATION TERMINAL SCREW AND CUPWASHER

NOTE -
 ▲ MOUNTING HOLES WILL ACCEPT PINS OR SCREWS OF .139 MAX DIA ON 1.000 ± .002 CENTERS

THIS DRAWING COVERS A PROPRIETARY ITEM AND IS THE PROPERTY OF MICRO SWITCH, A DIVISION OF MINNEAPOLIS-HONEYWELL REGULATOR CO. THIS DRAWING IS NOT TO BE COPIED OR USED WITHOUT THE APPROVAL OF MICRO SWITCH.

CHARACTERISTICS	ELECTRICAL DATA	SCALE -
OPERATING FORCE ----- 6 OZ MAX	CONTACT ARRANGEMENT S P D T	DO NOT SCALE PRINT
RELEASE FORCE ----- 1 1/2 OZ MIN	- L74 - 16A - 125, 250, OR 400 VAC, 2A-600 VAC 1/2 A - 125 VDC; 1/4 A - 250 VDC 1/8 HP - 125 VAC; 1/4 HP - 250 VAC	UNLESS OTHERWISE SPECIFIED DIMENSIONS ARE IN INCHES
DIFFERENTIAL TRAVEL ----- .003 - .020	-L288- -L306- -L315-	TOLERANCES ARE: ONE PLACE (.0) ± .030 TWO PLACE (.00) ± .018 THREE PLACE (.000) ± .008 ANGLES ±
OVERTRAVEL ----- .094 MIN	CE 16A 250V ~ T85 5E4	WEIGHT .076 LB

FO-90378 RASTER

DRAWN