

# MICRO SWITCH

A DIVISION OF MINNEAPOLIS-HONEYWELL REGULATOR COMPANY  
MINNEAPOLIS, MINNESOTA

FED. MFR. CODE 91929

# SWITCH - BASIC

CATALOG LISTING

## BZ-2RW82-A2

APA1000

M BZ-2RW82-A2

PAGE 1 OF 1

DRAWING NUMBER

ISSUE

10

REPLACES

RELEASE NO.

CHECK

23 AUG 05

RJ

CHECK

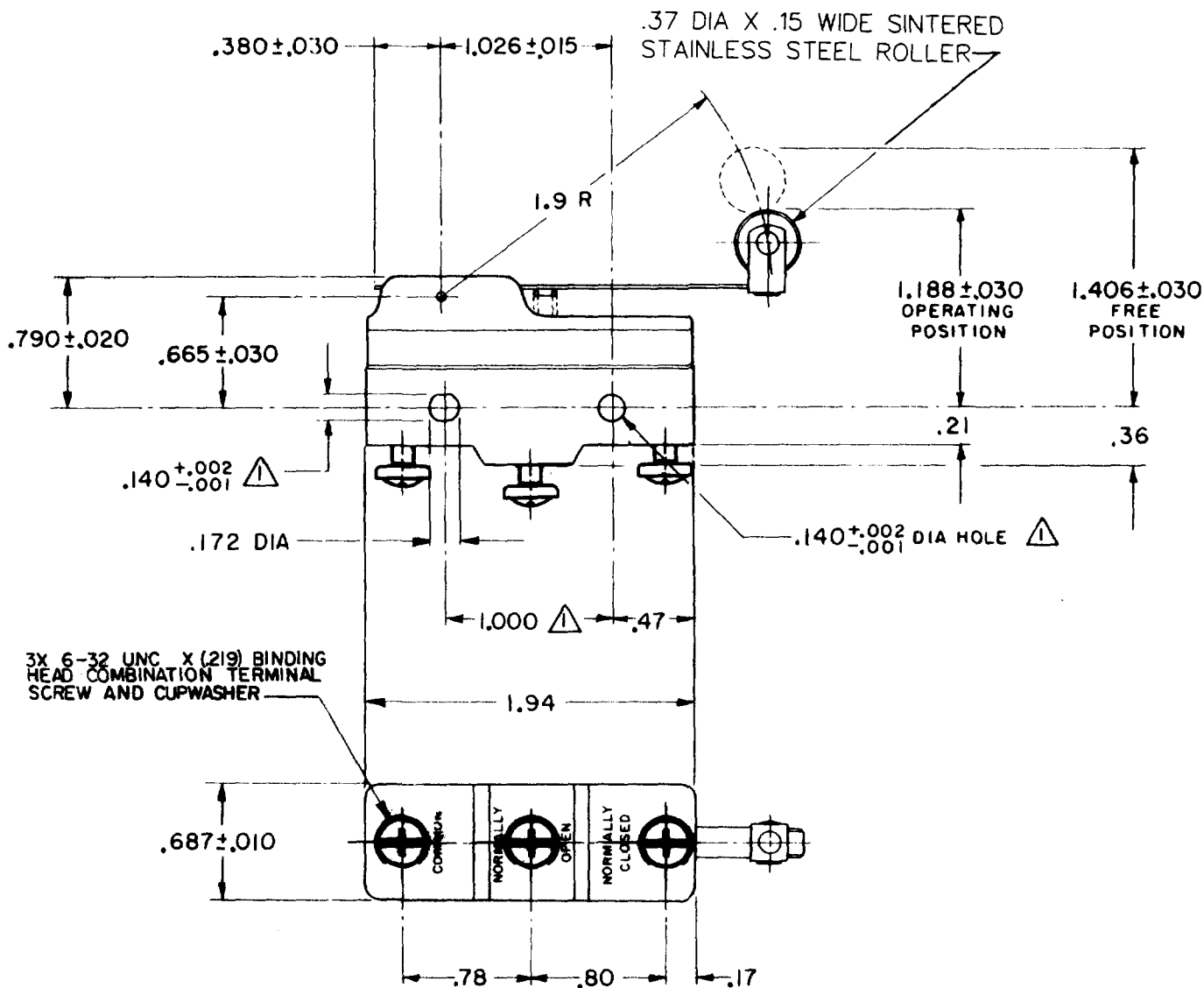
11 APR 62

CHECK

27 MAR 62

GCH

DRAWN



3X 6-32 UNC X (219) BINDING HEAD COMBINATION TERMINAL SCREW AND CUPWASHER

**NOTE**  
 ▲ MOUNTING HOLES WILL ACCEPT PINS OR SCREWS OF .139 MAX DIA ON 1.000 ± .002 CENTERS

THIS DRAWING COVERS A PROPRIETARY ITEM AND IS THE PROPERTY OF MICRO SWITCH, A DIVISION OF MINNEAPOLIS-HONEYWELL REGULATOR CO. THIS DRAWING IS NOT TO BE COPIED OR USED WITHOUT THE APPROVAL OF MICRO SWITCH.

### CHARACTERISTICS

OPERATING FORCE ----- 3 1/2 OZ MAX  
 RELEASE FORCE ----- 3/4 OZ MIN  
 DIFFERENTIAL TRAVEL ----- .004 - .040  
 OVERTRAVEL ----- .156 MIN

### ELECTRICAL DATA

CONTACT ARRANGEMENT  
 S P D T

-L96- 16A-125, 250, OR 480 VAC  
 1/2 A-125 VDC; 1/4 A-250 VDC  
 1/8 HP-125 VAC; 1/4 HP-250 VAC

-L288-  
 -L306-  
 -L315-

CE EN 05 EC  
 16A 250V T85 5E4

### SCALE FULL

DO NOT SCALE PRINT

UNLESS OTHERWISE SPECIFIED  
 DIMENSIONS ARE IN INCHES

**TOLERANCES ARE:**  
 ONE PLACE (.0) ±.030  
 TWO PLACE (.00) ±.015  
 THREE PLACE (.000) ±.005  
 ANGLES ±

WEIGHT .076 LB

FORMTEK

FO-90378