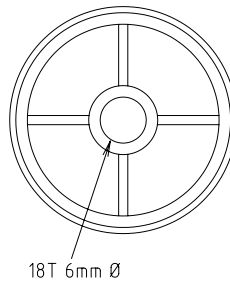
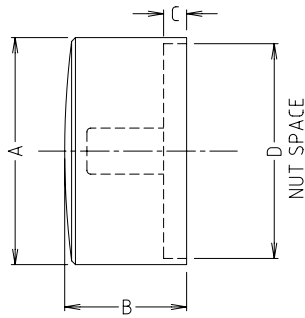
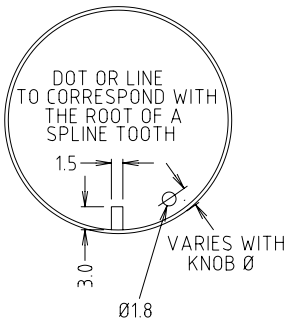


# CLIFF

## KNOBS



P/No.	MODEL	DIM A	DIM B	DIM C	DIM D
FC7230	KMR-15	14.8	15.6	2.2	13.0
FC7231	KMR-20	19.8	17.6	4.0	18.0
FC7232	KMR-25	24.8	18.4	-	23.1
FC7233	KMR-30	29.8	16.0	2.0	28.1
FC7234	KMR-35	35.0	18.5	-	33.1



**FC7230**  
KMR-15 BLK MD 6MM SPL-18T



**FC7231**  
KMR-20 BLK MD 6MM SPL-18T



**FC7232**  
KMR-25 BLK MD 6MM SPL-18T



**FC7233**  
KMR-30 BLK MD 6MM SPL-18T



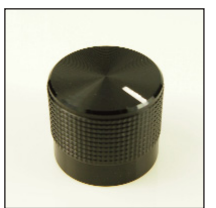
**FC7234**  
KMR-35 BLK MD 6MM SPL-18T



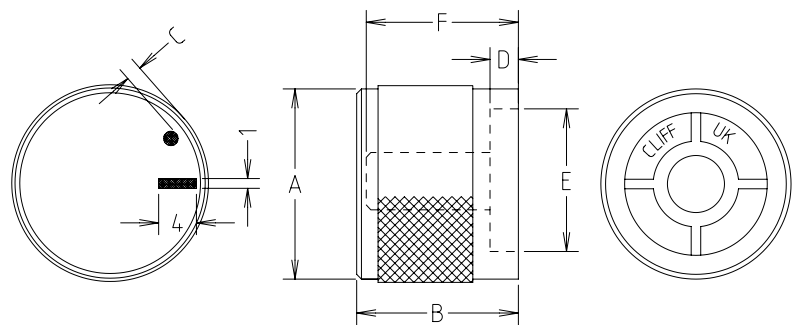
**FC7223**  
KM15B ML 6MM SPL



**FC7225**  
K20B MD 6MM SPL



**FC7225B**  
K20B ML 6MM SPL



P/No.	MODEL	DIM A	DIM B	DIM C	DIM D	DIM E	DIM F
FC7223	KM15B	15	15	-	2.4	13	14.3
FC7225	K20B	20	17	1.5	4.2	18	16
FC7225B	K20B	20	17	-	4.2	18	16