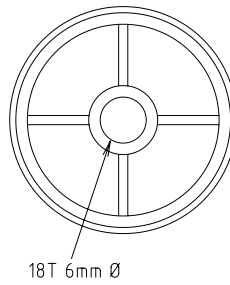
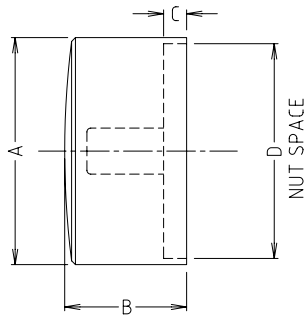
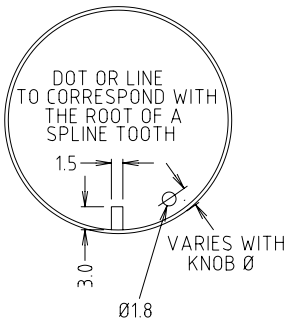


CLIFF

KNOBS



| P/No. | MODEL | DIM A | DIM B | DIM C | DIM D |
|--------|--------|-------|-------|-------|-------|
| FC7230 | KMR-15 | 14.8 | 15.6 | 2.2 | 13.0 |
| FC7231 | KMR-20 | 19.8 | 17.6 | 4.0 | 18.0 |
| FC7232 | KMR-25 | 24.8 | 18.4 | - | 23.1 |
| FC7233 | KMR-30 | 29.8 | 16.0 | 2.0 | 28.1 |
| FC7234 | KMR-35 | 35.0 | 18.5 | - | 33.1 |



FC7230
KMR-15 BLK MD 6MM SPL-18T



FC7231
KMR-20 BLK MD 6MM SPL-18T



FC7232
KMR-25 BLK MD 6MM SPL-18T



FC7233
KMR-30 BLK MD 6MM SPL-18T



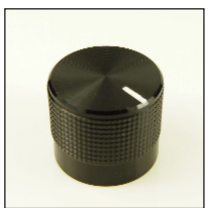
FC7234
KMR-35 BLK MD 6MM SPL-18T



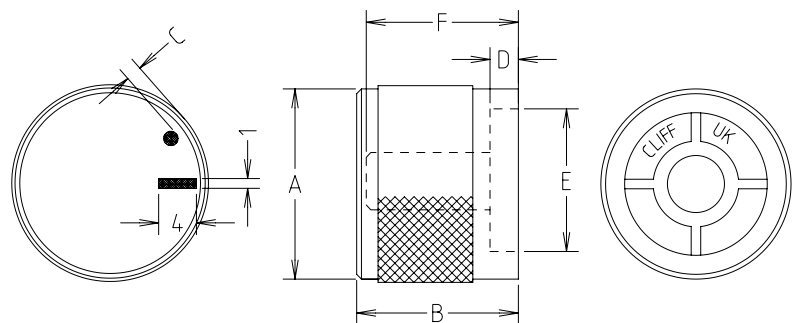
FC7223
KM15B ML 6MM SPL



FC7225
K20B MD 6MM SPL



FC7225B
K20B ML 6MM SPL



| P/No. | MODEL | DIM A | DIM B | DIM C | DIM D | DIM E | DIM F |
|---------|-------|-------|-------|-------|-------|-------|-------|
| FC7223 | KM15B | 15 | 15 | - | 2.4 | 13 | 14.3 |
| FC7225 | K20B | 20 | 17 | 1.5 | 4.2 | 18 | 16 |
| FC7225B | K20B | 20 | 17 | - | 4.2 | 18 | 16 |