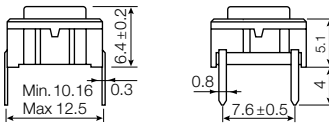


Technical Data:

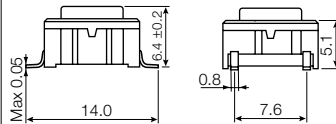
- through-hole or SMD
- 50mA/24VDC
- single pole/momentary
- 10.000.000 operations life time
- IP67 sealing
- temperature range:
low temp: -40/+115°C
high temp: -40/+160°C

STANDARD 3C

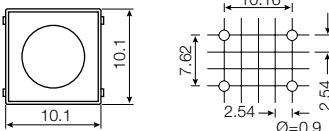
Dimensions (Through-hole)



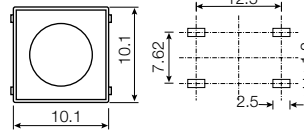
Dimensions (SMD)



PCB layout

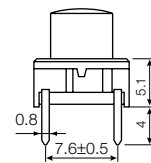
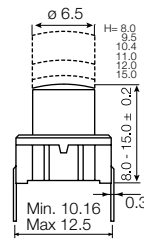


PCB layout

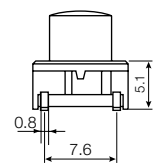
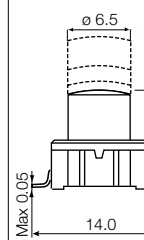


VARIABLE HEIGHTS 3E

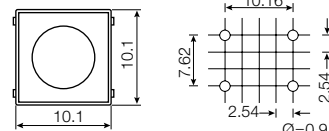
Dimensions (Through-hole)



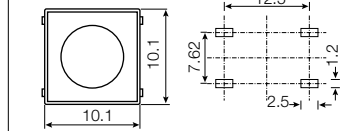
Dimensions (SMD)



PCB layout



PCB layout



HOW TO ORDER

3 C

Switch

Mounting

T through-hole

S surface mount

L 6 low temp. white

L 9 low temp. black

H 9 high temp.

Standard versions:

- 3CTL6
- 3CTL9
- 3CTH9
- 3CSH9
- 3CSH9R (tape/reel)

3 E

Switch

Mounting

T through-hole

S surface mount

L 9 low temp.

H 9 high temp.

Standard overall height

08.0

09.5

10.4

11.0

12.0

15.0

Standard versions:

- 3ETL9
- 3ETH9
- 3ESH9
- 3ESH9R

Custom heights:

3E is available in any height from 08.0 to 15.0 mm.
Min. order qty. for custom heights is 2.000 pcs. / A start-up charge will apply.

Ordering example: 3CTL6 and 3ETL9 - 09.5