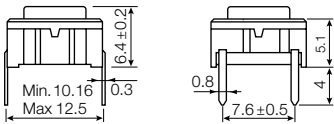


### Technical Data:

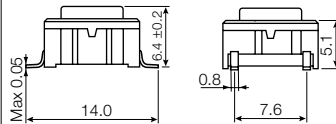
- through-hole or SMD
- 50mA/24VDC
- single pole/momentary
- 10.000.000 operations life time
- IP67 sealing
- temperature range:  
low temp: -40/+115°C  
high temp: -40/+160°C

### STANDARD 3C

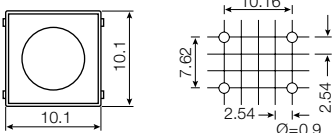
#### Dimensions (Through-hole)



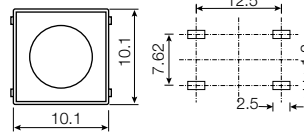
#### Dimensions (SMD)



#### PCB layout

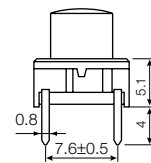
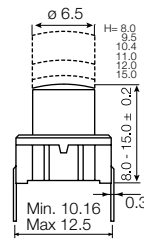


#### PCB layout

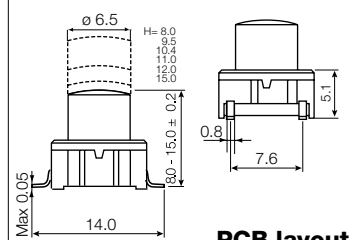


### VARIABLE HEIGHTS 3E

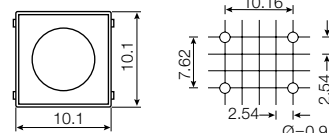
#### Dimensions (Through-hole)



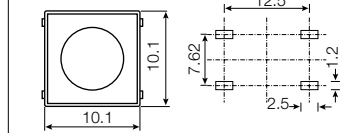
#### Dimensions (SMD)



#### PCB layout



#### PCB layout



### HOW TO ORDER

**3 C**

**Switch**

**Mounting**

**T** through-hole

**S** surface mount

**L 6** low temp. white

**L 9** low temp. black

**H 9** high temp.

#### Standard versions:

3CTL6  
3CTL9  
3CTH9  
3CSH9  
3CSH9R (tape/reel)

**3 E**

**Switch**

**Mounting**

**T** through-hole

**S** surface mount

**L 9** low temp.

**H 9** high temp.

**Standard overall height**

**08.0**

**09.5**

**10.4**

**11.0**

**12.0**

**15.0**

#### Standard versions:

3ETL9  
3ETH9  
3ESH9  
3ESH9R

#### Custom heights:

3E is available in any height from 08.0 to 15.0 mm.  
Min. order qty. for custom heights is 2.000 pcs. / A start-up charge will apply.

**Ordering example:** 3CTL6 and 3ETL9 - 09.5