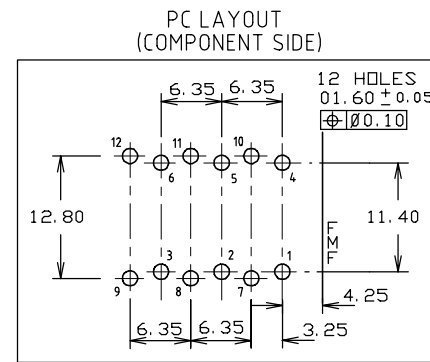
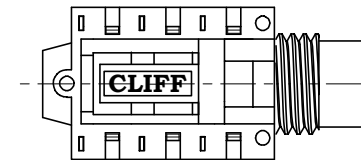
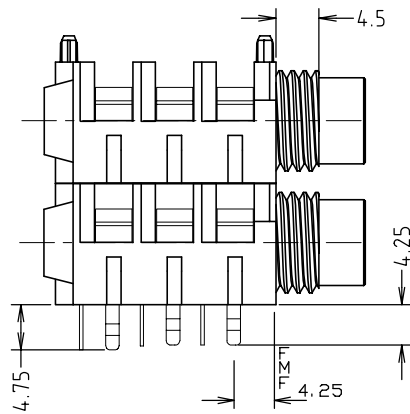
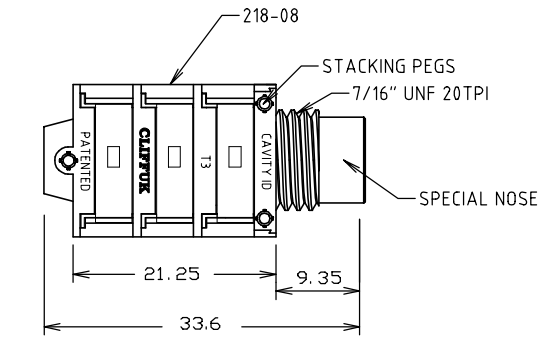
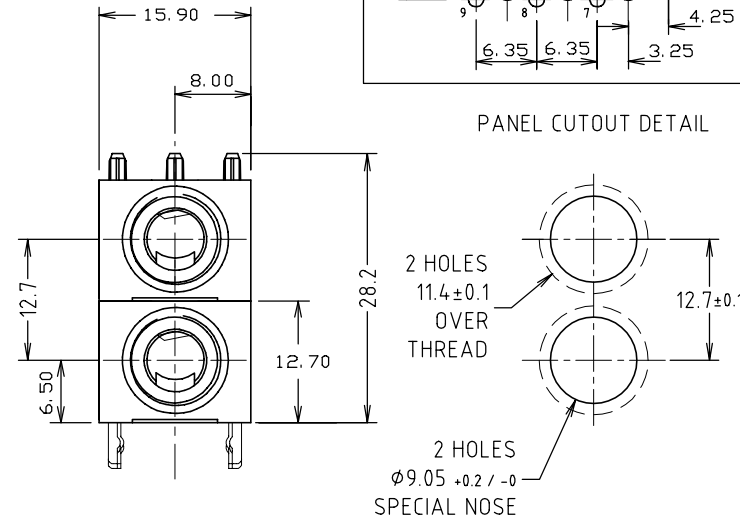


**NEW TOOL 4**

- 1) ADDITIONAL JACK PLUG SUPPORT
- 2) TYPE 2 CONTACTS
- 3) SPECIAL NOSE THREAD LENGTH 5.0mm
- 4) PATENT NUMBER WILL BE ON PACKAGING
- 5) CAVITY ID NEXT TO CLIFF LOGO.



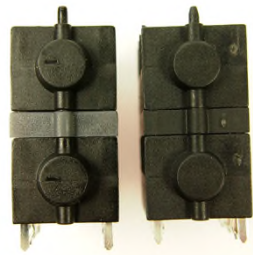
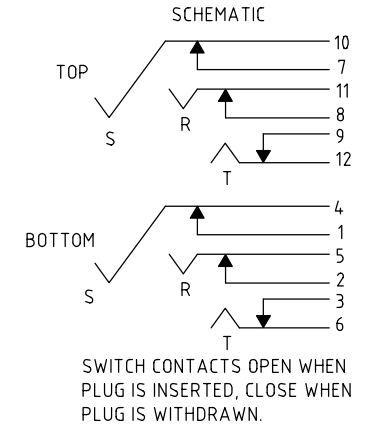
**PANEL CUTOUT DETAIL**



NOTE:  
 DUPLICATE TOOLING MAY BE USED FOR THIS JACK SOCKET.  
 TOOL 3 AS SHOWN, T3 ID ON MOULDINGS  
 TOOL 4 (NEW) - SEE IMAGES AND NOTES.  
 NO NUTS OR WASHERS ARE SUPPLIED WITH THIS MODEL.

IMAGES ARE OF FCR1126L - SPACER IS NOT USED ON FCR1117.

ISS.	AMEND	DATE
1	1st DRAWN	05/03/04
2	AMENDED	13/07/04
3	4th TOOL INFO ADD	21/02/13



**RoHS**  
 COMPLIANT

**TOLERANCE**  
 NO DEC. PLACE ± 1.00  
 1 DEC. PLACE ± 0.50  
 2 DEC. PLACE ± 0.10  
 HOLE Ø ± 0.10  
 ANGLES ± 1/2°  
 UNLESS OTHERWISE STATED

**Cliff Electronic Components Ltd.**

76 Holmetherpe Avenue, Holmetherpe Industrial Estate,  
 Redhill, Surrey, RH1 2PF, England, UK  
 Tel: 01737-771375 Fax: 01737-766012 Website: www.cliffuk.co.uk

THE CONTENTS OF THIS DOCUMENT MUST NOT BE COPIED OR DISCLOSED TO A 3rd PARTY WITHOUT WRITTEN PERMISSION OF CLIFF UK. © 2004

DIMENSIONS IN MILLIMETERS UNLESS OTHERWISE STATED. WORK TO DIMENSIONS. REMOVE ALL BURRS. IF IN DOUBT ASK.

3rd ANGLE PROJECTION:

DO NOT SCALE

MATERIAL: COMPOSITE

TITLE: JACK SOCKET S1C/S/BBB2/SPN/NNW

FINISH: CLEAN

DRWG. No. FCR1117

DRAWN: C.A.M.J.

APPROVED: R.W.T.

FORM: A4DRWGH