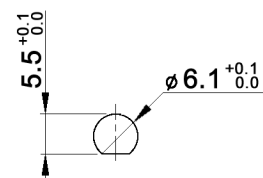


PANEL MOUNTING



Contact arrangement

code for x	function	actuator position/connected terminals	
D	On-On (alternating)	Pos.1: 1-2	Pos. 2: 2-3
F	Mom-On	Rest position: 1-2	Pressed down: 2-3

Specifications:

- Contact rating:** 3A, 250V AC / 6A, 125V AC
4A, 30V DC / 5A, 12V DC
6A, 6V DC
- Contact resistance:** 20mOhm max.
- Insulation resistance:** 1 000MOhm min. at 500V DC
- Dielectric strength:** 1 500V, 50Hz for the duration of 1 minute
- Operating temperature:** -45°C to +140°C
- Mechanical life:** min. 30 000 cycles
- Soldering conditions:** hand-soldering: max.: 420°C, 3sec., 60W
auto-soldering: max.: 270°C, 5sec.
- Mounting instruction:** max. torque: 49Ncm
- IP rating:** IP67
- Material:** Terminal / contact: brass, silver plated
Case: DAP
Housing: stainless steel, CNS9265
Bushing: copper alloy, C3604BD nickel plated
Actuator: copper alloy, C3604BD chrome plated
- Included accessories:** 1 pc. nut M6x0.75, nickel plated, 9mm wrench size
1 pc. tooth washer
1 pc. O-ring, silicone



Tolerances: 0.00: ±0.25mm 0.0: ±0.40mm	Date	Name
	06/09	dr
Dimension	01/11	dr
Modifications	Date	Name

MPE 106 x

30 18 47

knitter-switch

Page

1/1