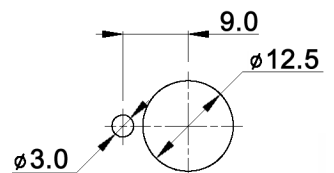


PANEL MOUNTING



CONTACT ARRANGEMENT

code for x	function	actuator position/connected terminals			
D	On-On (alternating)	Pos.1:	1-2	Pos. 2:	2-3
F	Mom-On	Rest position:	1-2	Pressed down:	2-3

Specifications:

- Contact rating:** 3A, 250V AC / 6A, 125V AC
 4A, 30V DC / 5A, 12V DC
 6A, 6V DC
Contact resistance: 20mOhm max.
Insulation resistance: 1 000MOhm min. at 500V DC
Dielectric strength: 1 500V, 50Hz for the duration of 1 minute
Operating temperature: -45°C to +140°C
Mechanical life: min. 30 000 cycles
Soldering conditions: hand-soldering: max.: 420°C, 3sec., 60W
 auto-soldering: max.: 270°C, 5sec.
Mounting instruction: max. torque: 137Ncm
Material: Terminal / contact: brass, silver plated
 Case: DAP
 Housing: stainless steel, CNS9265
 Bushing: copper alloy, C3604BD nickel plated
 Actuator: copper alloy, C3604BD chrome plated
Included accessories: 2 pcs. nut 15/32-32, nickel plated, 14mm wrench size
 1 pc. tooth washer
 1 pc. locking washer



Tolerances:	0.00: ±0.25mm	Date	Name
	0.0: ±0.40mm	07/09	dr
Dimension	01/11	dr	knitter-switch
Travel	02/10	dr	
Actuator dim	07/09	ok	
Modifications	Date	Name	

MPG 106 x

30 18 88

Page

1/1