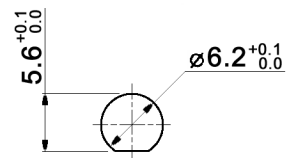


PANEL MOUNTING



CONTACT ARRANGEMENT

| code for x | function | toggle towards keyway | toggle opposite to keyway |
|------------|----------|-----------------------|---------------------------|
| D          | On-On    | 1-2                   | 2-3                       |
| F          | Mom-On   |                       |                           |

| code for x | function    | toggle towards keyway | toggle in center | toggle opposite to keyway |
|------------|-------------|-----------------------|------------------|---------------------------|
| E          | On-Off-On   | 1-2                   | open             | 2-3                       |
| G          | Mom-Off-Mom |                       |                  |                           |
| H          | Mom-Off-On  |                       |                  |                           |

Specifications:

- Contact rating:** 3A, 250V AC / 6A, 125V AC  
 4A, 30V DC / 5A, 12V DC  
 6A, 6V DC  
**Contact resistance:** 20mOhm max.  
**Insulation resistance:** 1 000MOhm min. at 500V DC  
**Dielectric strength:** 1 500V, 50Hz for the duration of 1 minute  
**Operating temperature:** -45°C to +140°C  
**Mechanical life:** min. 200 000 cycles  
**Soldering conditions:** hand-soldering: max.: 420°C, 3sec., 60W  
 auto-soldering: max.: 270°C, 5sec.  
**Mounting instruction:** max. torque: 49Ncm  
**Material:** Terminal: brass, C1020 silver plated  
 Case: DAP  
 Housing: stainless steel, CNS9265  
 Bushing: copper alloy, C3604BD nickel plated  
 Actuator: copper alloy, C3604BD chrome plated  
**Included accessories:** 1 pc. nut M6x0.75, nickel plated, 9mm wrench size  
 1 pc. tooth washer  
 1 pc. O-ring  
**Sealing:** IP 67



|                                           |       |       |                   |                    |
|-------------------------------------------|-------|-------|-------------------|--------------------|
| Tolerances: 0.00: ±0.25mm<br>0.0: ±0.40mm |       | Date  | Name              | <h1>MTE 106 x</h1> |
|                                           |       | 11/09 | dr                |                    |
|                                           |       |       |                   |                    |
|                                           |       |       |                   |                    |
| Dimension                                 | 01/11 | dr    | <h1>30 19 56</h1> | Page               |
| Sealing                                   | 12/10 | dr    |                   | 1/1                |
| Modifications                             | Date  | Name  |                   |                    |