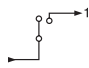
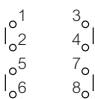


# Cam switches

 Characteristics (p. 203)

## ▶ ON-OFF SWITCH

No. of contacts	0	1		
1-2	X		1P	1
3-4	X		2P	2
5-6	X		3P	3
7-8	X		4P	4

### MINI CAM SWITCH - 10 A (AC21)

∅ 16 and 22 single hole front mounting

Cat. No.



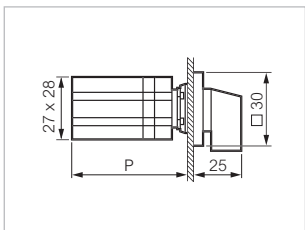
223501

□ 30 aluminium plate and frame

- 1P - 1 contact
- 2P - 2 contacts
- 3P - 3 contacts
- 4P - 4 contacts



- 223501**
- 223502**
- 223503**
- 223504**



**Dimensions in mm**  
 \*P: 50 (1-2 CONTACTS)  
 62 (3-4 CONTACTS)

### PR 12 - 16 A (AC21)

2-screw panel mount – interval: 30 mm

Cat. No.



NB02AQ1

#### Designation

Grey/black small handle  
 □ 48 aluminium plate and frame

- 1P - 1 contact
- 2P - 2 contacts
- 3P - 3 contacts
- 4P - 4 contacts



- PR12 1101 A4 E Q48PN
- PR12 1102 A4 E Q48PN
- PR12 1103 A4 E Q48PN
- PR12 1104 A4 E Q48PN

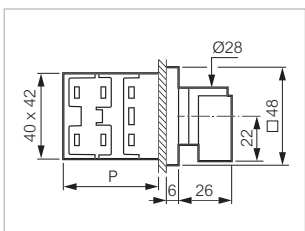
- NB01AQ1**
- NB02AQ1**
- NB03AQ1**
- NB04AQ1**

- 1P - 1 contact
- 2P - 2 contacts
- 3P - 3 contacts



- PR12 1101 A8 E Q48PN
- PR12 1102 A8 E Q48PN
- PR12 1103 A8 E Q48PN

- NB01EQ1**
- NB02EQ1**
- NB03EQ1**



**Dimensions in mm**  
 \*P: 36 (1-2 CONTACTS)  
 46 (3-4 CONTACTS)

\*P = Depth