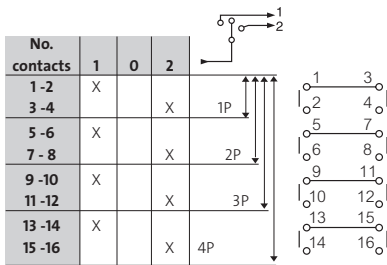


Cam switches

 Characteristics (p. 203)

► CHANGE-OVER SWITCH WITH "OFF" POSITION



MINI CAM SWITCH - 10 A (AC21)

∅ 16 and ∅ 22 mm single hole front mounting

Cat. No.



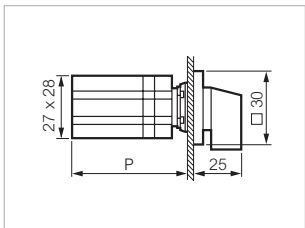
223505

30 aluminium plate and frame

- 1P - 2 contacts
- 2P - 4 contacts
- 3P - 6 contacts
- 4P - 8 contacts



223505
223506
223507
223508



Dimensions in mm

- *P: 50 (1-2 CONTACTS)
- 62 (3-4 CONTACTS)
- 74 (5-6 CONTACTS)
- 96 (7-8 CONTACTS)

PR 12 - 16 A (AC21)

2-screw panel mount – interval: 30 mm

Cat. No.



NC02GQ1

Designation

Grey/black small handle
 48 aluminium plate and frame

- 1P - 2 contacts
- 2P - 4 contacts
- 3P - 6 contacts
- 4P - 8 contacts



PR12 2201 C8 E Q48PN
PR12 2202 C8 E Q48PN
PR12 2203 C8 E Q48PN
PR12 2204 C8 E Q48PN

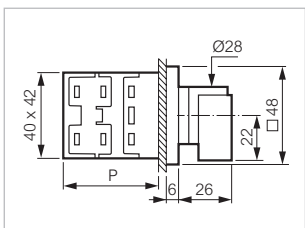
NC01GQ1
NC02GQ1
NC03GQ1
NC04GQ1

- 1P - 2 contacts
- 2P - 4 contacts
- 3P - 6 contacts



PR12 2201 C4 E Q48PN
PR12 2202 C4 E Q48PN
PR12 2203 C4 E Q48PN

NC01CQ1
NC02CQ1
NC03CQ1



Dimensions in mm

- *P: 36 (1-2 CONTACTS)
- 46 (3-4 CONTACTS)
- 56 (5-6 CONTACTS)
- 66 (7-8 CONTACTS)

*P = Depth

Catalogue No. in bold: normally in stock at distribution outlets