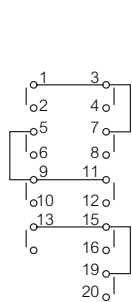


Cam switches

 Characteristics (p. 203)

▶ 3-WAY SWITCHES WITH "OFF" POSITION

No. of contacts	0	1	2	3	
1-2		X			1P
3-4			X		
7-8				X	2P
5-6			X	X	
9-10			X		3P
11-12		X			
13-14		X			
15-16			X		
19-20				X	



MINI CAM SWITCH - 10 A (AC21)

Ø 16 or 22 single hole front mounting

Cat. No.



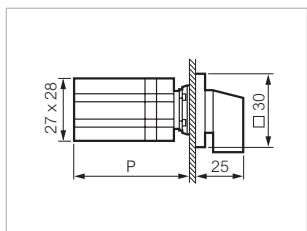
223522

30 aluminium plate and frame

1P -3 contacts
2P -6 contacts
3P -9 contacts



223521
223522
223523



Dimensions in mm

*P: 62 (3 CONTACTS)
74 (6 CONTACTS)
95 (9 CONTACTS)

*P = Depth

Catalogue No. in bold: normally in stock at distribution outlets