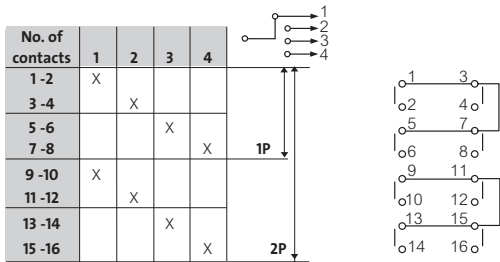


Cam switches

 Characteristics (p. 203)

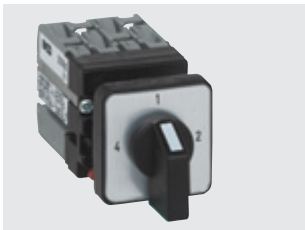
► 4-WAY CAM SWITCHES WITHOUT “OFF” POSITION



MINI CAM SWITCH - 10 A (AC21)

∅ 16 or 22 single hole front mounting

Cat. No.



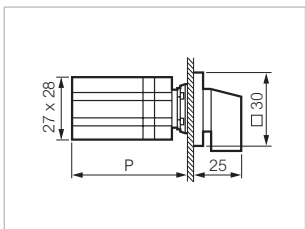
223525

30 aluminium plate and frame

1P -4 contacts
2P -8 contacts



223525
223526



Dimensions in mm

*P: 62 (4 CONTACTS)
86 (8 CONTACTS)

*P = Depth