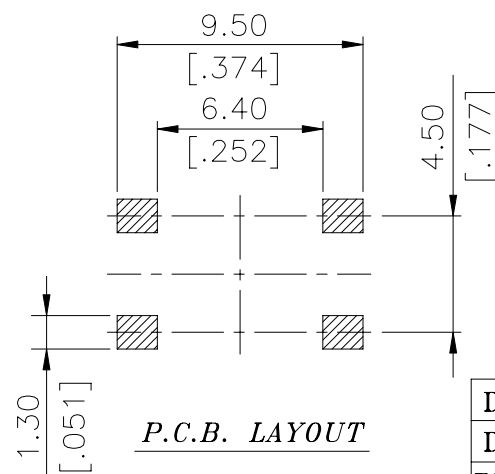
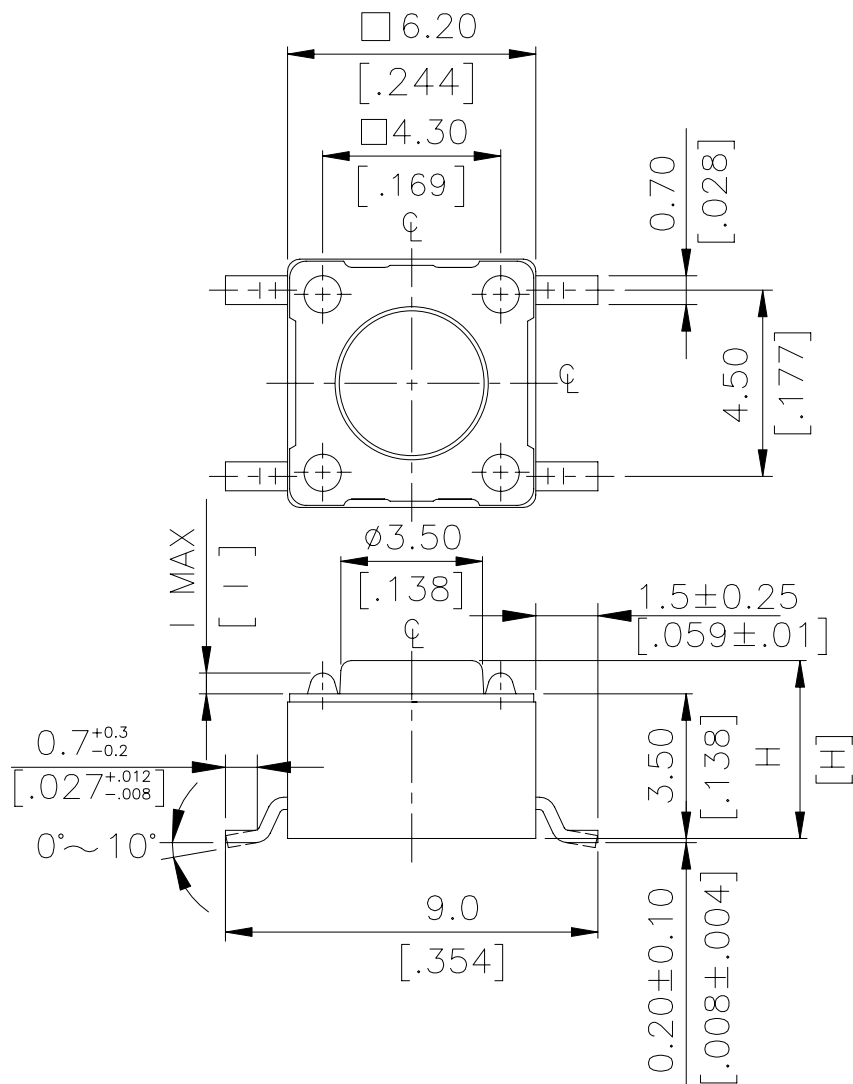
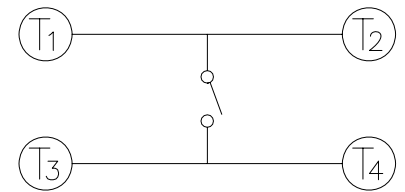


DIMENSIONS

DTSM-6



P.C.B. LAYOUT



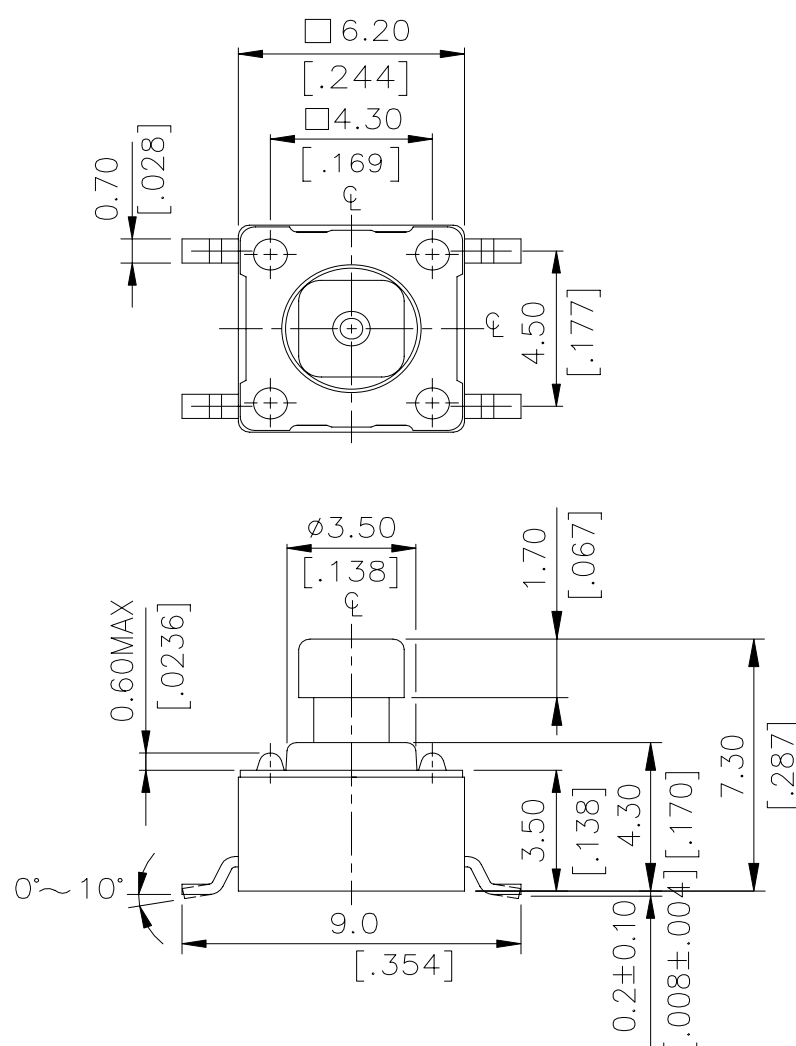
CIRCUIT DIAGRAM

DTSM- 62~66□	0.6 MAX	.0236MAX
DTSM- 6 1 □	0.5 MAX	.0197MAX
PROD. NO.	I	INCHES.

DTSM-6 6□	13.0 [.512]
DTSM-6 5□	9.5 [.374]
DTSM-6 3□	7.0 [.275]
DTSM-6 2□	5.0 [.197]
DTSM-6 1□	4.3 [.169]
PROD.	NO. H

General Tolerance : $\pm 0.2\text{mm}$

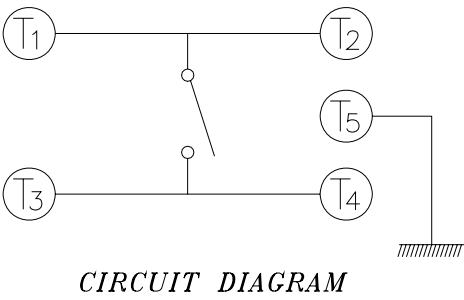
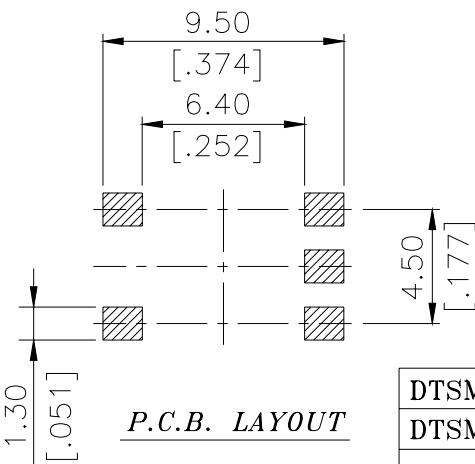
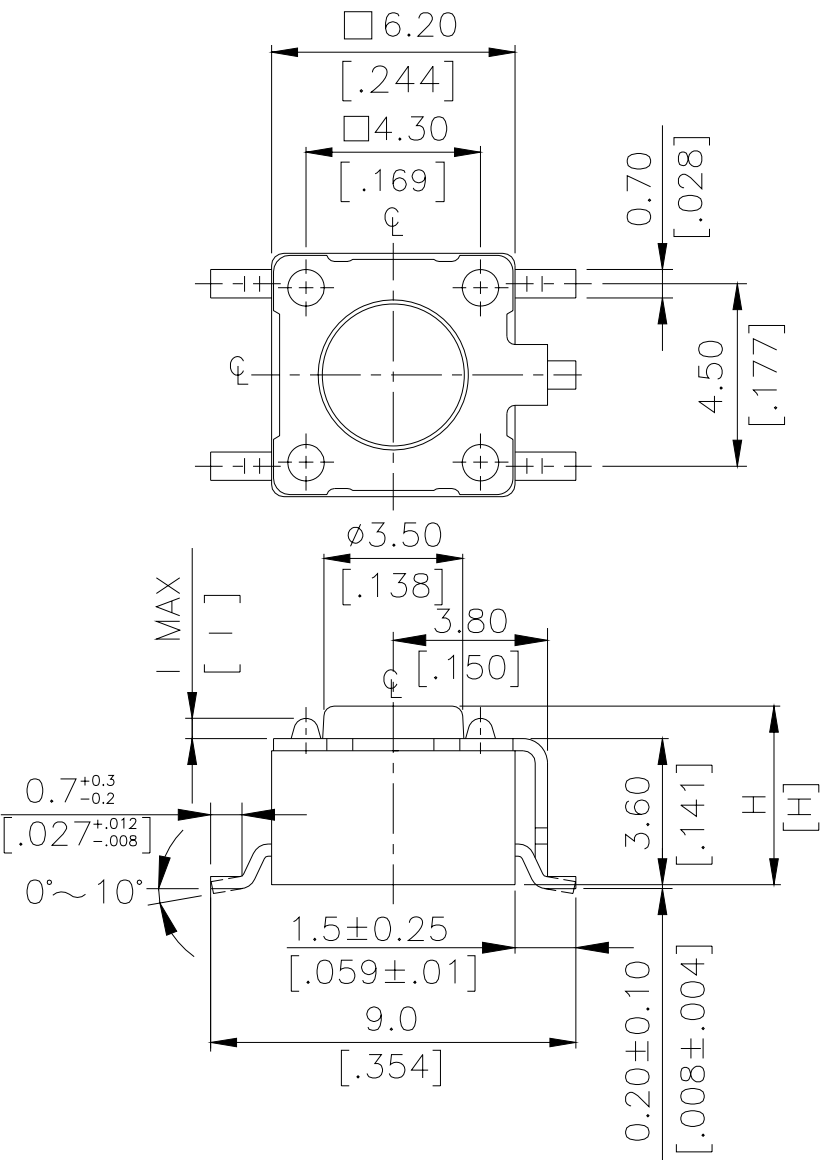
DTSM-64



DTSM-644	<input type="checkbox"/>	<input type="checkbox"/> A	2.4	[.095]
		<input type="checkbox"/> B	1.6	[.063]
DTSM-648	<input type="checkbox"/>	<input type="checkbox"/> A	2.8	[.110]
		<input type="checkbox"/> B	2.0	[.079]
PROD.	NO.	LOC.	MM.	INCH.

General Tolerance : $\pm 0.2\text{mm}$

DTSMG-6

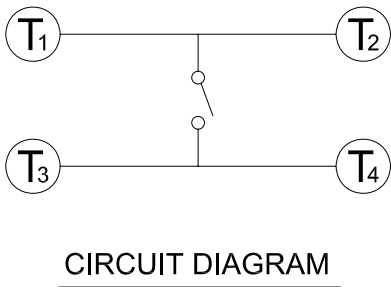
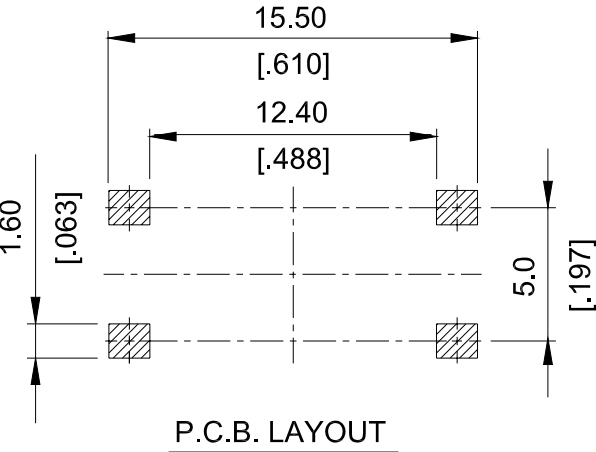
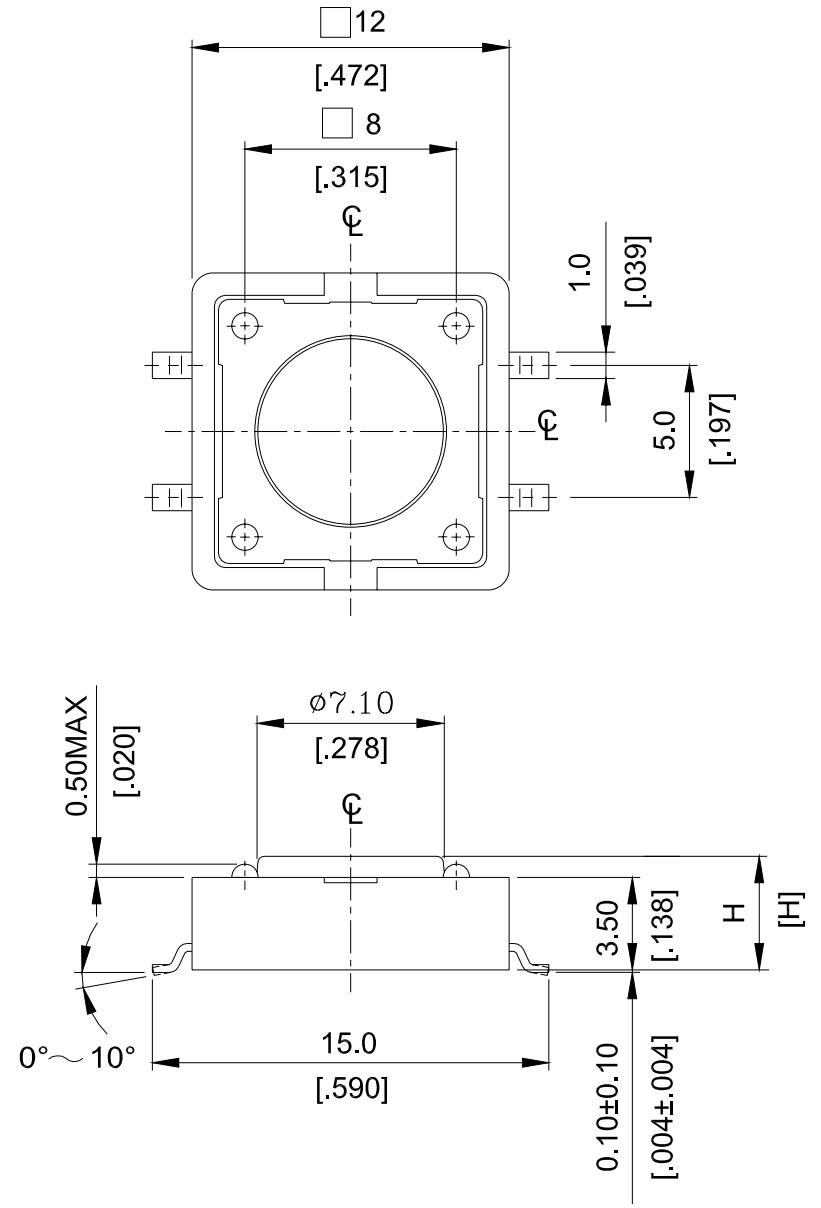


DTSMG-62~66□-V	0.5 MAX	.02MAX
DTSMG-61□-V	0.4 MAX	.016MAX
PROD. NO.	I	INCHES.

DTSMG- 6 6□ -V	13.0 [0.512]
DTSMG- 6 5□ -V	9.5 [0.374]
DTSMG- 6 3□ -V	7.0 [0.275]
DTSMG- 6 2□ -V	5.0 [0.197]
DTSMG- 6 1□ -V	4.3 [0.169]
PROD. NO.	H

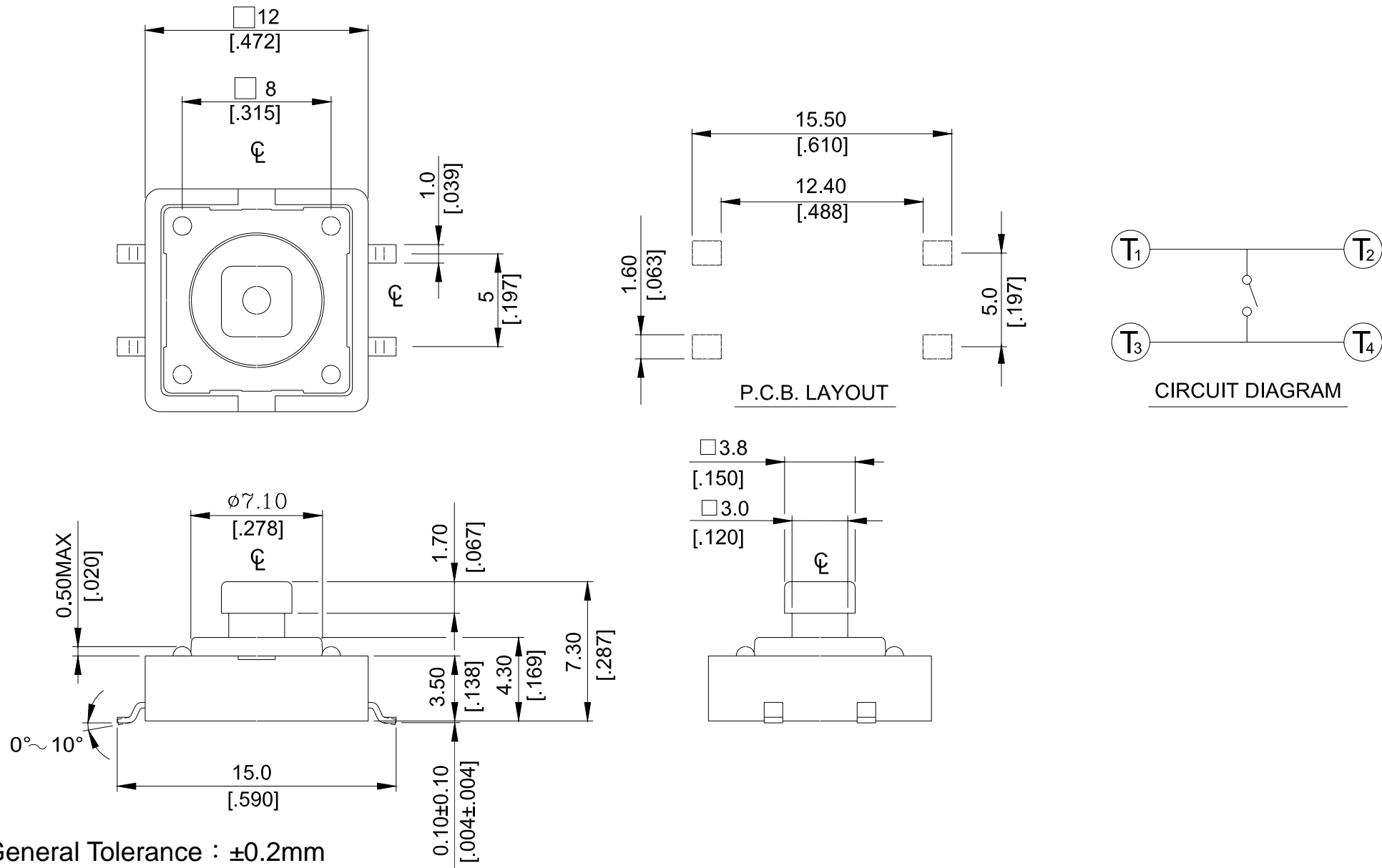
General Tolerance : ±0.2mm

DTSM-2



DTSM-25	8.5 [0.335]
DTSM-21	4.6 [0.169]
PARO NO	H

General Tolerance : ±0.2mm



HOW TO ORDER

DTSM ☐ - ☐ ☐ ☐ - ☐ - ☐ ☐ ☐

(230)=Total H:5.21mm,Pitch 10mm
(221)=Pitch 10mm
(231)=Total H:6.0mm
(213)=Total H:5.21mm

Package style:
☐=Tube
☐T/R=Tape & Reel
<(Except DTSM-66)>

Soldering:
V=Lead Free Solderable

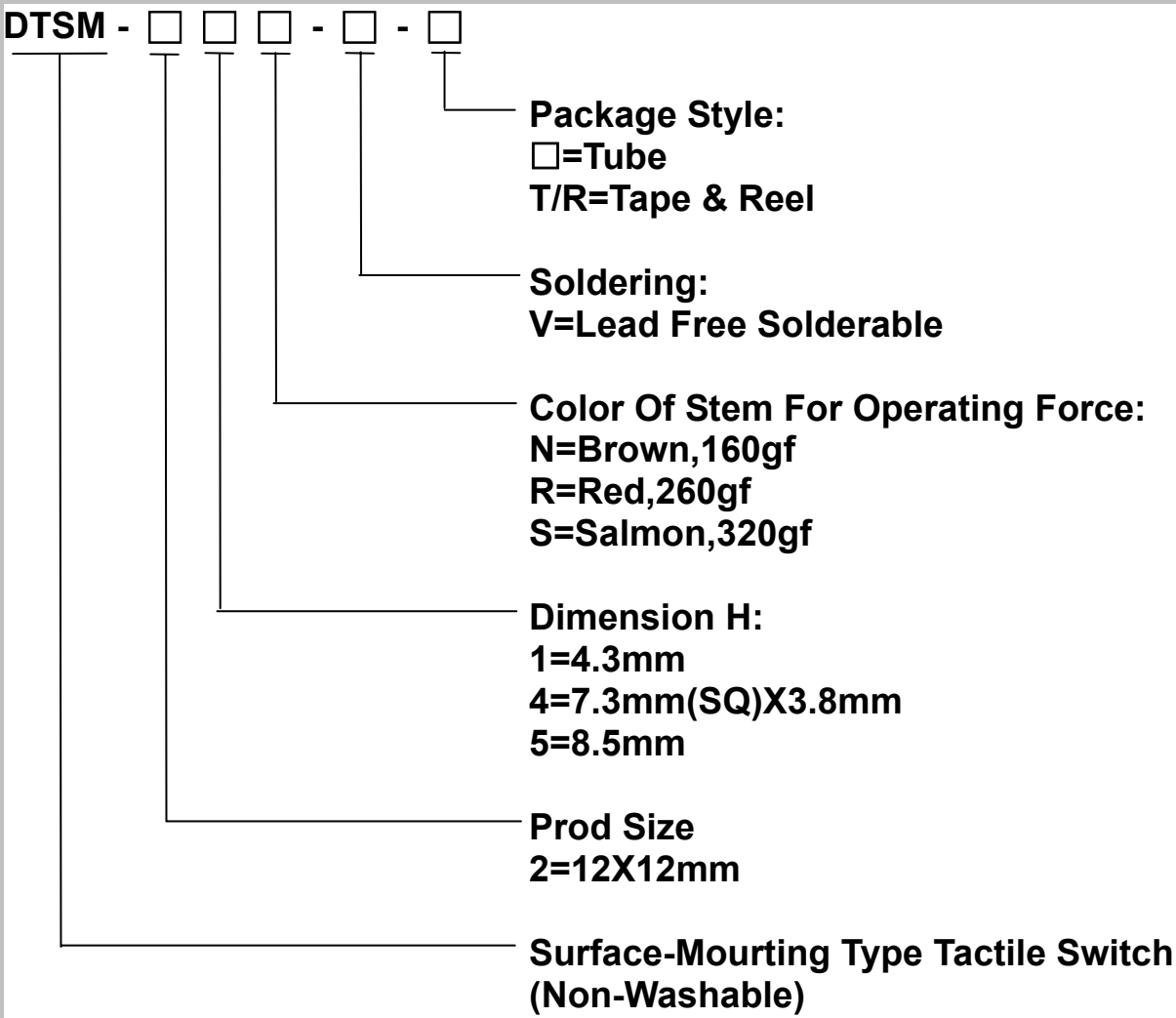
Color Of Stem For Operating Force:
K=Black,100gf
N=Brown,160gf
R=Red,260gf
S=Salmon,320gf
Y=Yellow,520gf

Dimension H:
1=4.3mm
2=5.0mm
3=7.0mm
44=7.3mm(SQ)X2.4mm
48=7.3mm(SQ)X2.8mm
5=9.5mm
6=13mm

Prod Size
6=6X6mm

☐=Without Ground Terminal
G=S.M.T & Ground Terminal

Surface-Mourting Type Tactile Switch
(Non-Washable)



SPECIFICATION

△MECHANICAL

520 ± 130gf Yellow (Y)
320 ± 80gf Salmon (S)
Operation Force: 260 ± 50gf Red (R)
160 ± 50gf Brown (N)
100 ± 50gf Black (K)

Stroke: (6x6) 0.25 +0.2mm / -0.1mm
(12X12) 0.35 ±0.1mm

Operation Temperature: -25℃ to +70℃
Storage Temperature: -30℃ to +80℃

△ELECTRICAL

Electrical Life: 100,000 cycles for 320gf, 520gf
100,000 cycles for 260gf
200,000 cycles for 100gf, 160gf

Rating: 50mA , 12VDC
Contact Resistance: 100mΩ max.
Insulation Resistance: 100MΩ min. at 500VDC
Dielectric Strength: 250VAC/ minute
Contact Arrangement: SPST

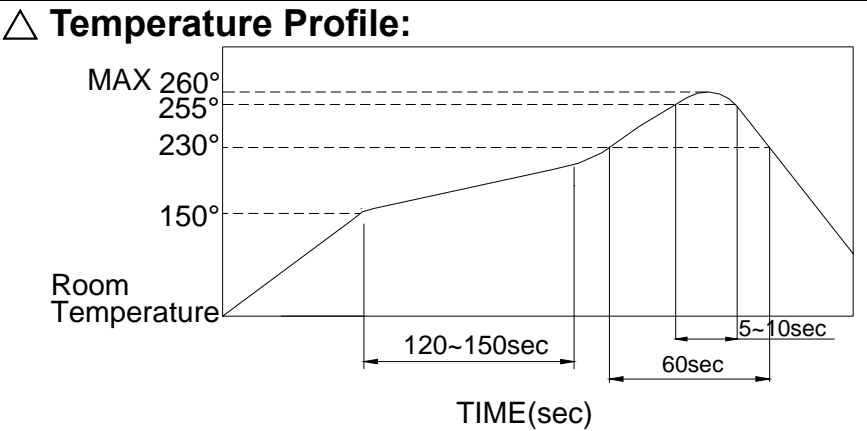
MATERIALS

△COVER: Steel, Tin plated
△BASE: UL94V-0 Nylon Thermoplastic
Color: Black
△STEM: UL94V-0 Nylon Thermoplastic
Color: Black (100gf), Brown (160gf)
Red (260gf), Salmon (320gf)
Yellow (520gf)
△CONTACT DISC: Phosphor Bronze with silver cladding
△TERMINAL: Brass with silver plated

SOLDERING PROCESS

△HAND SOLDERING : Use a soldering iron of 30 watts, controlled at 350℃ approximately 5 seconds while applying solder.

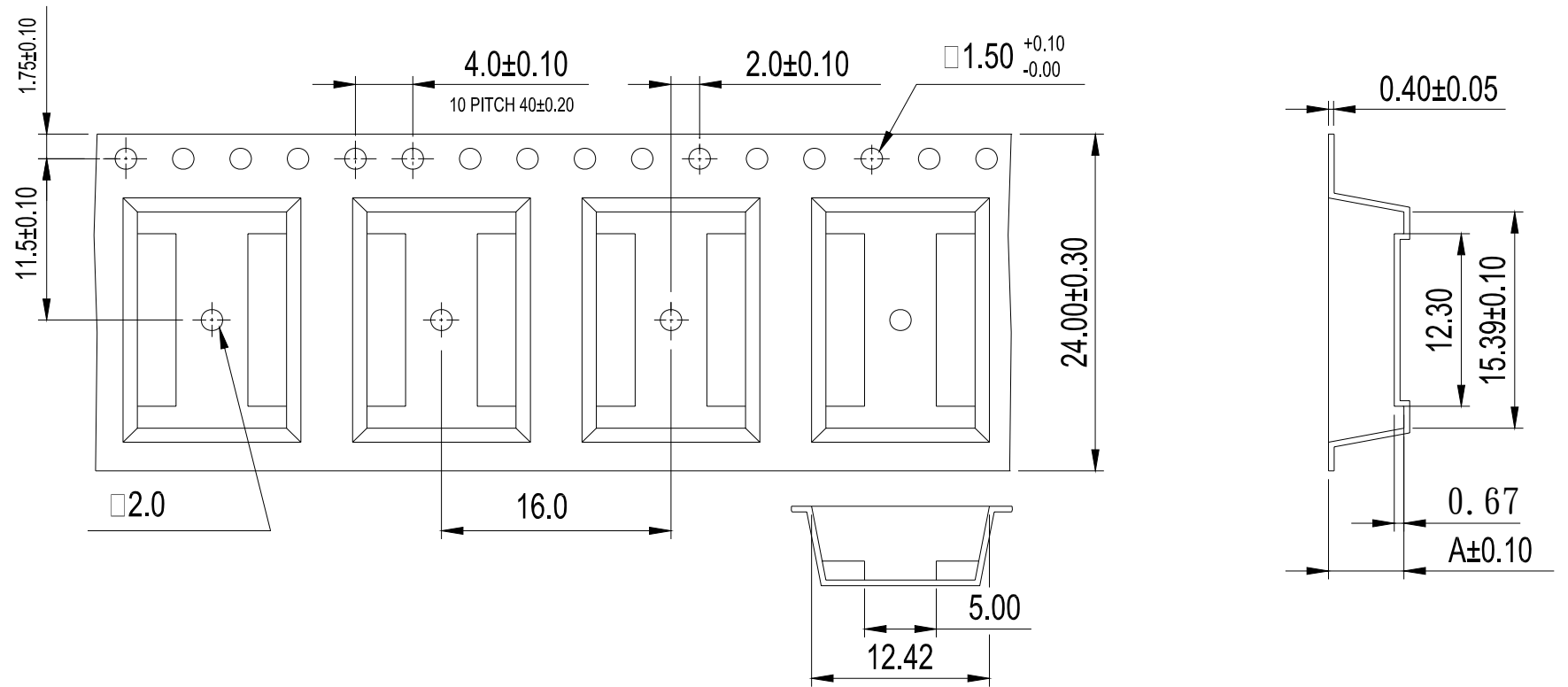
△REFLOW SOLDERING : When applying reflow soldering, the peak temperature or the reflow oven should be set to 260℃ max.



PACKING

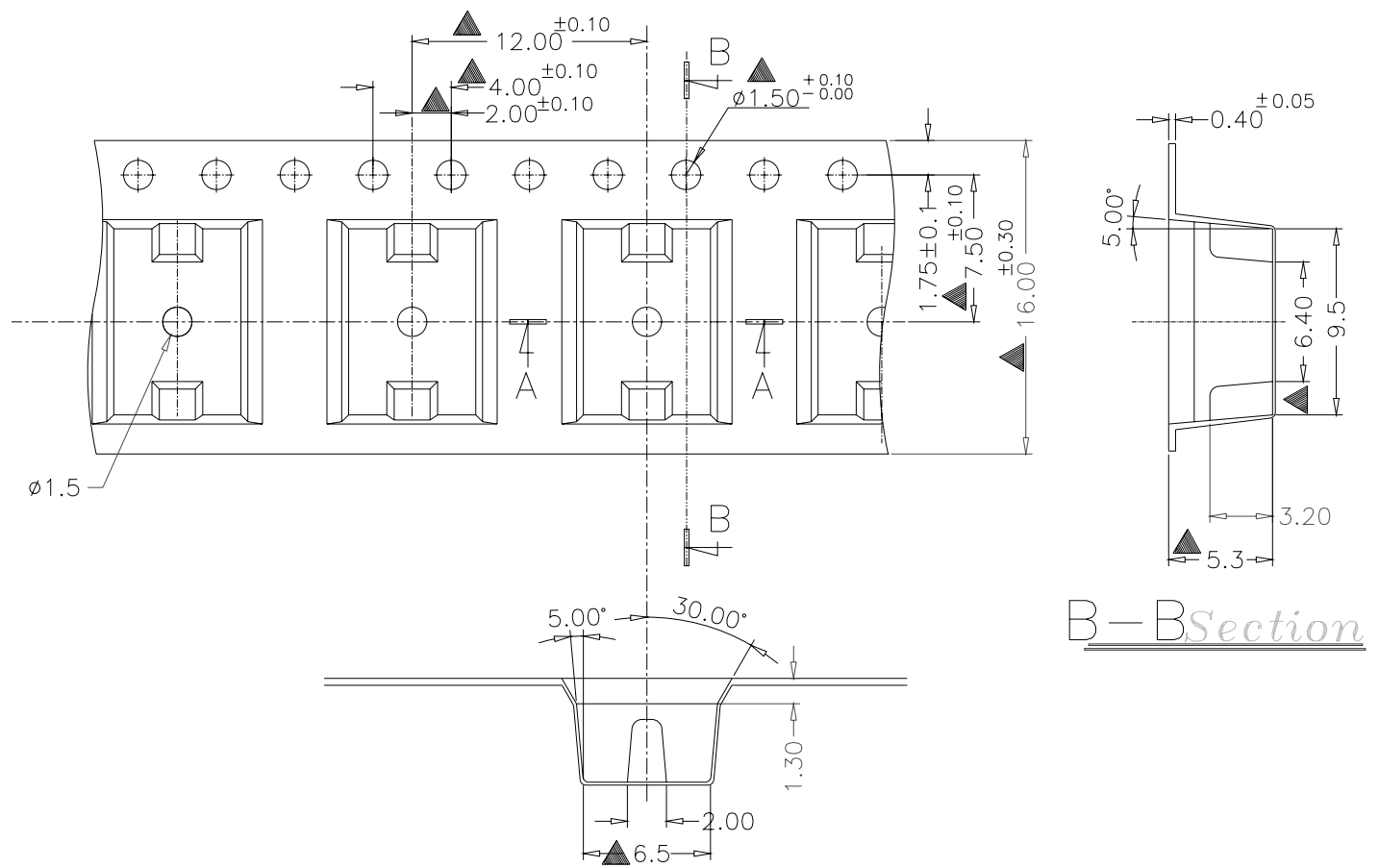
Part Number	Number Per Tube	Number Per Reel
DTSM-61	77	1000
DTSM-62	77	900
DTSM-63	77	700
DTSM-64	77	500
DTSM-65	77	380
DTSM-66	77	-
DTSM-21	40	700
DTSM-24	40	500
DTSM-25	40	400

DTSM-2 Reel



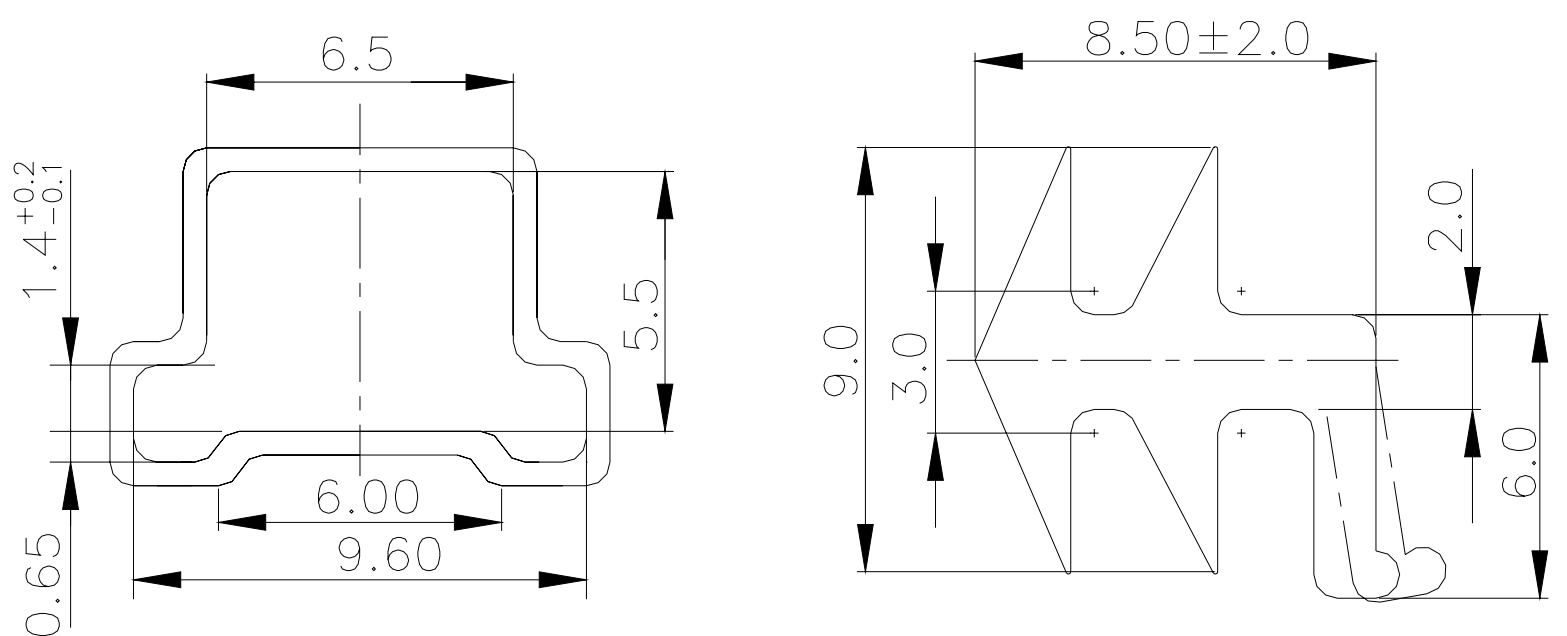
General Tolerance : $\pm 0.1\text{mm}$

DTSM-61.62 Reel



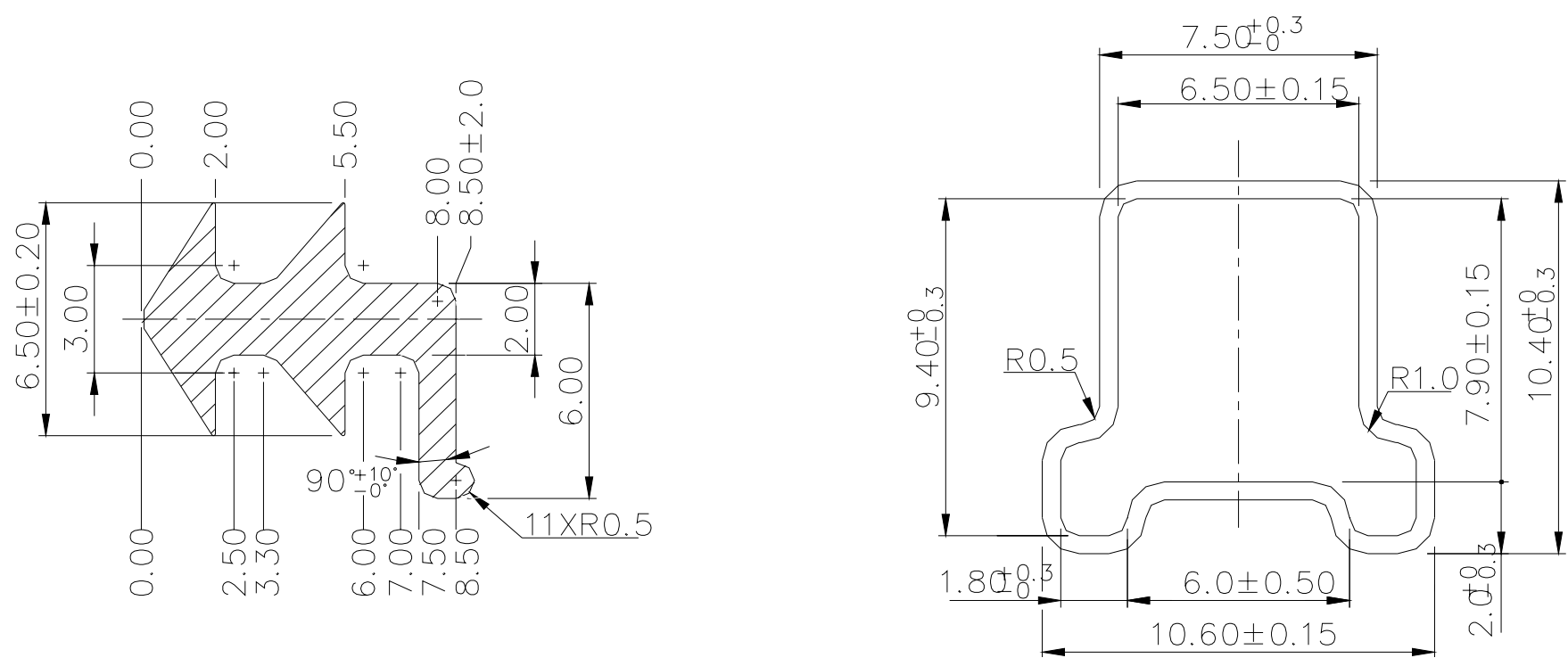
General Tolerance : $\pm 0.1\text{mm}$

DTSM-61.62 Tube



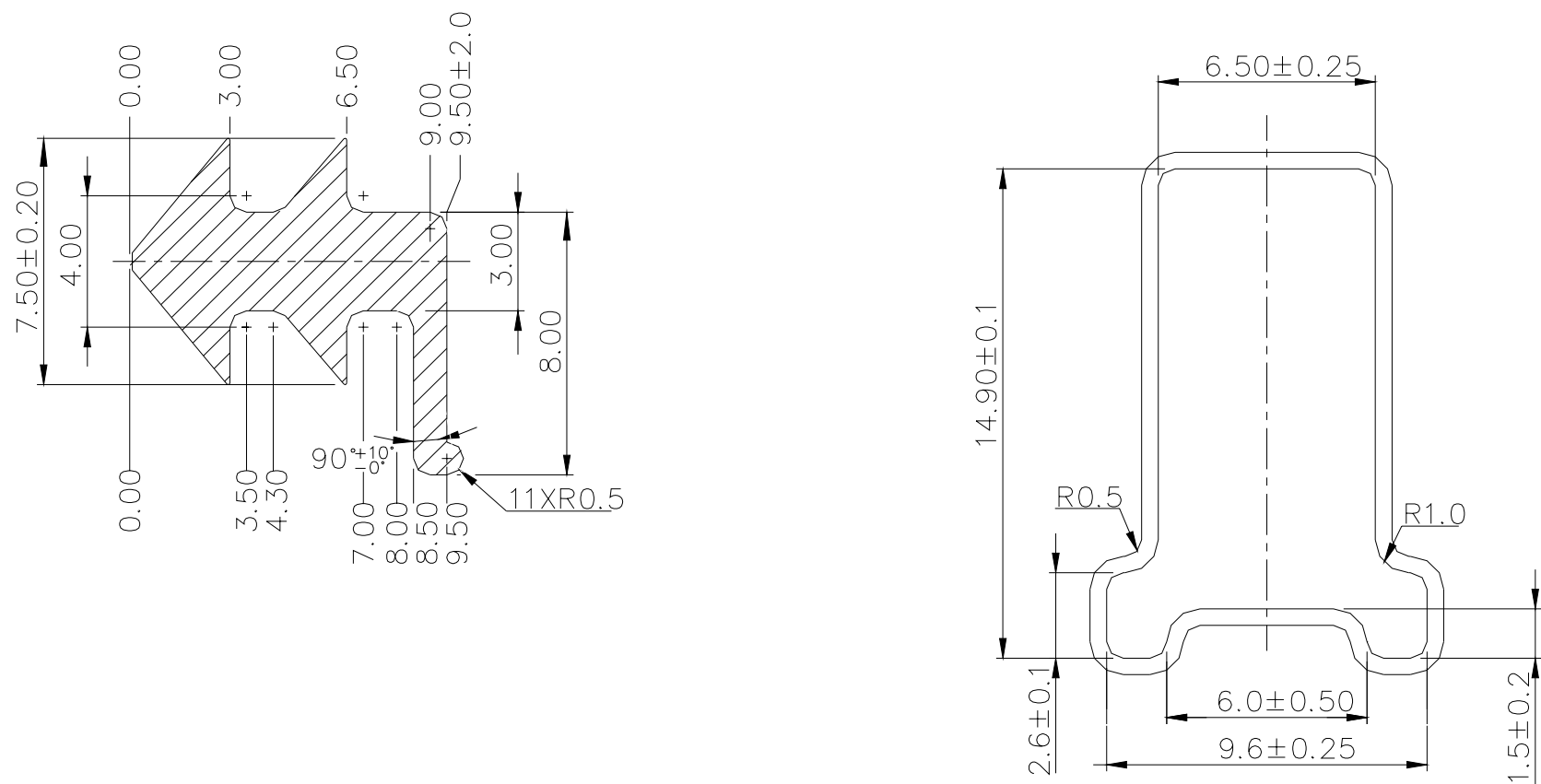
General Tolerance : $\pm 0.1\text{mm}$

DTSM-63.644(8) Tube



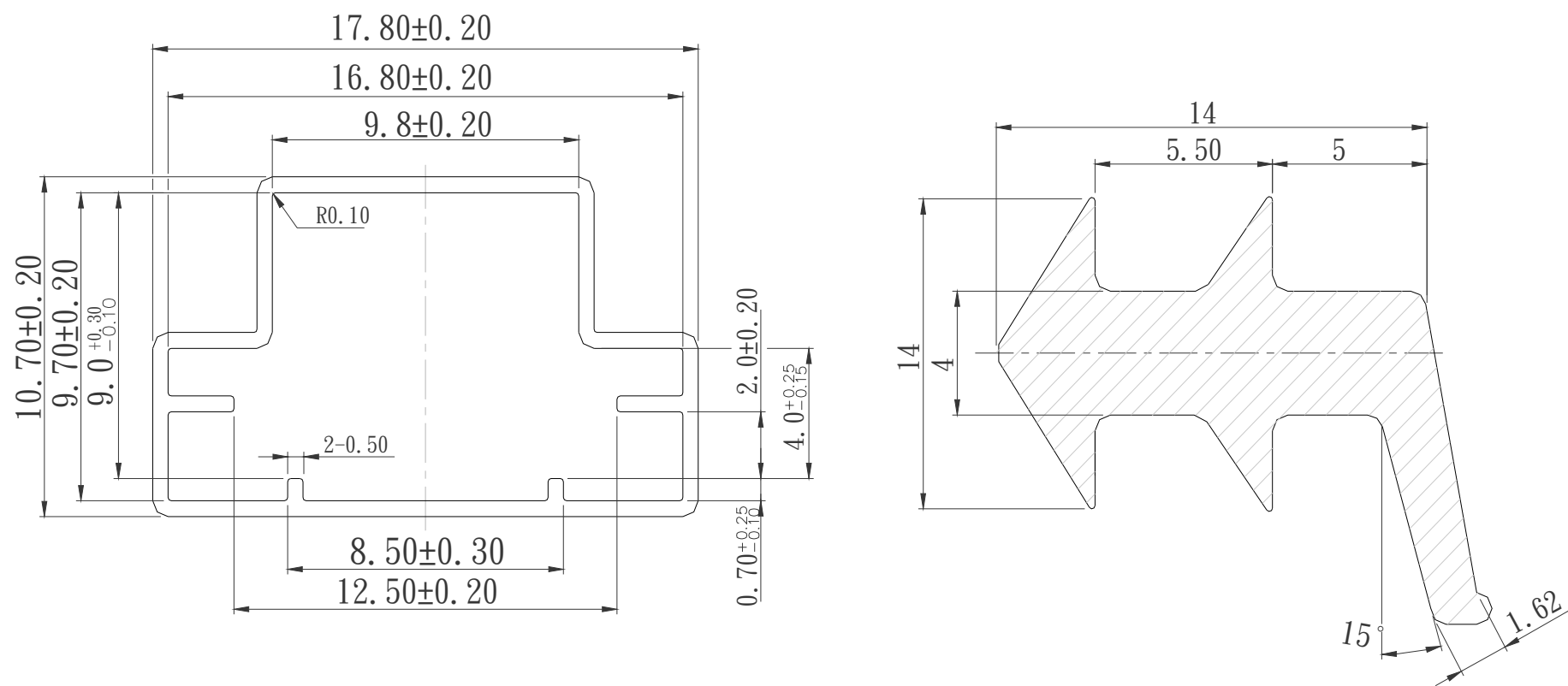
General Tolerance : ±0.1mm

DTSM-65.66 TUBE



General Tolerance : ±0.1mm

DTSM-2 TUBE



General Tolerance : ±0.1mm

DTSM-64 Reel



Ao	6.50 ± 0.10
Bo	10.00 ± 0.10
Ko	7.60 ± 0.10
K1	4.90 ± 0.10

DTSM-65 Reel



DTSMG-61.62 Reel

