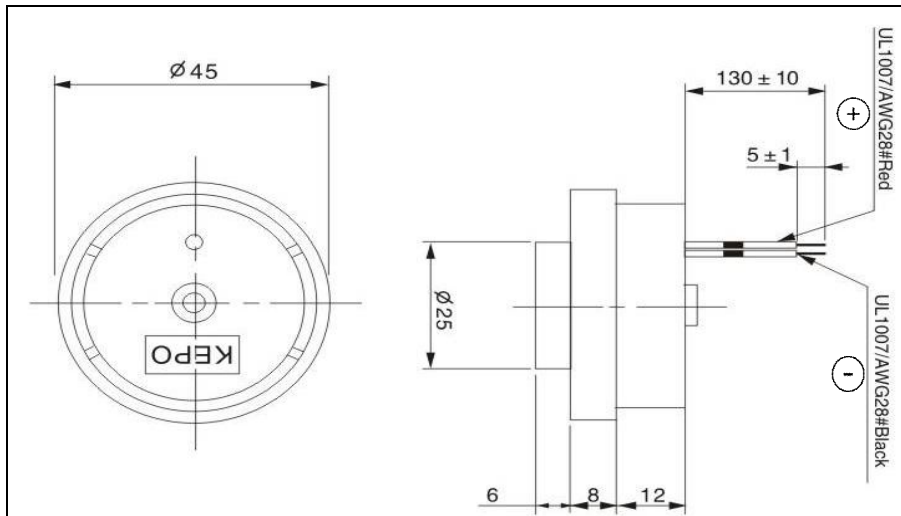


# Technical datasheet: KPI-G4511L-K6312

## Specifications:

Operating Temperature	-20°C to +60°C
Storage Temperature	-30°C to +70°C
Rated Voltage	12VDC
Operating Voltage	3VDC to 16VDC
Max. Rated Current	20mA at 12VDC
Resonant Frequency	3.2kHz ±0.5kHz
Min SPL	92dB / 12VDC / 30cm
Weight	21g
Case Material/Color	ABS/White
Tone Nature	Slow Pulse

## Dimensions:



## Frequency Response:

