



## Emergency stop and safety gate monitoring

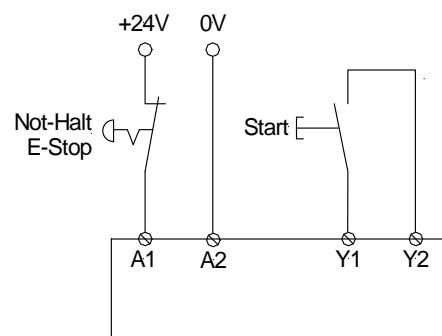
Printing 11.03.2016

→ <b>DEVICE</b>	<b>SAFE 1 / SAFE 1.1</b>
→ APPLICATIONS	Emergency stop and safety gate monitoring relay
→ APPROVALS	CE, TÜV, UL, C-UL
→ CONTACTS	3 normally open safety, 1 normally auxiliary closed LED indicators for status and supply diagnostic
→ SPECIAL CHARACTERISTICS	With (SAFE 1.1) and without (SAFE 1) start control
→ LED	Power, channel 1 and channel 2
→ OPERATING VOLTAGE	24 V AC / DC (electronic fuse)
→ POWER CONSUMPTION	ca. 2,5 VA / 2,5 W
→ START UP DELAY / FALLBACK TIME	<50 ms / <100 ms
→ CONTACT CAPACITY max.	5 A, 250 V AC, 24 V DC
→ CONTACT CAPACITY min. at 24 V DC (*)	1 mA
→ SIMULTANEITY	
→ ENVIRONMENTAL TEMPERATURE	-25°C to + 55°C
→ SWITCHING CAPACITY	1250 VA (resistive load)
→ CONTACT SECURITY	6,3 A quick acting or 4 A time lag

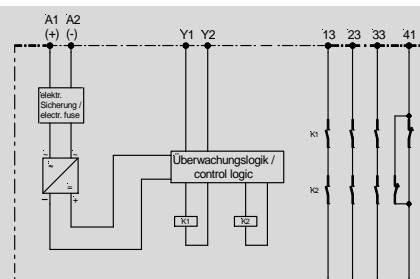
→ **OPERATING MODE**  
 (\*) We offer all devices who have a CONTACT CAPACITY of min. 100 mA at 24 V DC with hard gold-plated contacts. In this way the CONTACT CAPACITY of min. 100 mA is only 4 mA. Please ask our sales team!

A supply voltage must be applied via emergency stop button to terminals A1 and A2. Power LED illuminates if the emergency stop is closed. To start the unit terminals Y2 and Y1 must be bridged with a normally open contact. The unit works if you close this contact. At this time the contacts 13-14, 23-24 and 33-34 are closed, contact 41-42 is opened. The LEDs channel 1 and channel 2 illuminate. In series to this start button an external contactor can be monitored.

→ **CONNECTION DIAGRAM**



→ **FUNCTION CIRCUIT DIAGRAM**



→ **Certifications according to Safety relevant substance data**  
 Depending on wiring (only max. achievable values are given)

EN ISO 13849-1: PLd, Cat. 3 (\*\*see product-navigator page 4)  
 MTTFd: 37,57 years / high, DC: 90% / medium,  
 CCF: achieved