

# D-SUB combination contact insert - VS-15-BU-DSUB-2P-5S-LH - 1655344

Please be informed that the data shown in this PDF Document is generated from our Online Catalog. Please find the complete data in the user's documentation. Our General Terms of Use for Downloads are valid (<http://download.phoenixcontact.com>)



D-SUB contact insert, shell size 2, with 5 signal contacts, for PCB assembly, angled, accommodation for 2 combined contacts, contact type socket, fixing with M3 thread and solder pins, for panel mounting frame VS-15-...

## Key commercial data

<b>package_quantity</b>	10
<b>GTIN</b>	4046356029285

## Technical data

### Mechanical characteristics

<b>Number of positions</b>	7
<b>Connection profile</b>	D-SUB 15
<b>Insertion/withdrawal cycles</b>	≥ 200
<b>Connection method</b>	Solder connection
<b>Insertion force per signal contact</b>	≤ 3.40 N
<b>Extraction force per signal contact</b>	≥ 0.2 N

### Ambient conditions

<b>Ambient temperature (operation)</b>	-55 °C ... 125 °C
--	-------------------

### Material data

<b>Inflammability class according to UL 94</b>	V0
<b>Housing material</b>	Steel, yellow chromated
<b>Contact carrier material</b>	PBTP
<b>Contact material</b>	Copper alloy
<b>Contact surface material</b>	Gold over nickel

### Electrical characteristics

<b>Rated voltage (III/3)</b>	250 V
<b>Rated current</b>	5 A
<b>Contact resistance per contact pair</b>	≤ 2.7 mΩ
<b>Insulation resistance</b>	≥ 5 GΩ

# D-SUB combination contact insert - VS-15-BU-DSUB-2P-5S-LH - 1655344

## classifications

### eCl@ss

eCl@ss 4.0	27140816
eCl@ss 4.1	27260701
eCl@ss 5.0	27260701
eCl@ss 5.1	27260701
eCl@ss 6.0	27260705
eCl@ss 7.0	27440309
eCl@ss 8.0	27440309

### ETIM

ETIM 2.0	EC000438
ETIM 3.0	EC000438
ETIM 4.0	EC000438
ETIM 5.0	EC000438

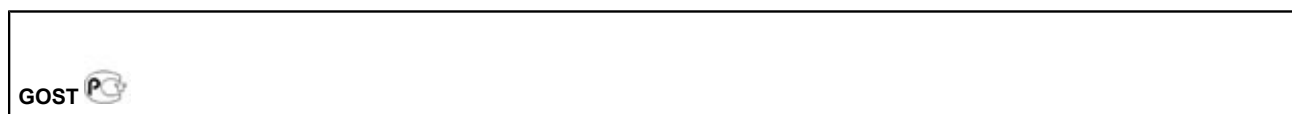
### UNSPSC

UNSPSC 6.01	30211923
UNSPSC 7.0901	39121522
UNSPSC 11	39121522
UNSPSC 12.01	39121522
UNSPSC 13.2	39121522

## approvals

GOST /

### Approval details



## accessories

### Solder contact

VS-BU-LH-3,6/18/3,8 - 1655454



# D-SUB combination contact insert - VS-15-BU-DSUB-2P-5S-LH - 1655344

accessories

VS-BU-KX-50-LP - 1655519

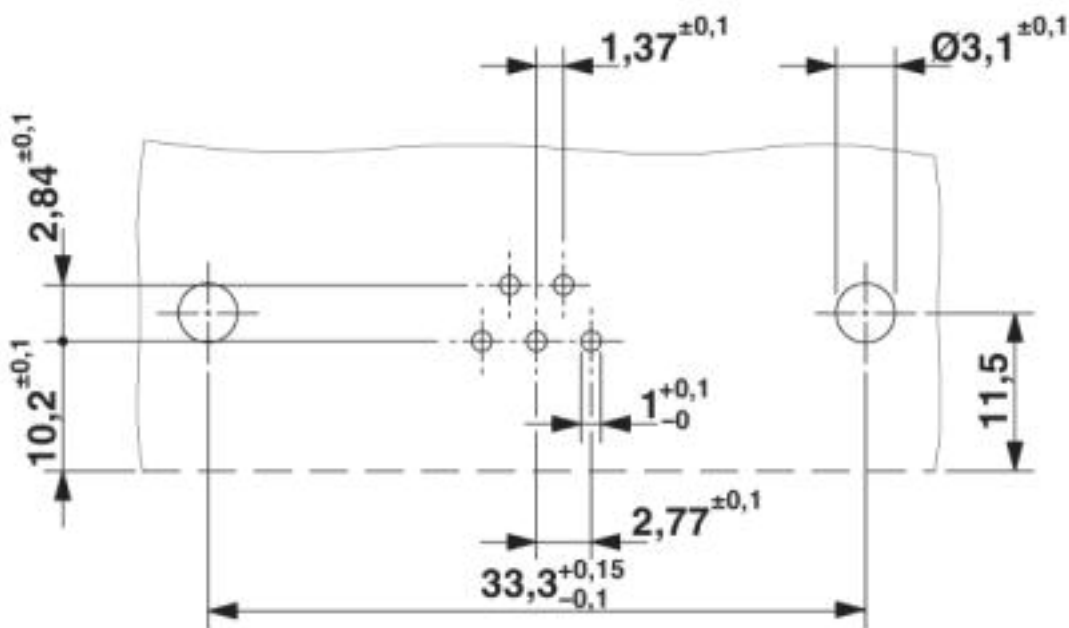


VS-BU-KX-75-LP - 1655632



## Drawings

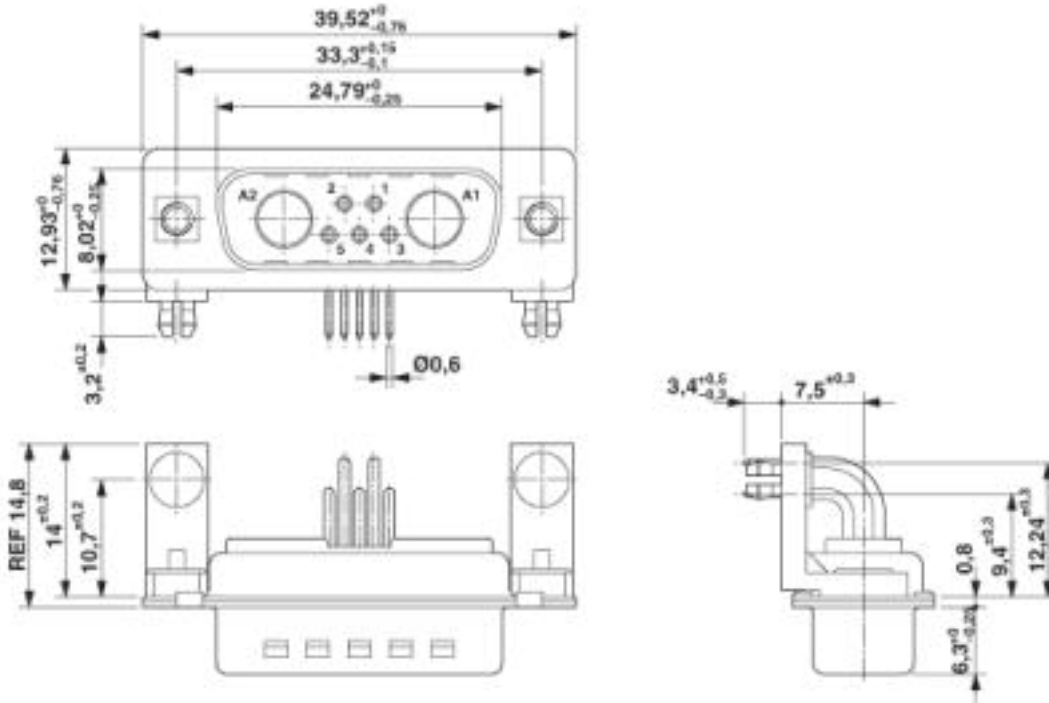
Drilling diagram



Drilling diagram

# D-SUB combination contact insert - VS-15-BU-DSUB-2P-5S-LH - 1655344

Dimensioned drawing



D-SUB contact insert

© Phoenix Contact 2013 - all rights reserved  
<http://www.phoenixcontact.com>