

Datasheet

Item no. 1231432/ 1231433/ 1231434/ 1231431/ 718779/ 718828/
718852/ 718926/ 718976/ 718878

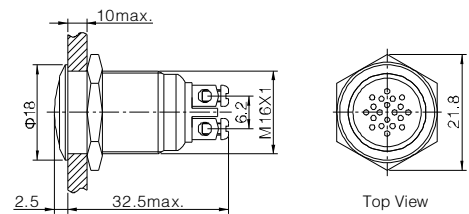
V1_0717_01_en



Buzzer



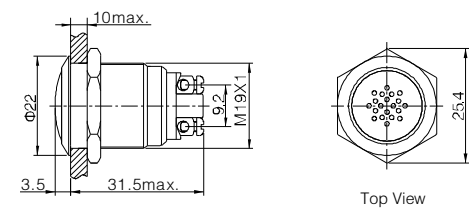
- ⊙ Φ 16mm Diameter
- ⊙ Sound Type: Continuous Buzz(M) / Incontinuous Buzz(JM)
- ⊙ Voltage: DC12V / DC24V
- ⊙ Rated Current: \leq 30mA
- ⊙ Sound Intensity: \geq 85dB(about 0.1Meter away)/
 \geq 75dB(about 1Meter away)
- ⊙ Crust Material: Stainless steel(S) IP
- ⊙ Degree: IP40,IK04



1231432 : Φ 16mm, Stainless steel crust, Continuous buzzer 12V, Rating voltage/current: 28mA 12VDC
1231433 : Φ 16mm, Stainless steel crust, Incontinuous buzzer 12V, Rating voltage/current: 28mA 12VDC



- ⊙ Φ 19mm Diameter
- ⊙ Sound Type: Continuous Buzz(M) / Incontinuous Buzz(JM)
- ⊙ Voltage: DC12V / DC24V
- ⊙ Rated Current \leq 30mA
- ⊙ Sound Intensity: \geq 85dB(about 0.1Meter away)/
 \geq 75dB(about 1Meter away)
- ⊙ Crust Material: Stainless steel(S) IP
- ⊙ Degree: IP40,IK04



1231434 : Φ 19mm, Stainless steel crust, Continuous buzzer 12V, Rating voltage/current: 28mA 12VDC

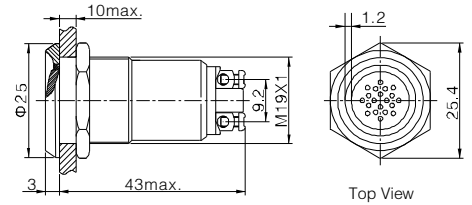
Datasheet

Item no. 1231432/ 1231433/ 1231434/ 1231431/ 718779/ 718828/
718852/ 718926/ 718976/ 718878

V1_0717_01_en



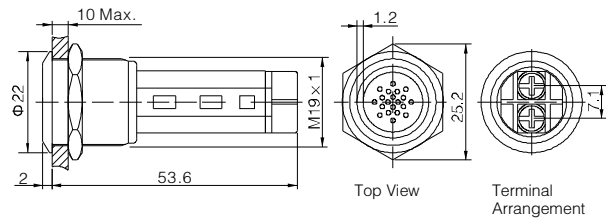
- ⊙ Φ 19mm Diameter
- ⊙ Sound Type: Flicker Buzzer
- ⊙ Color: **R** **G** **Y** **O** **B** **W**
- ⊙ Voltage: DC12V / DC24V
- ⊙ Rated Current: ≤30mA
- ⊙ Sound Intensity: ≥85dB(about 0.1Meter away)/
≥75dB(about 1Meter away)
- ⊙ Crust Material: Stainless steel(S)
- ⊙ IP Degree: IP40,IK04



1231431 : Φ19mm, Stainless steel crust, Continuous light, Continuous buzzer 12V, Rating voltage/current: 30mA 12VDC,



- ⊙ Φ 19mm Diameter
- ⊙ Sound Type : Continuous Buzz(M) /
Incontinuous Buzz(JM) /Flicker Buzzer(SM)
- ⊙ Color: **R** **G** **Y** **O** **B** **W**
- ⊙ Rated Voltage: DC12V /DC24V / A
C110V / AC220V
- ⊙ Sound Intensity: ≥85dB(about 0.1Meter away)/
≥75dB(about 1Meter away)
- ⊙ Crust Material: Stainless steel(S)
- ⊙ IP Degree: IP40,IK04



- 718779 : Illuminated buzzer, Stainless steel housing, 12V/DC, dia 19mm, red
- 718828 : Illuminated buzzer, Stainless steel housing, 24V/DC, dia 19mm, red
- 718852 : Illuminated buzzer, Stainless steel housing, 24V/DC, dia 19mm, blue
- 718926 : Illuminated buzzer, black housing, 12V/DC, dia 19mm, red
- 718976 : Illuminated buzzer, black housing, 24V/DC, dia 19mm, red
- 718878 : Illuminated buzzer, Stainless steel housing, 230VAC/50Hz, dia 19mm, red

1231432/ 1231433/ 1231434/ 1231431/ 718779/ 718828/ 718852/ 718926/ 718976/ 718878		Material	Voice Cover	Stainless steel
Panel Thickness	1 ~ 10mm		Body	Stainless steel
Torque	0.8Nm		Base	PBT
Terminal Type	Screw Terminal			
		RoHS	Yes	

This is a publication by Conrad Electronic SE, Klaus-Conrad-Str. 1, D-92240 Hirschau (www.conrad.com).
All rights including translation reserved. Reproduction by any method, e.g. photocopy, microfilming, or the capture in electronic data processing systems require the prior written approval by the editor. Reprinting, also in part, is prohibited. This publication represents the technical status at the time of printing.

© Copyright 2017 by Conrad Electronic SE.