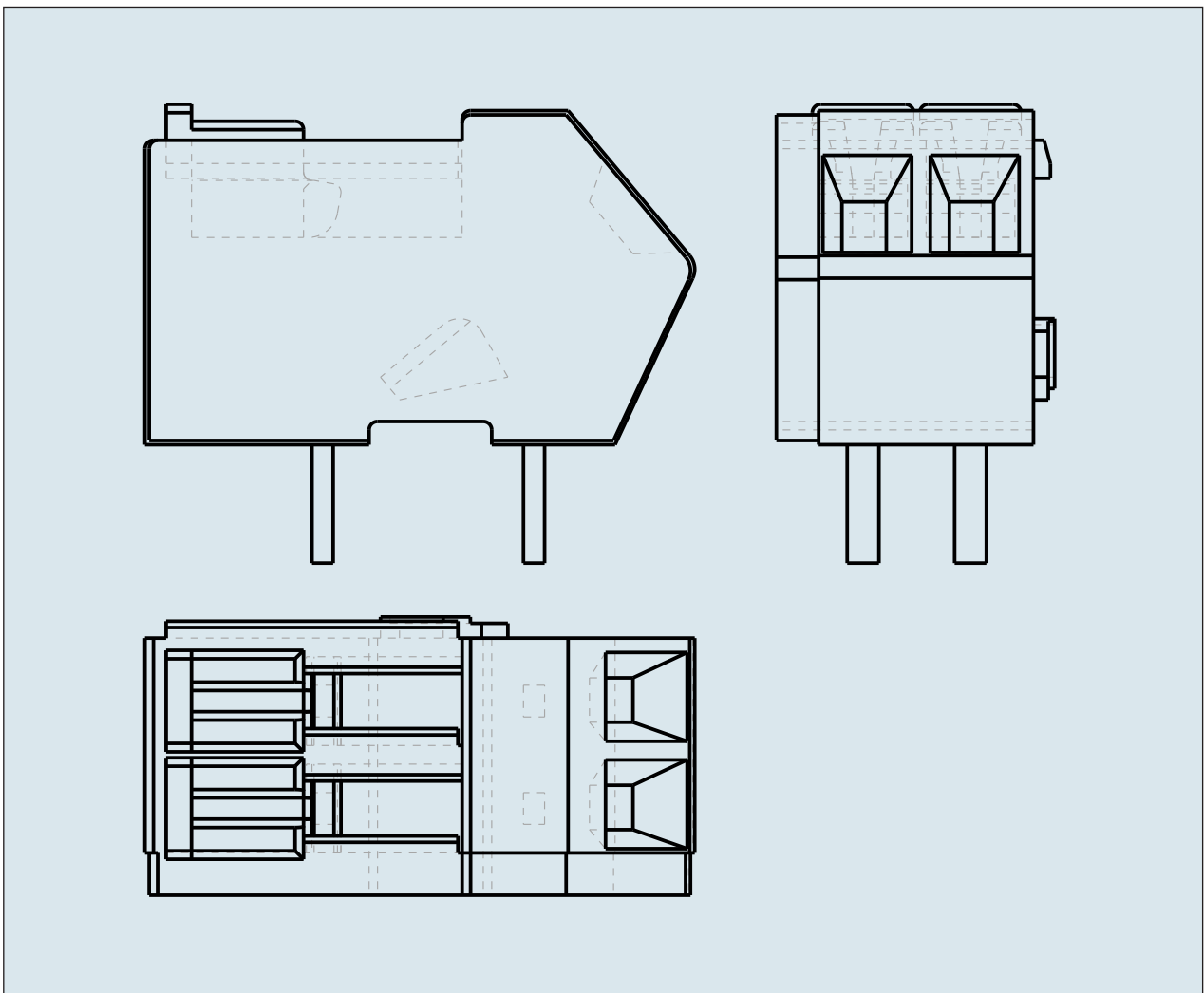
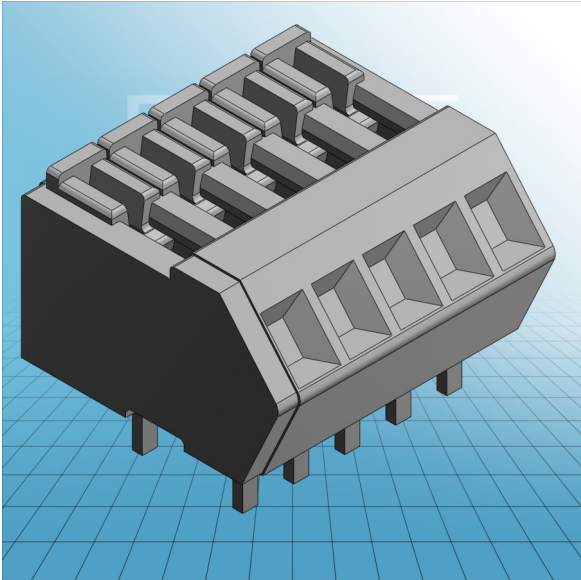


**1-CONDUCTOR PCB TERMINAL
STRIP 2 SOLDER PINS / POLE IN LINE
WITH LOCKING SIDE PIN SPACING 2.
54 MM / 0.1 IN**



**1-CONDUCTOR PCB TERMINAL
STRIP 2 SOLDER PINS / POLE IN LINE
WITH LOCKING SIDE PIN SPACING 2.
54 MM / 0.1 IN
218-502 TO 218-524**

ITEM-NO. (ITEM-NO.)	218-505
Cross section1 (Cross section / mm²)	0.08 - 0.5
Cross section2 (Cross section / AWG)	28 - 20
Strip length (Strip length / mm)	5 - 6
Measured voltage (Measured voltage / V)	160
Measured shock voltage (Measured shock voltage / kV)	2.5
Pollution degree (Pollution degree)	2
Current intensity (Current intensity / A)	6
RM (PIN SPACING / mm)	2.54
P (NO. OF POLES)	5
Height (Height / mm)	8.1
Width (Width / mm)	14.2
Depth (Depth / mm)	13
No. of connection Points (No. of connection Points)	5
No. of potentials (No. of potentials)	5
COLOR (COLOR)	grau
WEIGHT (WEIGHT / g)	1.697
Comment (Comment)	L = (No. of poles x Pin Spacing) + 1,5 mm
Dimensions (Dimensions)	1,1 +0,1 mm