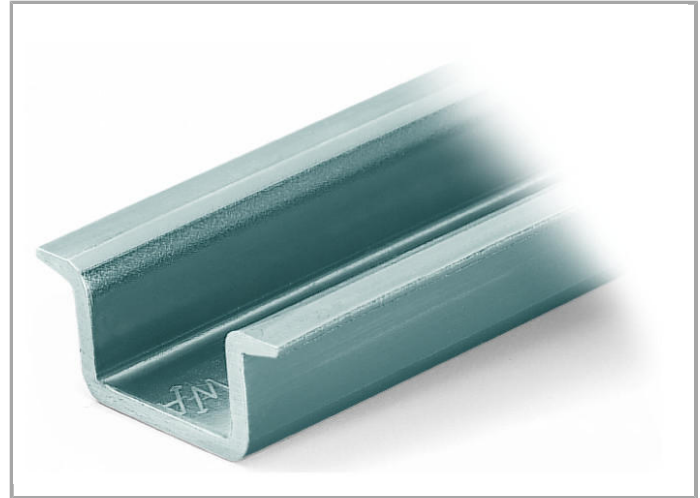
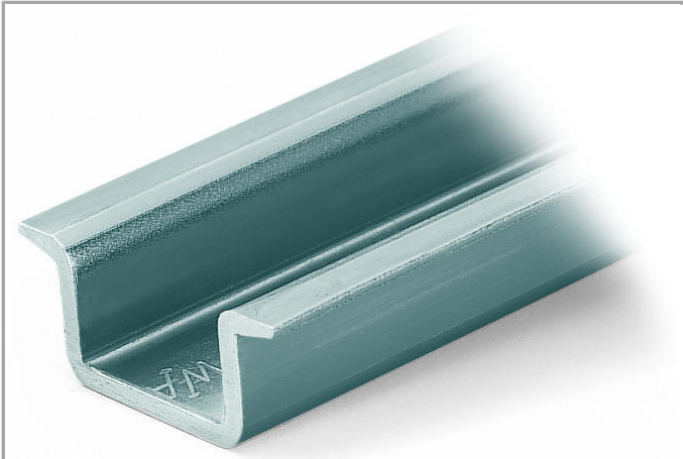


Data sheet | Item number: 210-118

Steel carrier rail; 35 x 15 mm; 2.3 mm thick; 2 m long; unslotted; according to EN 60715

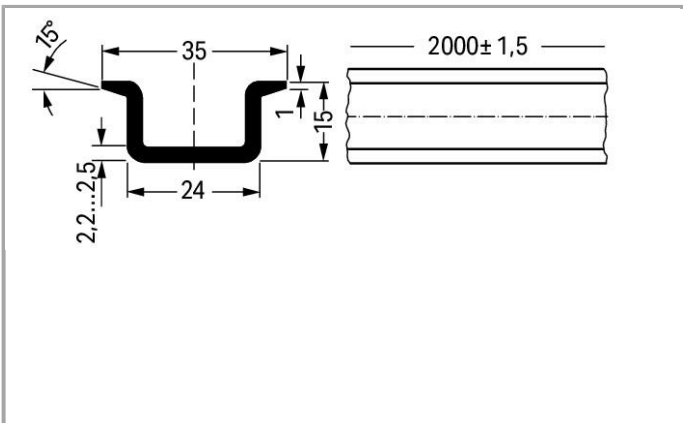


www.wago.com/210-118



RoHS
Compliant

✓
BOMcheck.net



Data

Technical Data

Main product function

Mounting Accessories

Geometrical Data

Abmessungen B x H x T (mm)

(2000 x 15 x 35) mm

Width

2000 mm / 78.74 inch

Abmessungen B x H x T (inch)

(78.74 x 0.591 x 1.378) inch

Height	15 mm / 0.591 inch
Depth	35 mm / 1.378 inch

Material Data

Color	bluish, tinned, chromed, CR3
Weight	1820 g

Commercial data





Country of origin	IT
GTIN	4017332277181
Customs Tariff No.	72169180000
Product Group	2 (Terminal Block Accessories)

Compatible products

Marking accessories

	Item no.: 210-708 Labels; for TP printers	www.wago.com/210-708
	Item no.: 210-808 Labels; for smartPRINTER	www.wago.com/210-808

assembling

	Item no.: 209-137 Mounting adapter; can be used as end plate; 6.5 mm wide	www.wago.com/209-137
	Item no.: 249-116 Screwless end stop; 6 mm wide	www.wago.com/249-116
	Item no.: 249-117 Screwless end stop; 10 mm wide	www.wago.com/249-117
	Item no.: 249-197 Screwless end stop; 14 mm wide	www.wago.com/249-197

Downloads

Documentation

Bid Text

210-118	Oct 10, 2017	DOC 24.1 kB	Download
---------	--------------	----------------	----------

smartDATA

CAD data



3D Download 210-118

URL

Download

Subject to changes.

WAGO Kontakttechnik GmbH & Co. KG
Hansastr. 27
32423 Minden
Phone: +49571 887-0 | Fax: +49571 887-169
Email: info.de@wago.com | Web: www.wago.com

Do you have any questions about our products?
We are always happy to take your call at +49 (571) 887-44222.