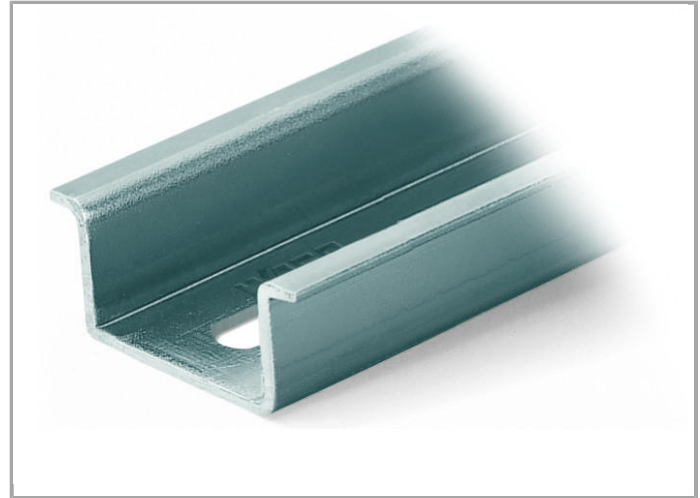
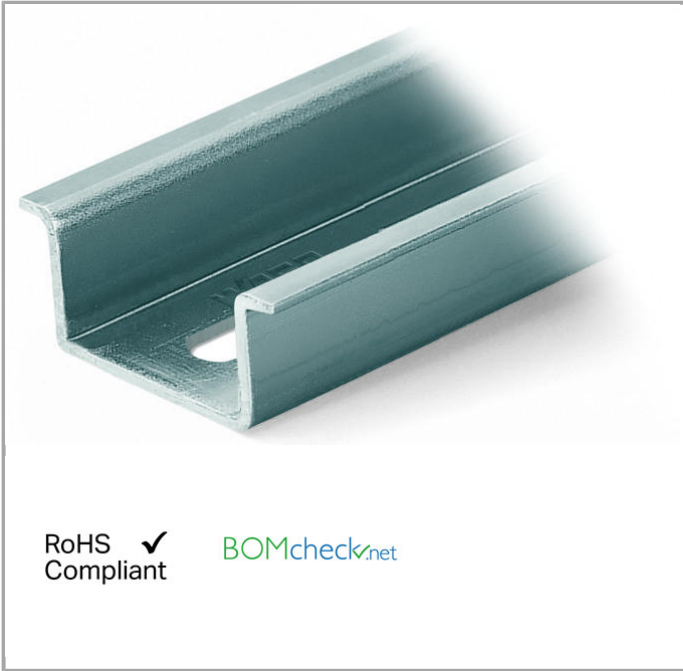


Data sheet | Item number: 210-197

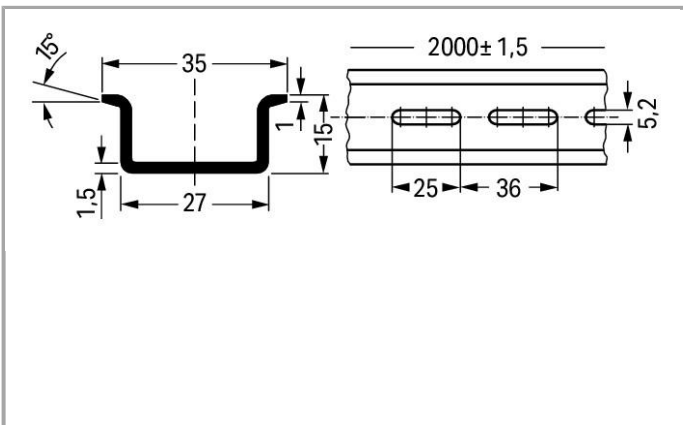
Steel carrier rail; 35 x 15 mm; 1.5 mm thick; 2 m long; slotted; similar to EN 60715



[www.wago.com/210-197](http://www.wago.com/210-197)



RoHS  Compliant [BOMcheck.net](https://www.bomcheck.net)



Data

Technical Data

Main product function

Mounting Accessories

Geometrical Data

Abmessungen B x H x T (mm)	(2000 x 15 x 35) mm
Width	2000 mm / 78.74 inch
Abmessungen B x H x T (inch)	(78.74 x 0.591 x 1.378) inch
Height	15 mm / 0.591 inch

Depth	35 mm / 1.378 inch
-------	--------------------

## Material Data

Color	bluish, tinned, chromed, CR3
Weight	1235 g

## Commercial data

Country of origin	IT
GTIN	4017332102759
Customs Tariff No.	72169180000
Product Group	2 (Terminal Block Accessories)

## Compatible products

### Marking accessories



**Item no.: 210-708**  
Labels; for TP printers

[www.wago.com/210-708](http://www.wago.com/210-708)



**Item no.: 210-808**  
Labels; for smartPRINTER

[www.wago.com/210-808](http://www.wago.com/210-808)

### assembling



**Item no.: 209-137**  
Mounting adapter; can be used as end plate; 6.5 mm wide

[www.wago.com/209-137](http://www.wago.com/209-137)



**Item no.: 210-148**  
Angled support bracket; without screw

[www.wago.com/210-148](http://www.wago.com/210-148)



**Item no.: 210-149**  
Screw M 5 x 8; for angled support bracket

[www.wago.com/210-149](http://www.wago.com/210-149)



**Item no.: 249-116**  
Screwless end stop; 6 mm wide

[www.wago.com/249-116](http://www.wago.com/249-116)



**Item no.: 249-117**  
Screwless end stop; 10 mm wide

[www.wago.com/249-117](http://www.wago.com/249-117)



**Item no.: 249-197**  
Screwless end stop; 14 mm wide

[www.wago.com/249-197](http://www.wago.com/249-197)

## Downloads

### Documentation

#### Bid Text

210-197	Oct 10, 2017	DOC 24.1 kB	Download
---------	--------------	----------------	----------



smartDATA

CAD data

3D Download 210-197

URL

Download

---

Subject to changes.