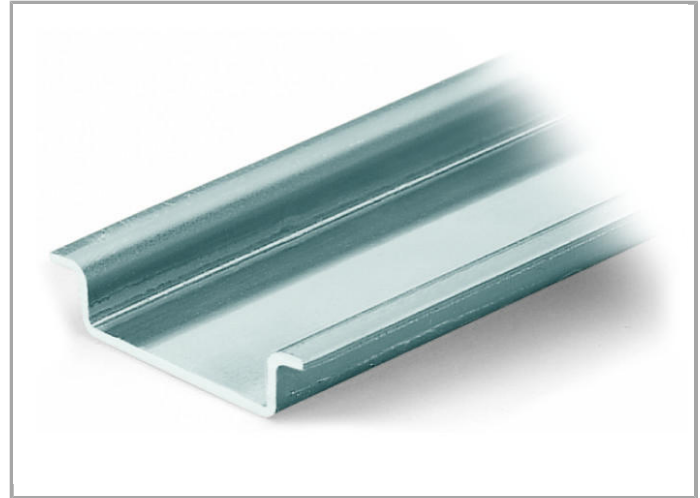
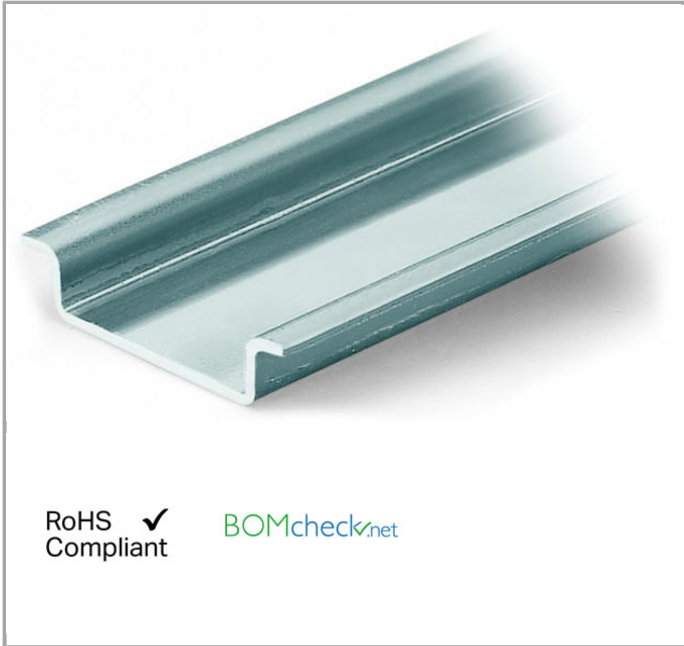


## Data sheet | Item number: 210-505

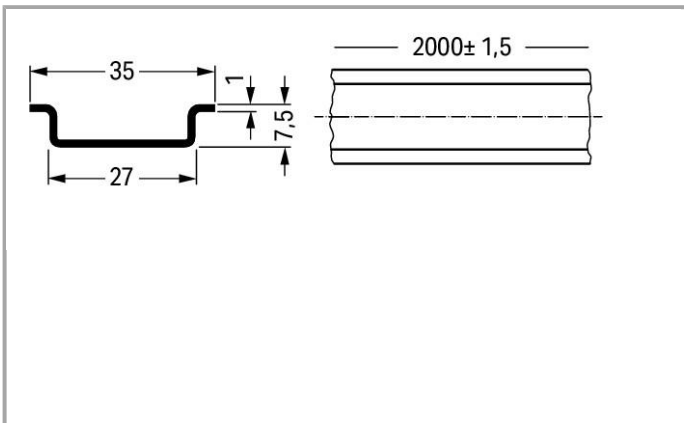
Steel carrier rail; 35 x 7.5 mm; 1 mm thick; 2 m long; unslotted; galvanized; according to EN 60715



[www.wago.com/210-505](http://www.wago.com/210-505)



RoHS  Compliant [BOMcheck.net](https://www.bomcheck.net)



### Data

#### Technical Data

Main product function

Mounting Accessories

#### Geometrical Data

Abmessungen B x H x T (mm)	(2000 x 7.5 x 35) mm
Width	2000 mm / 78.74 inch
Abmessungen B x H x T (inch)	(78.74 x 0.295 x 1.378) inch
Height	7.5 mm / 0.295 inch

Depth	35 mm / 1.378 inch
-------	--------------------

### Material Data

Color	tinned
Weight	699 g

### Commercial data

Country of origin	IT
GTIN	4017332667593
Customs Tariff No.	72169180000
Product Group	2 (Terminal Block Accessories)

### Compatible products

#### Marking accessories



**Item no.: 210-708**  
Labels; for TP printers

[www.wago.com/210-708](http://www.wago.com/210-708)



**Item no.: 210-808**  
Labels; for smartPRINTER

[www.wago.com/210-808](http://www.wago.com/210-808)

#### assembling



**Item no.: 209-137**  
Mounting adapter; can be used as end plate; 6.5 mm wide

[www.wago.com/209-137](http://www.wago.com/209-137)



**Item no.: 249-116**  
Screwless end stop; 6 mm wide

[www.wago.com/249-116](http://www.wago.com/249-116)



**Item no.: 249-117**  
Screwless end stop; 10 mm wide

[www.wago.com/249-117](http://www.wago.com/249-117)



**Item no.: 249-197**  
Screwless end stop; 14 mm wide

[www.wago.com/249-197](http://www.wago.com/249-197)

### Downloads

#### Documentation

#### Bid Text

210-505	Mar 9, 2018	DOC 24.1 kB	Download
---------	-------------	----------------	----------

### smartDATA

#### CAD data

3D Download 210-505



Subject to changes.

---

WAGO Kontakttechnik GmbH & Co. KG  
Hansastr. 27  
32423 Minden  
Phone: +49571 887-0 | Fax: +49571 887-169  
Email: [info.de@wago.com](mailto:info.de@wago.com) | Web: [www.wago.com](http://www.wago.com)

Do you have any questions about our products?  
We are always happy to take your call at +49 (571) 887-44222.