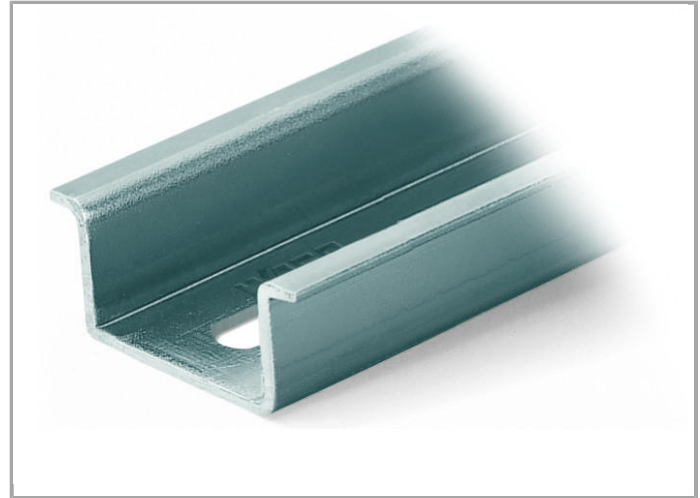
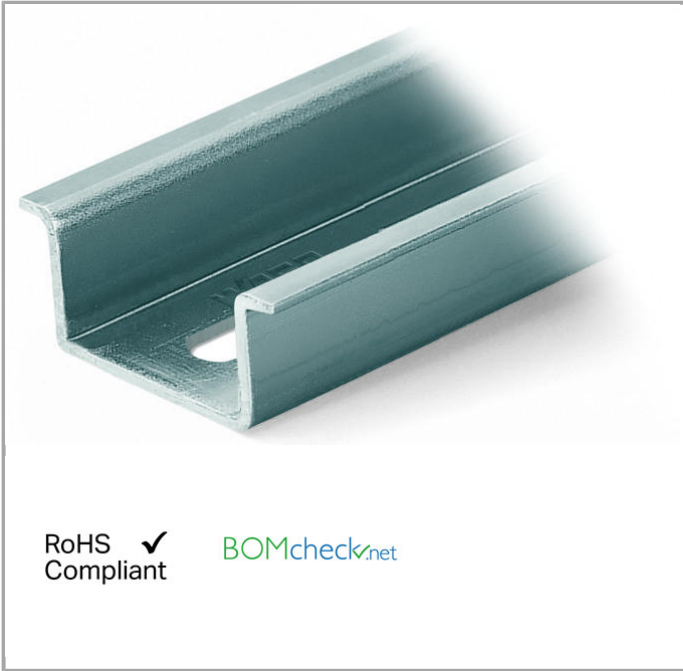


Data sheet | Item number: 210-508

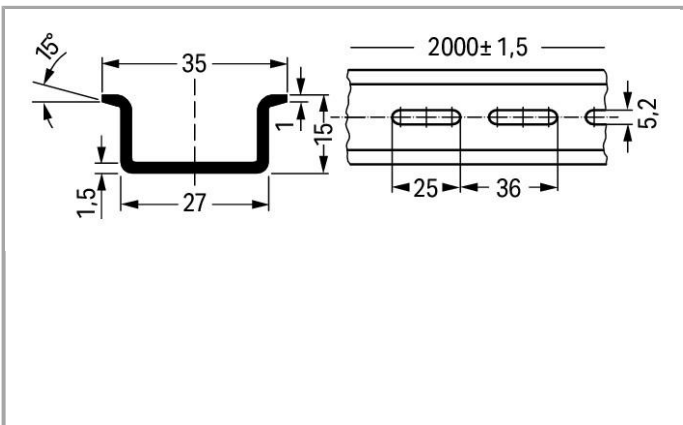
Steel carrier rail; 35 x 15 mm; 1.5 mm thick; 2 m long; slotted; galvanized; similar to EN 60715

www.wago.com/210-508



RoHS
Compliant ✓

BOMcheck.net



Data

Technical Data

Main product function

Mounting Accessories

Geometrical Data

Abmessungen B x H x T (mm)	(2000 x 15 x 35) mm
Width	2000 mm / 78.74 inch
Abmessungen B x H x T (inch)	(78.74 x 0.591 x 1.378) inch
Height	15 mm / 0.591 inch

Depth	35 mm / 1.378 inch
-------	--------------------

Material Data

Color	tinned
Weight	1245 g

Commercial data

Country of origin	IT
GTIN	4017332791304
Customs Tariff No.	72169180000
Product Group	2 (Terminal Block Accessories)

Compatible products

assembling



Item no.: 209-137
Mounting adapter; can be used as end plate; 6.5 mm wide

www.wago.com/209-137



Item no.: 210-148
Angled support bracket; without screw

www.wago.com/210-148



Item no.: 210-149
Screw M 5 x 8; for angled support bracket

www.wago.com/210-149



Item no.: 249-116
Screwless end stop; 6 mm wide

www.wago.com/249-116



Item no.: 249-117
Screwless end stop; 10 mm wide

www.wago.com/249-117



Item no.: 249-197
Screwless end stop; 14 mm wide

www.wago.com/249-197

Marking accessories



Item no.: 210-708
Labels; for TP printers

www.wago.com/210-708



Item no.: 210-808
Labels; for smartPRINTER

www.wago.com/210-808

Downloads

Documentation

Bid Text

210-508

Mar 9, 2018

DOC
24.6 kB

Download



Subject to changes.

WAGO Kontakttechnik GmbH & Co. KG
Hansastr. 27
32423 Minden
Phone: +49571 887-0 | Fax: +49571 887-169
Email: info.de@wago.com | Web: www.wago.com

Do you have any questions about our products?
We are always happy to take your call at +49 (571) 887-44222.