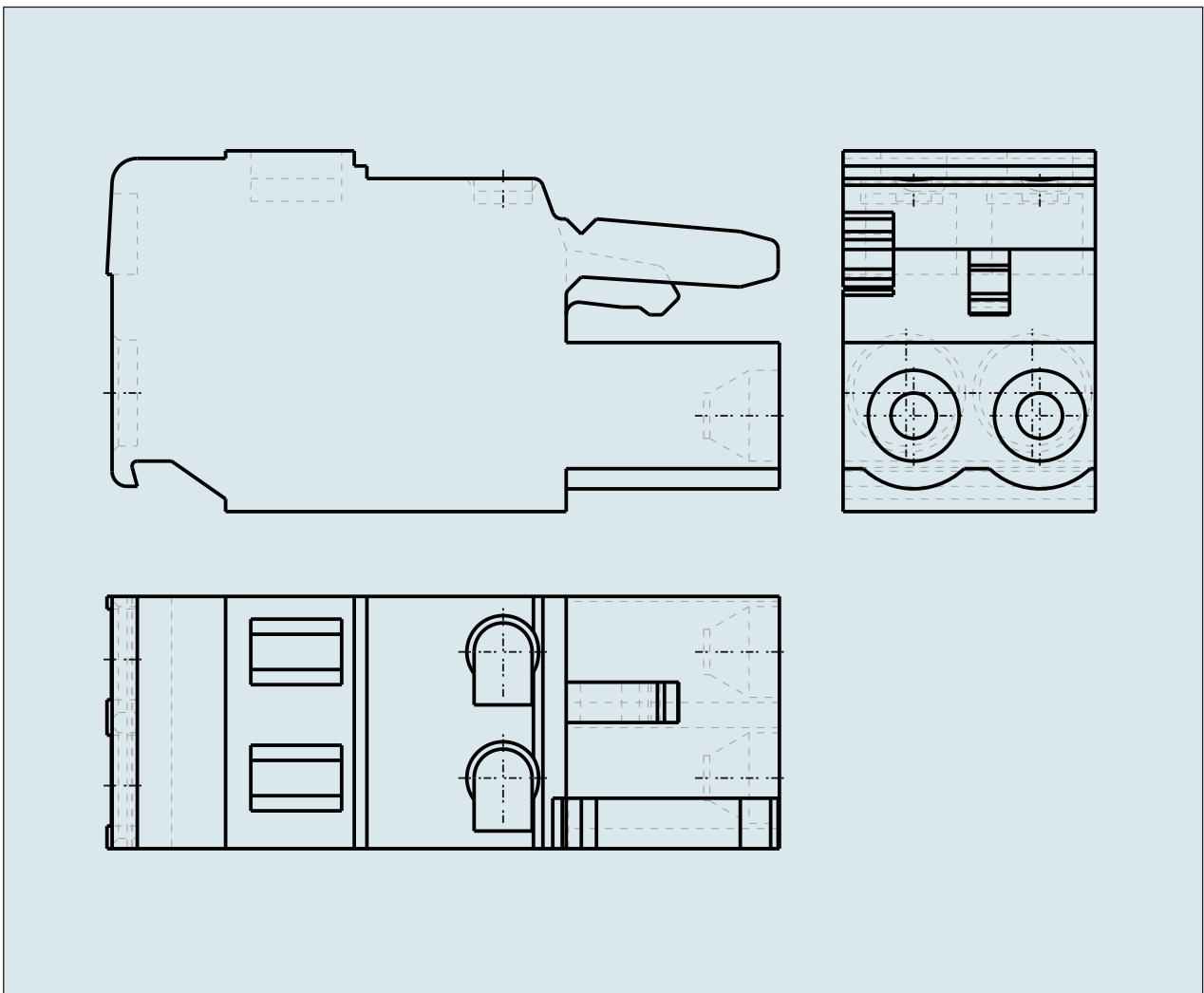
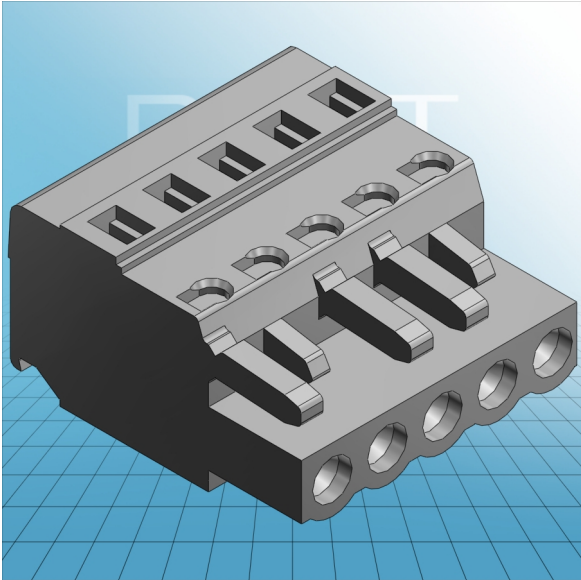


**FEMALE PLUG WITH SCREW  
FLANGES PIN SPACING 3.5 MM / 0.  
138 IN 100% PROTECTED AGAINST  
MISMATING**



**FEMALE PLUG WITH SCREW  
FLANGES PIN SPACING 3.5 MM / 0.  
138 IN 100% PROTECTED AGAINST  
MISMATING  
713-1103/107-000 TO 713-1118/107-000**

<b>ITEM-NO. (ITEM-NO.)</b>	231-105/102-000
<b>Cross section1 (Cross section / mm<sup>2</sup>)</b>	0.08 - 2.5
<b>Cross section2 (Cross section / AWG)</b>	28 - 12
<b>Strip length (Strip length / mm)</b>	8 - 9
<b>Measured voltage (Measured voltage / V)</b>	320
<b>Measured shock voltage (Measured shock voltage / kV)</b>	4
<b>Pollution degree (Pollution degree)</b>	2
<b>Current intensity (Current intensity / A)</b>	16
<b>RM (PIN SPACING / mm)</b>	5
<b>P (NO. OF POLES)</b>	5
<b>Height (Height / mm)</b>	14.3
<b>Width (Width / mm)</b>	25
<b>Depth (Depth / mm)</b>	26.45
<b>No. of connection Points (No. of connection Points)</b>	5
<b>No. of potentials (No. of potentials)</b>	5
<b>COLOR (COLOR)</b>	grau
<b>WEIGHT (WEIGHT / g)</b>	8.795
<b>Comment (Comment)</b>	L = (No. of poles x Pin Spacing)