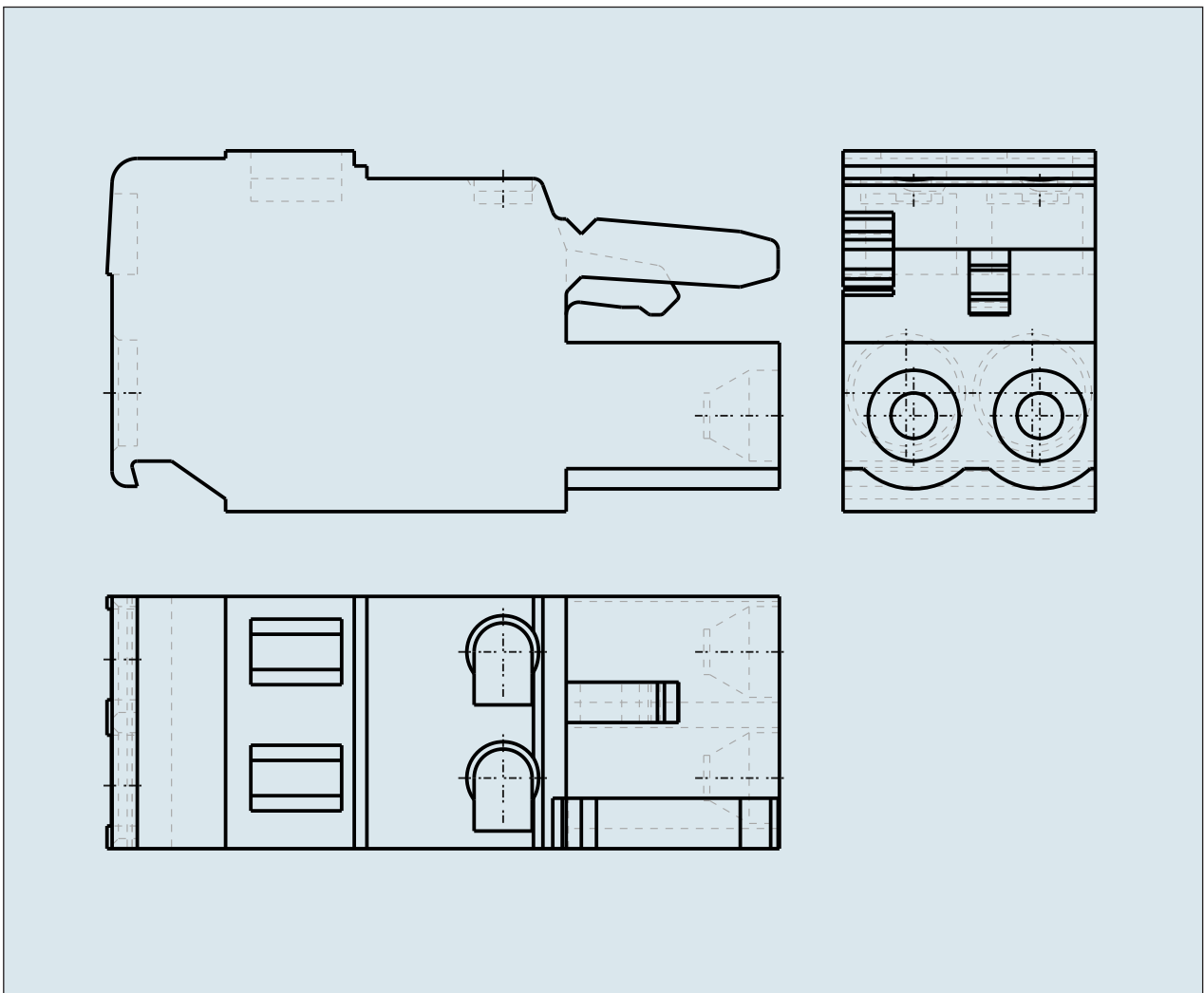
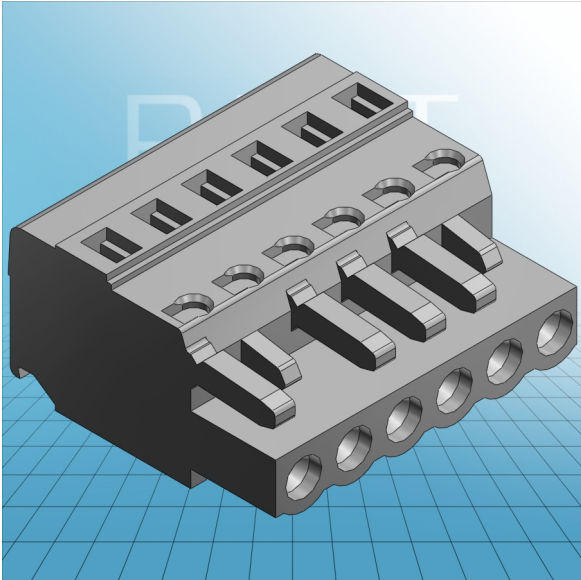


**FEMALE PLUG WITH SCREW  
FLANGES PIN SPACING 3.5 MM / 0.  
138 IN 100% PROTECTED AGAINST  
MISMATING**



**FEMALE PLUG WITH SCREW  
FLANGES PIN SPACING 3.5 MM / 0.  
138 IN 100% PROTECTED AGAINST  
MISMATING**  
713-1103/107-000 TO 713-1118/107-000

|   |                                  |
|---|----------------------------------|
| <b>ITEM-NO. (ITEM-NO.)</b>                                  | 231-106/102-000                  |
| <b>Cross section1 (Cross section / mm<sup>2</sup>)</b>      | 0.08 - 2.5                       |
| <b>Cross section2 (Cross section / AWG)</b>                 | 28 - 12                          |
| <b>Strip length (Strip length / mm)</b>                     | 8 - 9                            |
| <b>Measured voltage (Measured voltage / V)</b>              | 320                              |
| <b>Measured shock voltage (Measured shock voltage / kV)</b> | 4                                |
| <b>Pollution degree (Pollution degree)</b>                  | 2                                |
| <b>Current intensity (Current intensity / A)</b>            | 16                               |
| <b>RM (PIN SPACING / mm)</b>                                | 5                                |
| <b>P (NO. OF POLES)</b>                                     | 6                                |
| <b>Height (Height / mm)</b>                                 | 14.3                             |
| <b>Width (Width / mm)</b>                                   | 30                               |
| <b>Depth (Depth / mm)</b>                                   | 26.45                            |
| <b>No. of connection Points (No. of connection Points)</b>  | 6                                |
| <b>No. of potentials (No. of potentials)</b>                | 6                                |
| <b>COLOR (COLOR)</b>  | grau                             |
| <b>WEIGHT (WEIGHT / g)</b>                                  | 10.545                           |
| <b>Comment (Comment)</b>                                    | L = (No. of poles x Pin Spacing) |