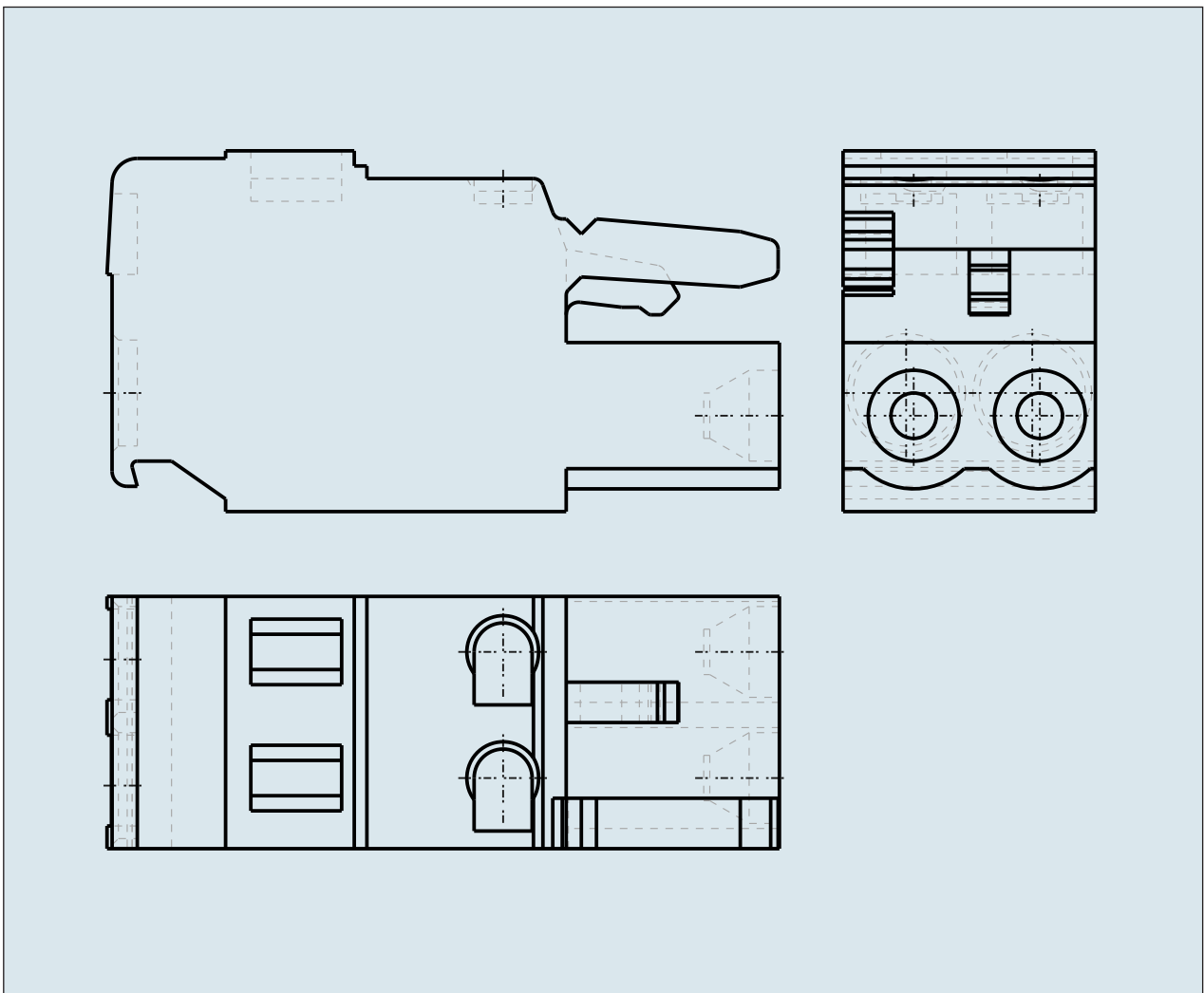
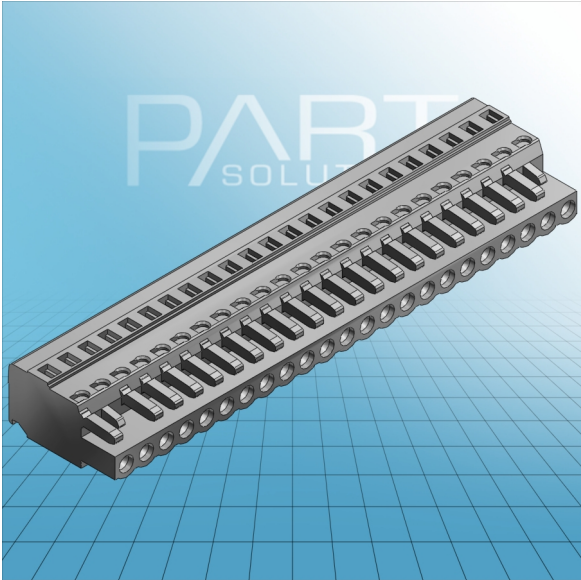


**FEMALE PLUG WITH SCREW
FLANGES PIN SPACING 3.5 MM / 0.
138 IN 100% PROTECTED AGAINST
MISMATING**



**FEMALE PLUG WITH SCREW
FLANGES PIN SPACING 3.5 MM / 0.
138 IN 100% PROTECTED AGAINST
MISMATING**
713-1103/107-000 TO 713-1118/107-000

ITEM-NO. (ITEM-NO.)	231-123/102-000
Cross section1 (Cross section / mm²)	0.08 - 2.5
Cross section2 (Cross section / AWG)	28 - 12
Strip length (Strip length / mm)	8 - 9
Measured voltage (Measured voltage / V)	320
Measured shock voltage (Measured shock voltage / kV)	4
Pollution degree (Pollution degree)	2
Current intensity (Current intensity / A)	16
RM (PIN SPACING / mm)	5
P (NO. OF POLES)	23
Height (Height / mm)	14.3
Width (Width / mm)	115
Depth (Depth / mm)	26.45
No. of connection Points (No. of connection Points)	23
No. of potentials (No. of potentials)	23
COLOR (COLOR)	grau
WEIGHT (WEIGHT / g)	40.295
Comment (Comment)	L = (No. of poles x Pin Spacing)