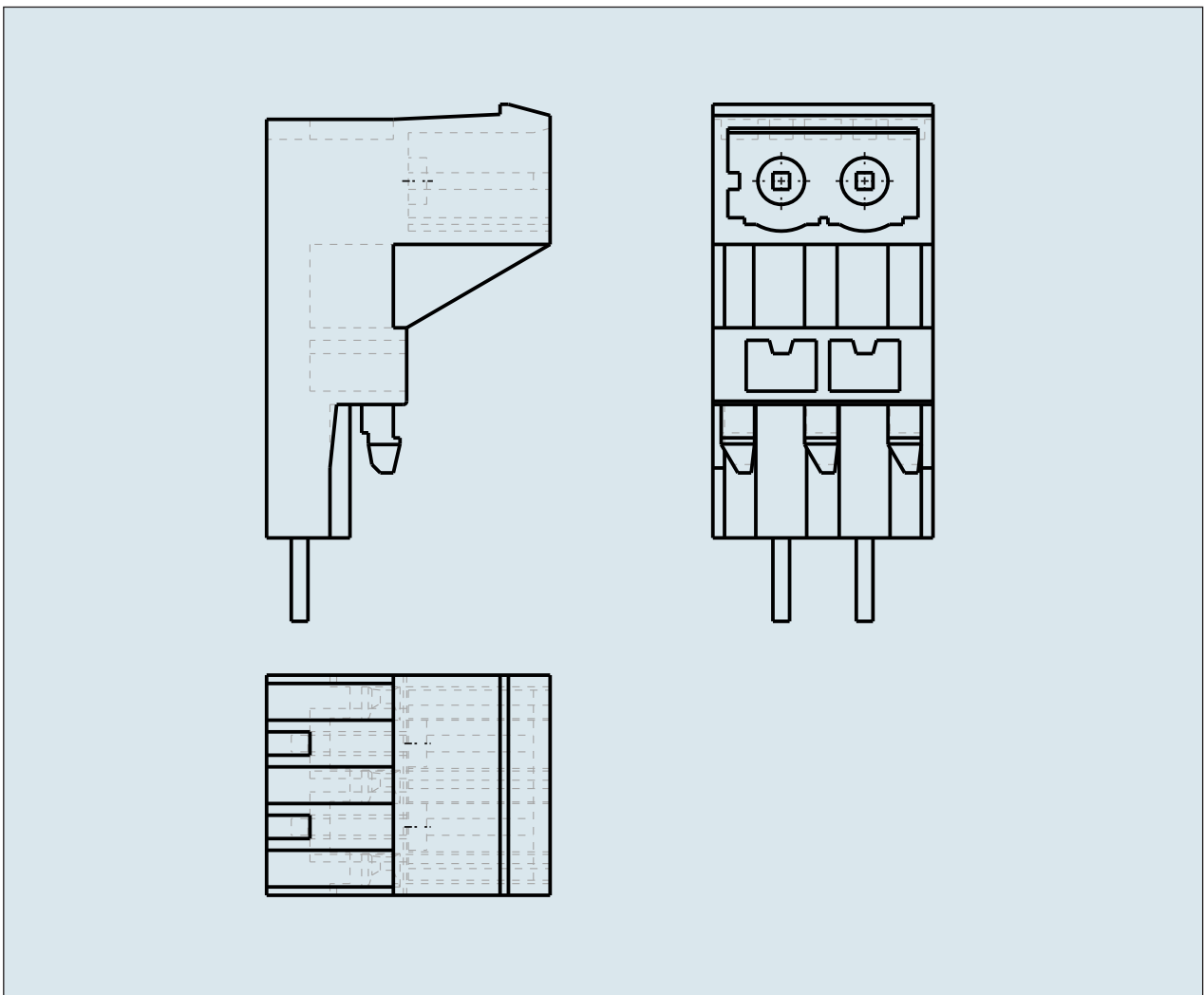
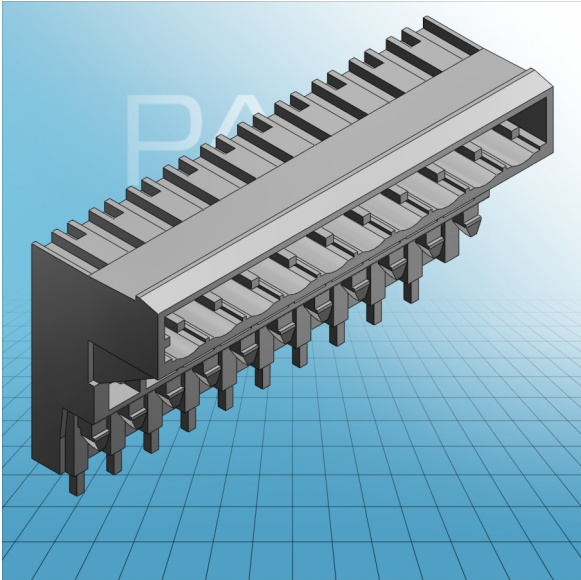


**HEADERS FOR DOUBLE DECK  
ASSEMBLY RIGHT ANGLE SOLDER  
PIN, 1 X 1 MM / 0.039 X 0.039 IN PIN  
SPACING 5 MM / 0.197 IN**



**HEADERS FOR DOUBLE DECK  
ASSEMBLY RIGHT ANGLE SOLDER  
PIN, 1 X 1 MM / 0.039 X 0.039 IN PIN  
SPACING 5 MM / 0.197 IN  
232-332 TO 232-346**

<b>ITEM-NO. (ITEM-NO.)</b>	232-340
<b>Measured voltage (Measured voltage / V)</b>	320
<b>Measured shock voltage (Measured shock voltage / kV)</b>	4
<b>Pollution degree (Pollution degree)</b>	2
<b>Current intensity (Current intensity / A)</b>	12
<b>RM (PIN SPACING / mm)</b>	5
<b>P (NO. OF POLES)</b>	10
<b>Height (Height / mm)</b>	26
<b>Width (Width / mm)</b>	53.2
<b>Depth (Depth / mm)</b>	17
<b>COLOR (COLOR)</b>	grau
<b>WEIGHT (WEIGHT / g)</b>	8.6
<b>Comment (Comment)</b>	L = (No. of poles x Pin Spacing) + 3,2 mm
<b>Dimensions (Dimensions)</b>	1,4 +0,1 mm