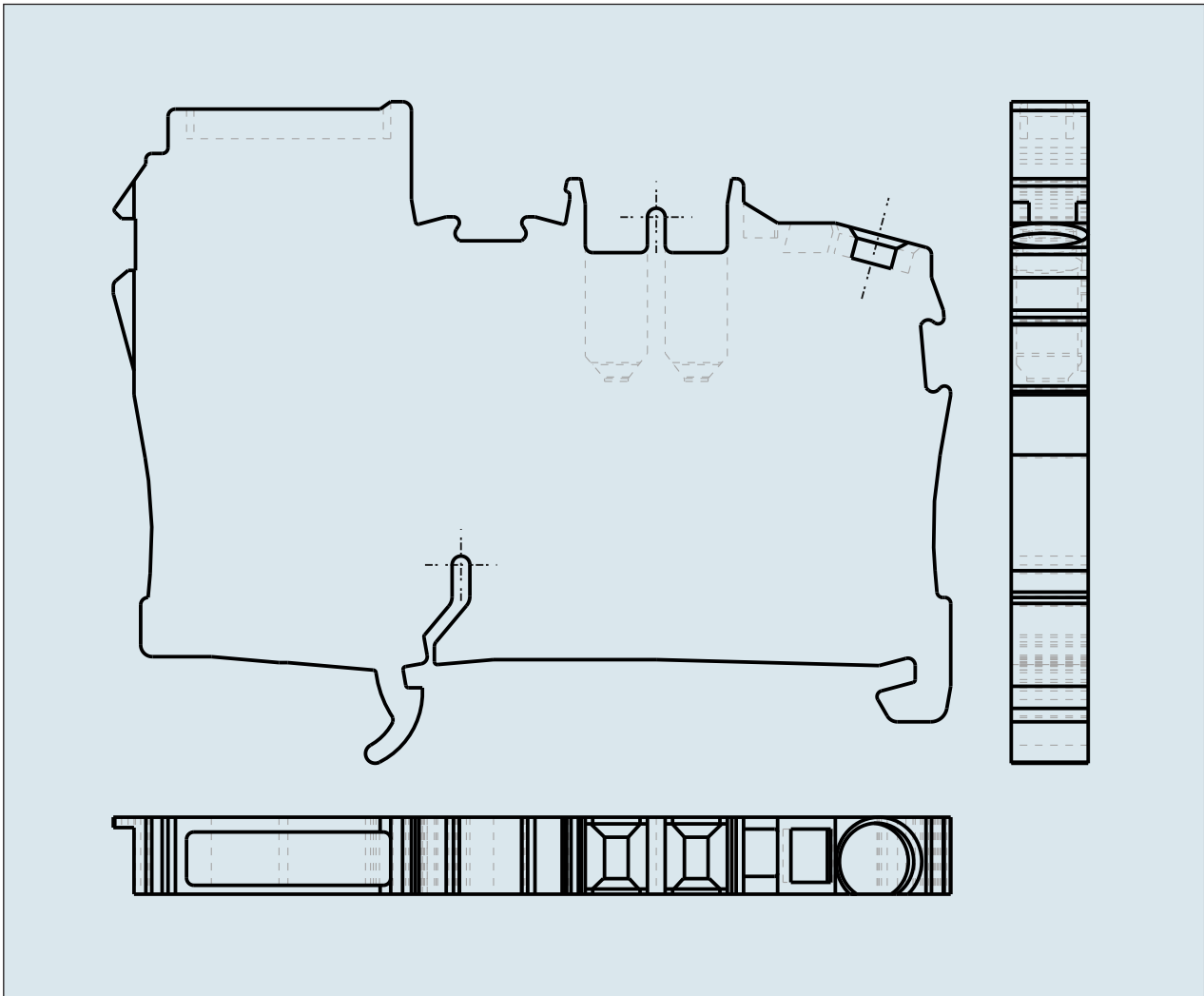
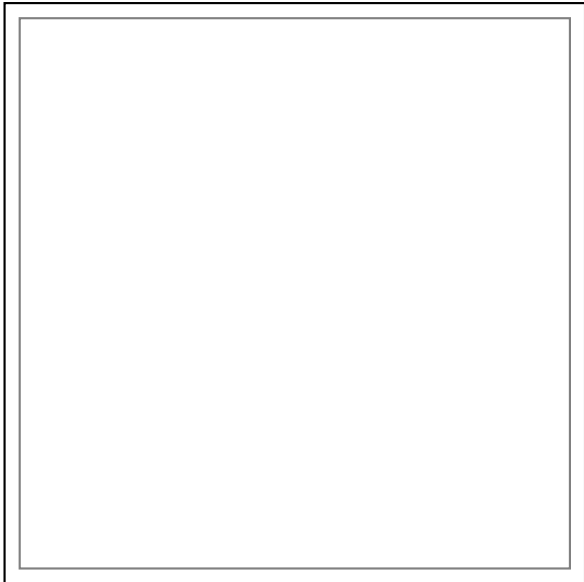
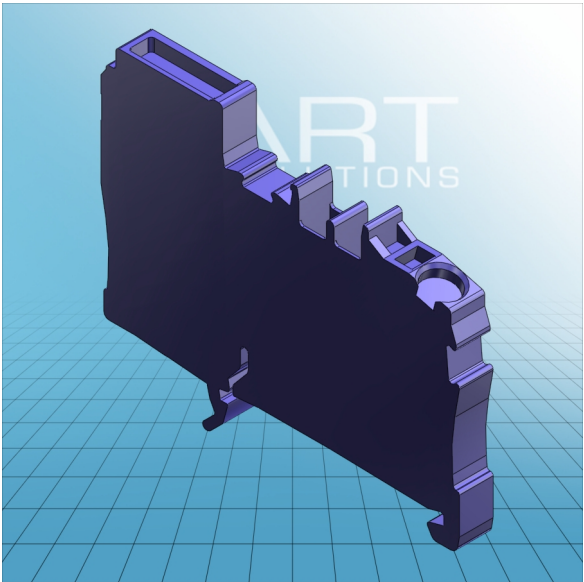


**1-Conductor n-disconnect terminal  
block**  
2002-7114



**1-Conductor n-disconnect terminal  
block**  
2002-7114

<b>ITEM-NO. (ITEM-NO.)</b>	2002-7114
<b>Cross section1 (Cross section / mm<sup>2</sup>)</b>	0.25 - 2.5 (4)
<b>Cross section2 (Cross section / AWG)</b>	22 - 12
<b>Strip length (Strip length / mm)</b>	10 - 12
<b>Measured voltage (Measured voltage / V)</b>	250
<b>Measured shock voltage (Measured shock voltage / kV)</b>	4
<b>Pollution degree (Pollution degree)</b>	3
<b>Current intensity (Current intensity / A)</b>	32
<b>Height (Height / mm)</b>	38
<b>Width (Width / mm)</b>	5.2
<b>Depth (Depth / mm)</b>	56
<b>No. of connection Points (No. of connection Points)</b>	1
<b>No. of potentials (No. of potentials)</b>	1
<b>COLOR (COLOR)</b>	blau