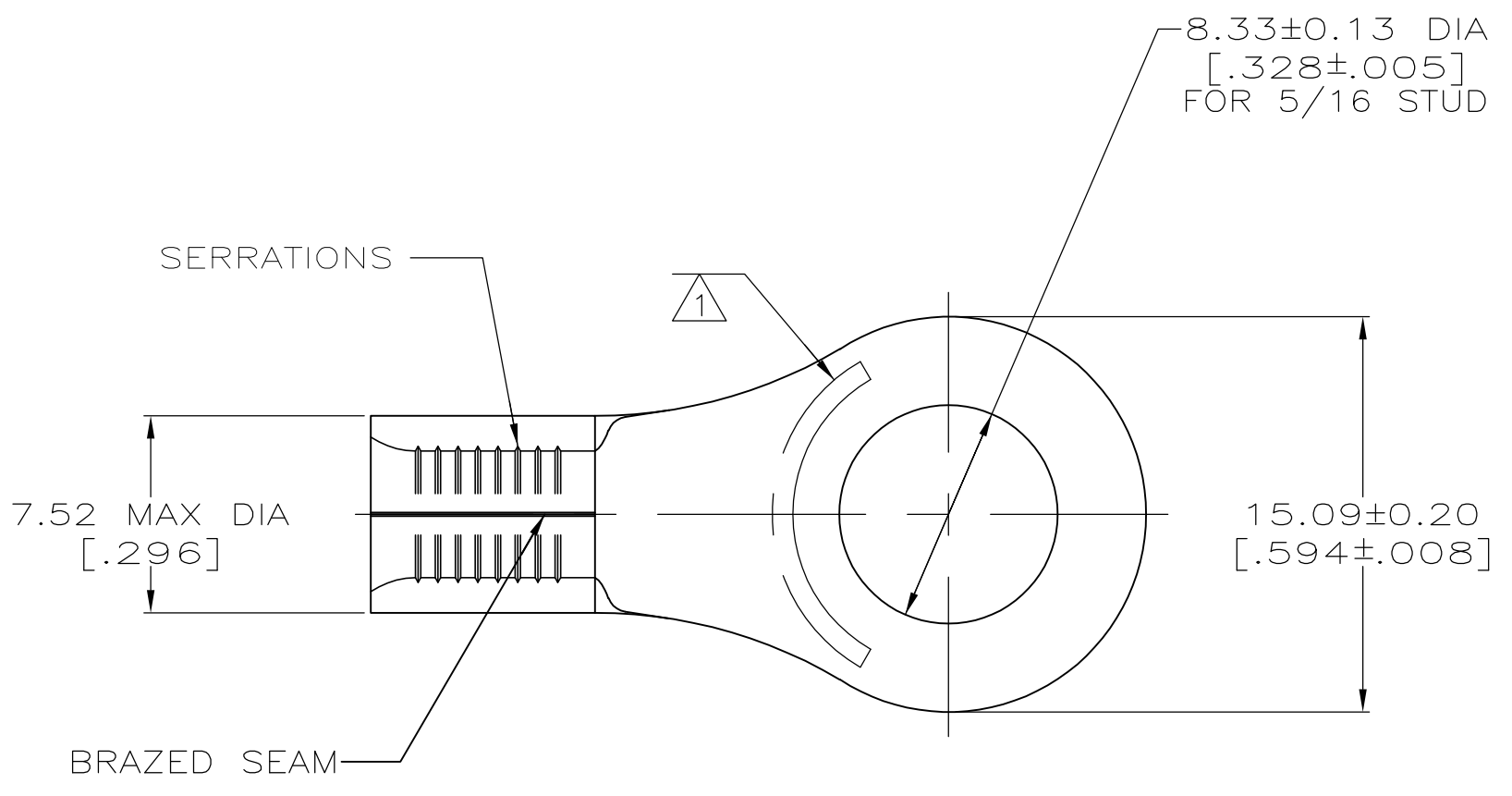
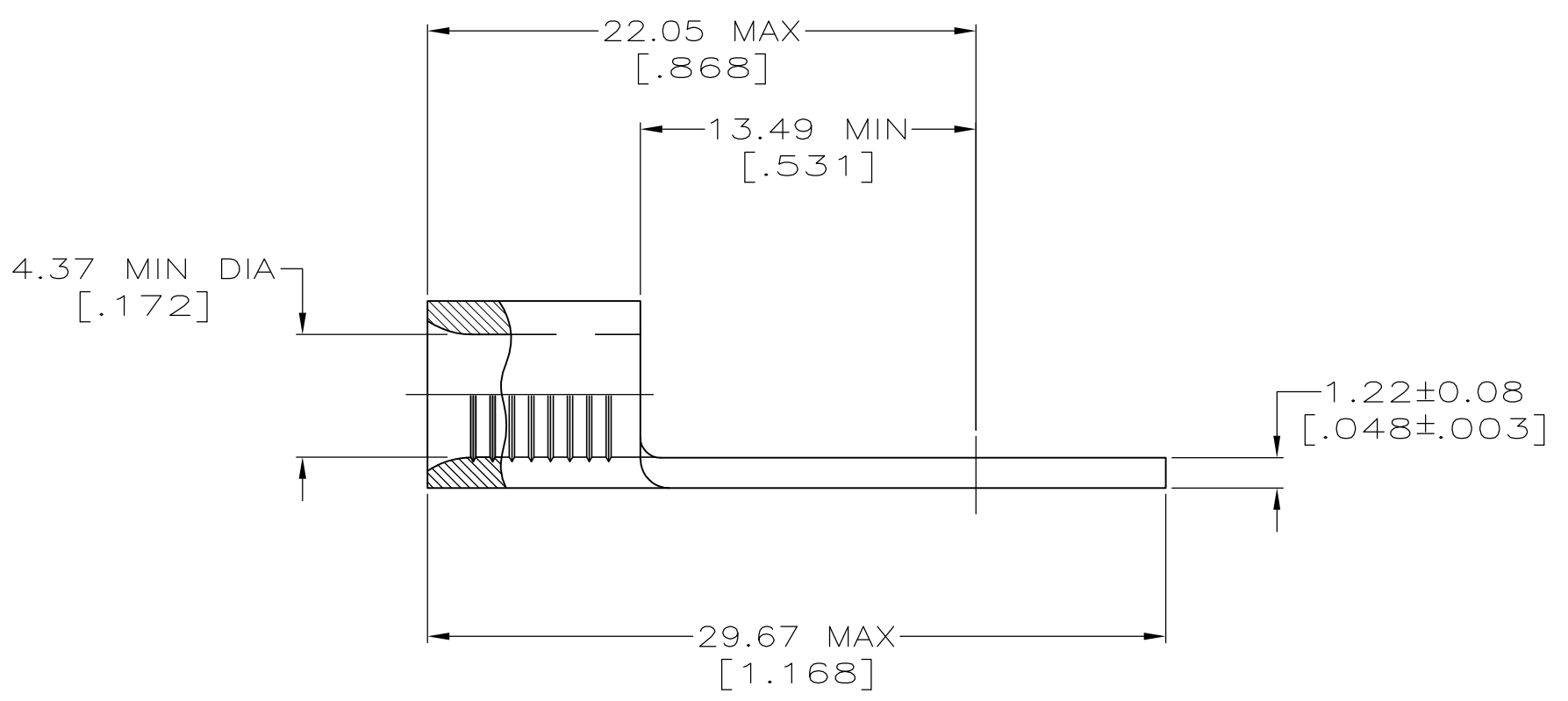


METRIC
 DIMENSIONS LISTED IN mm [INCHES]



AMP WIRE RANGE	E13288 Listed
8 AWG SOLID OR STRANDED	8 AWG STRANDED
LR7189 Certified	MILITARY P/N AND CLASS
8 AWG SOLID OR STRANDED	NOT APPLICABLE

STAMP AMP 8* APPROX AS SHOWN



SUPERSEDED BY 8-33462-1	-25	LOOSE PIECE, BAG	8-33462-5
	100	LOOSE PIECE, BOX	8-33462-1
	1500	MOUNTED ON TAPE, REEL	2-33462-1
	1000	LOOSE PIECE, BOX	33462-1
	-	LOOSE PIECE	33462
QTY		PACKAGE TYPE	PART NO

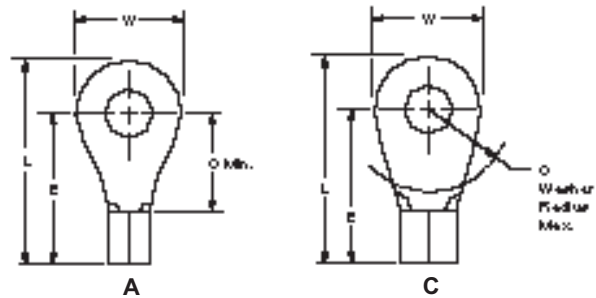
AMP INCORPORATED CUSTOMER SERVICE SYSTEMS		MAX RECOMMENDED OPERATING TEMPERATURE: 170° C MAX
FOR ADDITIONAL PRODUCT INFORMATION OR COPIES OF DRAWINGS AND TECHNICAL DOCUMENTS	PRODUCT INFORMATION CENTER 1-800-522-6752	VOLTAGE RATING: NOT APPLICABLE
FOR APPLICATION TOOLING INFORMATION	TOOLING ASSISTANCE CENTER 1-800-722-1111	WIRE CROSS SECTIONAL AREA RANGE: 6.64-10.5mm ² [13,100-20,800] CIR MILS SOLID OR STRANDED
FOR ORDER ENTRY	1-800-526-5142	THIS DRAWING IS A CONTROLLED DOCUMENT FOR AMP INCORPORATED. IT IS SUBJECT TO CHANGE AND THE CONTROLLING ENGINEERING ORGANIZATION SHOULD BE CONTACTED FOR THE LATEST REVISION.

THIS DRAWING IS A CONTROLLED DOCUMENT.		DWN TA BRINKMAN 3-24-93	TE Connectivity
DIMENSIONS: mm [INCHES]		CHK DA PATTERSON 3-24-93	
TOLERANCES UNLESS OTHERWISE SPECIFIED:		APVD DE MILLER 3-24-93	NAME TERMINAL, RING TONGUE, SOLISTRAND TM
0 PLC ± - 1 PLC ± - 2 PLC ± - 3 PLC ± - 4 PLC ± - ANGLES ± ± -		PRODUCT SPEC APPLICATION SPEC	SIZE A2
MATERIAL COPPER PER ASTM B-152 ANNEALED	FINISH TIN PLATE 0.00254[.000100] MIN THK PER MIL-T-10727	WEIGHT -	CAGE CODE 00779
		CUSTOMER DRAWING	DRAWING NO G-33462
		SCALE 4:1	RESTRICTED TO -
		SHEET 1 OF 1	REV H1

Ring Tongue Terminals (Continued)

Wire Size Range
AWG 12 to 8,
CMA 5,180 to 20,800
[2.62 to 10.5 mm²]

Material
Terminal Body — Copper per
ASTM B-152
Plating — Tin per MIL-T-10727



SOLISTRAND and Budget
Terminals and Splices

Wire Size Circular Mills [mm ²]	Stud Size	Style	Dimensions				Material Thickness Max.	Wire Barrel I.D. Min.		Part Numbers		
			L Max.	E Max.	C	W		Solistrand	Budget	Solistrand	Budget	
12-10 5,180-13,100 [2.62-6.64]	3/8	A	1.098 27.89	.799 20.29	.531 13.49	.593 15.06	.042 1.07	.129 3.28	.134 3.40	33220* 1-33220-2 ³	30972	
		A	1.271 32.28	.893 22.68	.625 15.88	.750 19.05	.042 1.07	.129 3.28	.134 3.40	322242	34833	
	1/2 M12	A	1.102 27.99	.742 18.85	.474 12.04	.715 18.16	.042 1.07	—	.134 3.40	—	52269-1	
		A	1.271 32.28	.893 22.68	.625 15.88	.750 19.05	.042 1.07	.129 3.28	.134 3.40	35135 2-35135-2 ³	34834	
	5/8 M16	A	1.896 48.16	1.268 32.21	1.000 25.40	1.250 31.75	.042 1.07	.129 3.28	.134 3.40	320763	320760	
		A	1.896 48.16	1.268 32.21	1.000 25.40	1.250 31.75	.042 1.07	.129 3.28	.134 3.40	320764	320761	
	3/4	A	1.896 48.16	1.268 32.21	1.000 25.40	1.250 31.75	.042 1.07	.129 3.28	.134 3.40	320765	320762	
		7/8 M22	A	1.896 48.16	1.268 32.21	1.000 25.40	1.250 31.75	.042 1.07	.129 3.28	—	1-320765-1	—
	8 13,100-20,800 [6.64-10.5]	1	A	1.896 48.16	1.268 32.21	1.000 25.40	1.250 31.75	.042 1.07	.129 3.28	—	1-320765-0	—
			C	.949 24.10	.743 18.87	.359 9.12	.406 10.31	.051 1.30	.172 4.37	—	324061*	—
8 M4		C	.933 23.70	.696 17.68	.359 9.12	.469 11.91	.051 1.30	.172 4.37	—	32996*	—	
		C	.933 23.70	.696 17.68	.359 9.12	.469 11.91	.051 1.30	.172 4.37	—	33460* 2-33460-2* ¹ 2-33460-3* ²	—	
10		C	.949 24.10	.743 18.87	.359 9.12	.406 10.31	.051 1.30	.172 4.37	—	31807 2-31807-2* ²	—	
		C	.933 23.70	.696 17.68	.359 9.12	.469 11.91	.051 1.30	.172 4.37	—	33461* 2-33461-2* ¹ 2-33461-3* ²	—	
1/4 M6		C	.933 23.70	.696 17.68	.359 9.12	.469 11.91	.051 1.30	.172 4.37	—	35247*	—	
		A	1.168 29.67	.868 22.05	.531 13.49	.594 15.09	.051 1.30	.172 4.37	—	33462* 2-33462-1 ²	—	
5/16 M8		A	1.074 27.28	.790 20.07	.406 10.31	.562 14.27	.051 1.30	.172 4.37	—	31808*	—	
		C	.933 23.70	.696 17.68	.359 9.12	.469 11.91	.051 1.30	.172 4.37	—	55991-1 55991-2	—	
3/8	A	1.168 29.67	.868 22.05	.531 13.49	.594 15.09	.051 1.30	.172 4.37	—	33463*	—		
	A	1.965 49.91	1.337 33.96	1.000 25.40	1.250 31.75	.051 1.30	.172 4.37	—	36499	—		
1/2 M12	A	1.965 49.91	1.337 33.96	1.000 25.40	1.250 31.75	.051 1.30	.172 4.37	—	35664*	—		
	A	1.965 49.91	1.337 33.96	1.000 25.40	1.250 31.75	.051 1.30	.172 4.37	—	35665	—		
5/8 M16	A	1.965 49.91	1.337 33.96	1.000 25.40	1.250 31.75	.051 1.30	.172 4.37	—	35666	—		
	A	1.965 49.91	1.337 33.96	1.000 25.40	1.250 31.75	.051 1.30	.172 4.37	—	35666	—		

Note: Part numbers are shown as loose piece over tape mounted product.
 *Part numbers are available in small quantity packages.
¹Requires a 69875 standard TAPETRONIC machine for application.
²Requires a 68250-1 Heavy Duty TAPETRONIC machine for application.
³Requires a 68250-1 Heavy Duty TAPETRONIC and 68242-2 die set for application.