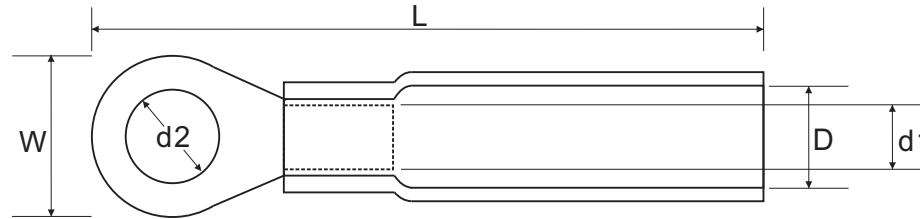


Heat Shrinkable Ring Type Crimp Connectors



Shrinking Temperature: $\geq 150^{\circ}\text{C}$
 Operating Temperature: $-40^{\circ}\text{C} \sim 120^{\circ}\text{C}$
 Shrinking Ratio: 3:1
 Terminal Body: Copper
 Insulation: PE
 Plating: Tin

Best.-Nr.	Typ	Wire Range mm ² /Awg	STUD SIZE	DIMENSION					COLOR
				d2ø (mm)	W (mm)	L (mm)	Dø (mm)	d1ø (mm)	
				±0.1	±0.1	±1.0	±0.3	±0.2	
73 63 86	221032R	0.5~1.5mm ² 22-16AWG	M3	3.2	5.7	26.5	4.8	1.7	RED
73 64 12	221037R		M3.5	3.7	6.6	28.0	4.8	1.7	
73 91 69	221143R		M4	4.3	6.6	28.0	4.8	1.7	
73 92 10	221153R		M5	5.3	8.0	29.5	4.8	1.7	
73 92 50	112064R		M6	6.4	9.8	32.0	4.8	1.7	
73 92 89	221084R		M8	8.4	11.6	35.0	4.8	1.7	
73 93 28	221010R		M10	10.5	13.6	43.0	4.8	1.7	
73 64 39	222037R	1.5~2.5mm ² 16-14AWG	M3.5	3.7	6.6	26.5	5.8	2.3	BLUE
73 91 82	222143R		M4	4.3	6.6	30.0	5.8	2.3	
73 92 23	222053R		M5	5.3	8.5	31.0	5.8	2.3	
73 92 64	222064R		M6	6.4	12.0	35.5	5.8	2.3	
73 93 01	222084R		M8	8.4	12.0	35.5	5.8	2.3	
73 93 42	222010R		M10	10.5	13.6	39.0	5.8	2.3	
73 91 96	223043R	4~6mm ² 10-12AWG	M4	4.3	7.2	31.0	6.8	3.4	YELLOW
73 82 37	223053R		M5	5.3	9.5	35.0	6.8	3.4	
73 92 76	223064R		M6	6.4	12.0	41.0	6.8	3.4	
73 93 14	223084R		M8	8.4	12.0	43.0	6.8	3.4	
73 93 54	223010R		M10	10.5	15.0	43.0	6.8	3.4	