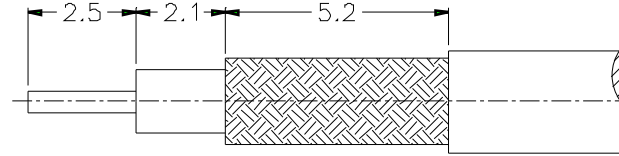
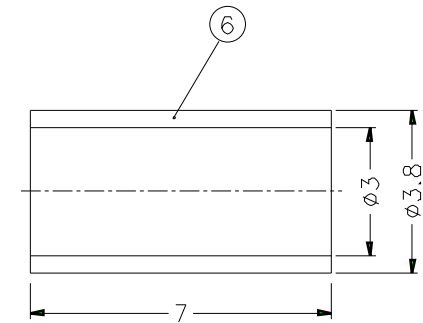
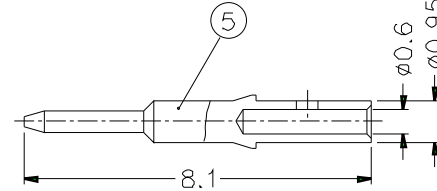
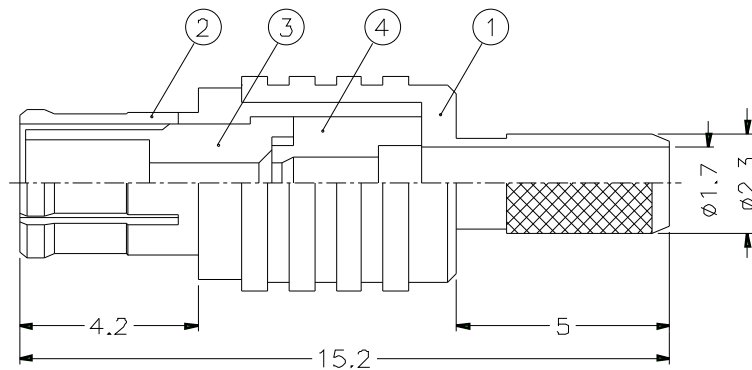


REVISIONS		
ISS	ZONE	DESCRIPTION\PER REQUEST\DATE



RECOMMENDED
CABLE STRIPPING DIM'S



- NOTES: FINISH (PLATING THICKNESS IN MICRO-INCHES)
1. BRASS PER QQ-B-626
 2. GOLD PL. 3 MIN. THICK OVER NICKEL PL. 100 MIN. THICK OVER COPPER STRIKE
 3. BERYLLIUM COPPER PER QQ-C-530
 4. GOLD PL. 30 MIN. THICK OVER NICKEL PL. 100 MIN. THICK OVER COPPER STRIKE
 5. TEFLON MIL-P-19468

1. CRIMPED FERRULE
HEX CRIMP SIZE .128"
2. CRIMPED CONTACT PIN
SQ. CRIMP SIZE 0.7(mm)

6	FERRULE	COPPER	NOTE 2	1	FR-38/3X7C	DIMENSIONS ARE IN MILLIMETERS				PART NO.	<h1 style="text-align: center;">Amphenol</h1> <p style="text-align: center;">TITLE MCX CRIMP PLUG (FOR RG-174/U,188A/U,316/U)</p> <p style="text-align: center;">DRAWING NO. KJ-MCX1121A1-3GT30G-316U-50</p> <p style="text-align: center;">ITEM NO.</p>	
5	CONTACT PIN	NOTE 1	NOTE 4	1	MCX1121A1-5-095/06	UNLESS OTHERWISE SPECIFIED TOLERANCES				APPROVED		DATE
4	INSULATOR	NOTE 5	NATURAL	1	MCX1121A1-4	0.5-6 = ±0.2				CHECKED		DATE
3	INSULATOR	NOTE 5	NATURAL	1	MCX1121A1-3	6-30 = ±0.4				DRAWN		DATE
2	BODY	NOTE 3	NOTE 2	1	MCX1121A1-2-B	30-120 = ±0.6						
1	HOUSING	NOTE 1	NOTE 2	1	MCX1121A1-1-23/17	120-315 = ±1						
						315-1000 = ±1.6						
						1000-2000 = ±2.4						
NO.	DESCRIPTION	MATERIAL	FINISH	Q'TY	DRAWING NO.	SCALE	6/1	ISSUE	A	FILE NO.		

1	2	3	4	5	6	7	8
---	---	---	---	---	---	---	---