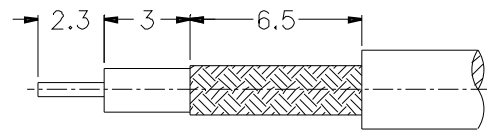
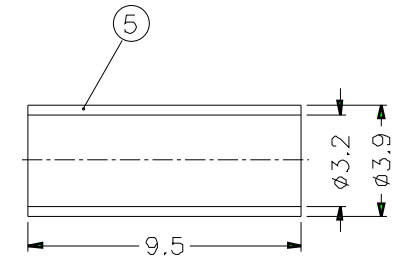
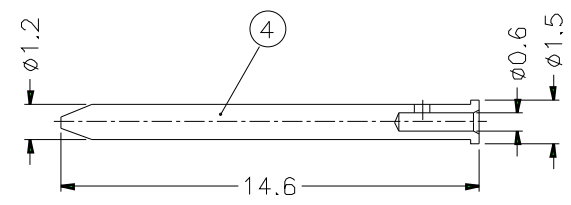
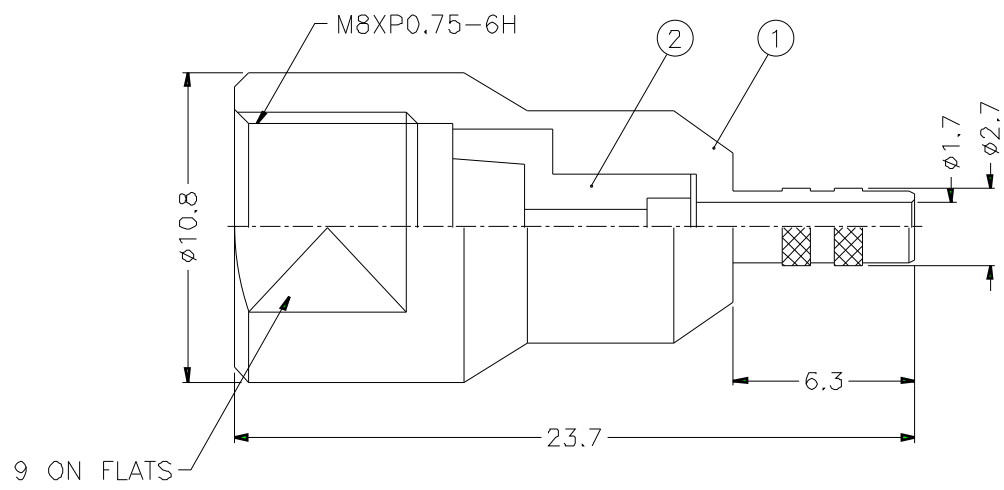


1			2			3			4			5			6			7			8		
REVISIONS																							
ISS	ZONE	DESCRIPTION\PER REQUEST\DATE																					



RECOMMENDED  
CABLE STRIPPING DIM'S



- 1. CRIMPED FERRULE  
HEX CRIMP SIZE .128"
- 2. CONTACT PIN TO SOLDER

NOTES: FINISH (PLATING THICKNESS IN MICRO-INCHES)  
 1. BRASS PER QQ-B-626  
 2. NICKEL PL. 100 MIN. THICK OVER COPPER STRIKE  
 3. GOLD PL. 3 MIN THICK OVER NICKEL PL. 100 MIN THICK OVER COPPER STRIKE

DIMENSIONS ARE IN MILLIMETERS										PART NO. FME1121B4-ND3G-5-50		<b>Amphenol</b>	
UNLESS OTHERWISE SPECIFIED TOLERANCES										APPROVED			
0.5-6 = $\pm 0.2$												10-11-01'	
6-30 = $\pm 0.4$										CHECKED		DATE	
30-120 = $\pm 0.6$												10-11-01'	
120-315 = $\pm 1$										DRAWN		DATE	
315-1000 = $\pm 1.6$												10-11-01'	
1000-2000 = $\pm 2.4$										FILE NO.			
4	FERRULE	NOTE 1	NOTE 2	1	FR-39/32X95	SCALE		4/1	ISSUE	A	TITLE FME CRIMP PLUG (FOR RG-174/U,188A/U,316/U)		
3	CONTACT PIN	NOTE 1	NOTE 3	1	FME1121A4-4-15/06						DRAWING NO. KJ-FME1121B4-ND3G-316U-50		
2	INSULATOR	DELTRIN	NATURAL	1	FME1121B4-2-50						ITEM NO.		
1	BODY	NOTE 1	NOTE 2	1	FME1121A4-1-27/17								
NO.	DESCRIPTION	MATERIAL	FINISH	Q'TY	DRAWING NO.								