

Male

Product Specification

Material

Insulator :Glass-Filled Thermoplastic PBT,UL94V-0 rated ,Black  
 Contact : Copper alloy, Gold flash full gold  
 Shell : Steel,100u" Tin Over 50u" min Copper  
 Clinch Nut : Brass, 100u" min Nickel Plated.  
 Boardlock :Brass, 100u" min Nickel Plated.  
 Screwlock :Brass, 100u" min Nickel Plated.

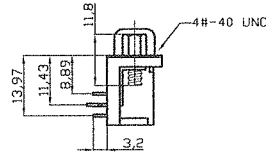
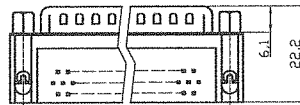
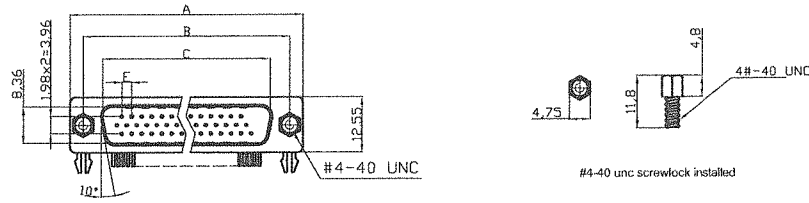
Electrical

Contact Resistance :20 milliohms Max at 1 AMP DC.  
 Insulation Resistance :1000 magohms at 500 VDC  
 Dielectric Withstanding Voltage : 1000 VAC/rms 60Hz for 1 minute  
 Current Rating :3 AMP  
 Volatge Rating :250 VAC/rms 60Hz  
 Operating Temperature : -20°C ~ +85°C

Order Code:

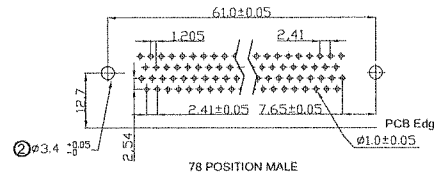
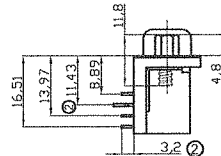
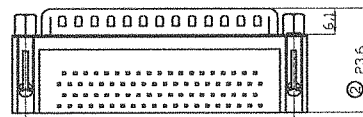
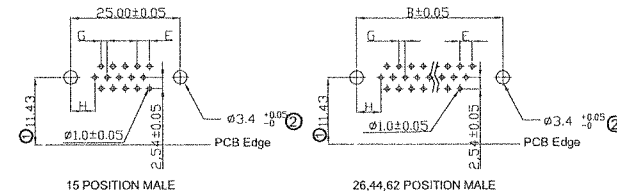
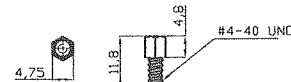
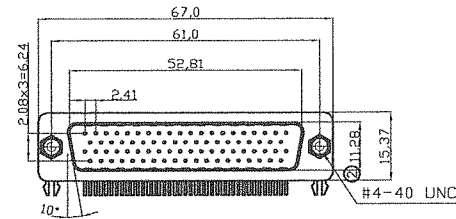
A-HDx xx A-KG/T

Contact style:  
 F - Female  
 S - Male  
 No. of Contacts  
 15 / 26 / 44 / 62  
 Standard: Quality class III



Dimensions

Positions	A	B	C	E
15	30.81	24.99	16.92	2.29
26	39.20	33.30	25.25	2.29
44	53.05	47.04	38.96	2.29
62	69.40	63.50	55.42	2.41



Positions	G	H
15MF	1.145	7.04
26MF	1.145	6.88
44MF	1.145	6.88
62MF	1.205	7.00

78 Positions

RoHS compliant  
 Unit: mm

Scale	Free				Date	Name	Customer-No.
TOLERANCE					Drawn	15.08.2012	Lucas
X.	±0.38				Approved	27.02.2015	Ray
X.X	±0.25						
X.XX	±0.13	②	Update the dimension	27.02.2015	Winnie		
DIM	TOL	①	Add the dimension of PCB edge	19.02.2014	Ray		
X.°	±3°	③	Drawn	15.08.2012	Lucas		
X.X°	±1.0°						
Angle	TOL	Id.	Modification	Date	Name		

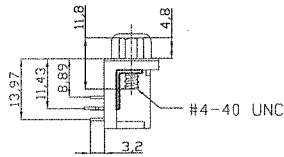
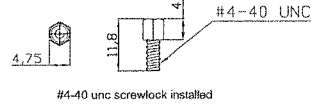
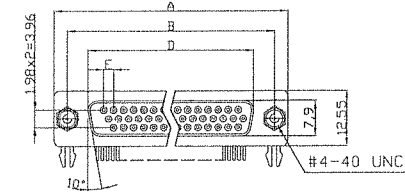


ASSMANN WSW-No.  
**A-HDx xx A-KG/T**

Drawing-No.  
**ASS 4897 CO** rev02

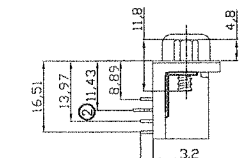
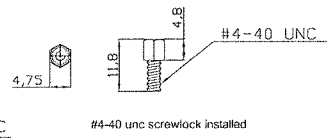
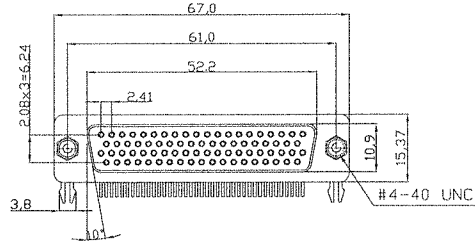
Replace Sheet 1/3

**Female**



Dimensions

Positions	A	B	D	E
15	30.81	24.99	16.33	2.29
26	39.20	33.30	24.70	2.29
44	53.05	47.04	38.40	2.29
62	69.40	63.50	54.80	2.41



78 Positions

**Product Specification**

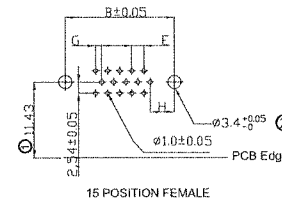
**Material**

Insulator :Glass-Filled Thermoplastic PBT,UL94V-0 rated ,Black  
 Contact :Copper alloy, Gold flash full gold  
 Shell :Steel,100u" Tin Over 50u" min Copper  
 Clinch Nut: Brass, 100u" min Nickel Plated.  
 Boardlock :Brass, 100u" min Nickel Plated.  
 Screwlock :Brass, 100u" min Nickel Plated.

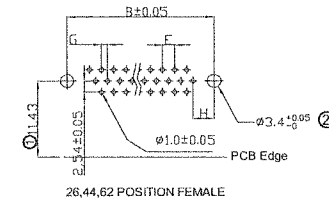
**Electrical**

Contact Resistance :20 milliohms Max at 1 AMP DC.  
 Insulation Resistance :1000 magohms at 500 VDC  
 Dielectric Withstanding Voltage :1000 VAC/rms 60Hz for 1 minute  
 Current Rating :3 AMP  
 Volatge Rating :250 VAC/rms 60Hz  
 OPERATING TEMPERATURE:-20°C+85°C

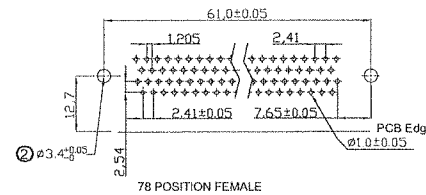
**P.C.B LAYOUT PATTERN**



15 POSITION FEMALE



26,44,62 POSITION FEMALE

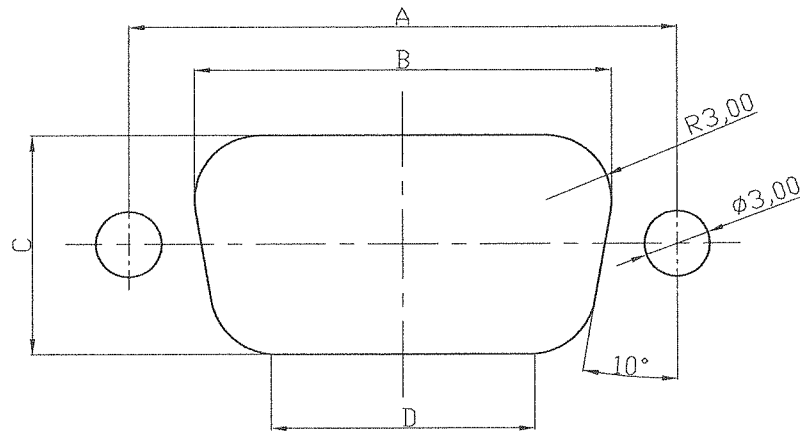


78 POSITION FEMALE

Positions	G	H
15M/F	1.145	7.04
26M/F	1.145	6.88
44M/F	1.145	6.88
62M/F	1.205	7.00

**RoHS compliant**  
Unit: mm

Scale	Free				Date	Name	Customer-No.
TOLERANCE					Drawn	15.08.2012	Lucas
X.	±0.38				Approved	27.02.2015	Ray
X.X	±0.25						ASSMANN WSW-No. <b>A-HDx xx A-KG/T</b>
X.XX	±0.13	②	Update the dimension	27.02.2015	Winnie		Drawing-No.
DIM	TOL	①	Add the dimension of PCB edge	19.02.2014	Ray	<b>ASSMANN</b> WSW/ components	<b>ASS 4897 CO</b>
X.°	±3°	①	Drawn	15.08.2012	Lucas		rev02
X.X°	±1.0°	①					Replace
Angle	TOL	Id.	Modification	Date	Name		Sheet 2/3



Recommended Panel Cut-Out

POSITION	A	B	C	D
15	24.99	20.47	10.67	12.01
26	33.30	28.80	10.67	20.35
44	47.04	42.52	10.67	34.06
62	63.50	59.08	10.67	50.62
78	61.00	56.34	14.10	46.90

**RoHS compliant**  
Unit: mm

Scale	Free				Date	Name	Customer-No.
TOLERANCE					Drawn	15.08.2012	Lucas
X.	±0.15				Approved	27.02.2015	Ray
X.X	±0.10						ASSMANN WSW-No. <b>A-HDx xx A-KG/T</b>
X.XX	±0.05	②	Update the dimension	27.02.2015	Winnie		Drawing-No.
DIM	TOL	①	Add the dimension of PCB edge	19.02.2014	Ray	<b>ASSMANN</b> WSW components	<b>ASS 4897 CO</b>
X.°	±3°	④	Drawn	15.08.2012	Lucas		rev02
X.X°	±1.0°	④	Drawn	15.08.2012	Lucas		Sheet 3/3
Angle	TOL	Id.	Modification	Date	Name	Replace	