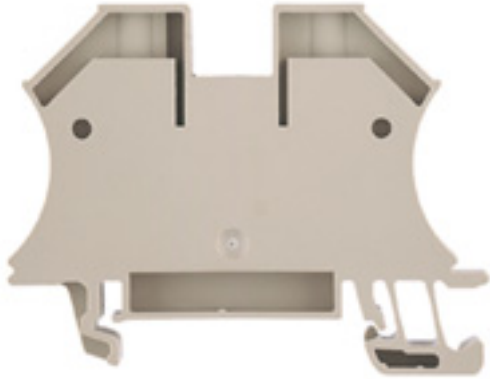


**W-Series  
WDU 16N**

**Weidmüller Interface GmbH & Co. KG**  
Klingenbergstraße 16  
D-32758 Detmold  
Germany  
Fon: +49 5231 14-0  
Fax: +49 5231 14-292083  
www.weidmueller.com



The versatile and extensive range of products - from 0.05 mm<sup>2</sup> to 300 mm<sup>2</sup> - means that you have diverse options for your applications at your disposal.  
Hardened steel for mechanical strength and high-quality tinned copper for optimum conductivity. All materials comply with RoHS requirements and have been tested to current environment guidelines.

**General ordering data**

Type	WDU 16N
Order No.	<a href="#">1036100000</a>
Version	W-Series, Feed-through terminal, Rated cross-section: 16 mm <sup>2</sup> , Screw connection, Direct mounting, Beige
GTIN (EAN)	4008190273217
Qty.	50 pc(s).

## W-Series WDU 16N

**Weidmüller Interface GmbH & Co. KG**  
 Klingenbergstraße 16  
 D-32758 Detmold  
 Germany  
 Fon: +49 5231 14-0  
 Fax: +49 5231 14-292083  
 www.weidmueller.com

## Technische Daten

### Dimensions and weights

Length	60 mm	Width	12 mm
Height	46.5 mm	Height of lowest version	47 mm
Weight	24.85 g	Net weight	24.08 g

### Temperatures

Operating temperature		Storage temperature	
Continuous operating temp., min.	-50 °C	Continuous operating temp., max.	120 °C

### 2 clampable wires (H05V/H07V) same cross-section (rated connection)

Wire connection cross section, finely stranded, two clampable wires, min.	1.5 mm <sup>2</sup>	Wire cross-section, finely stranded, two clampable wires, max.	4 mm <sup>2</sup>
Wire connection cross section, finely stranded with wire-end ferrules DIN 46228/1, 2 clampable wires, min.	1.5 mm <sup>2</sup>	Wire connection cross section, finely stranded with wire-end ferrules DIN 46228/1, 2 clampable wires, max.	4 mm <sup>2</sup>

### Additional technical data

Explosion-tested version	No	Installation advice	Direct mounting
Number of similar terminals	1	Open sides	closed
Type of mounting	Snap-on	Version	Screw connection, for screwable cross-connection

### CSA ratings data

Certificate No. (CSA)	200039-1057876	Voltage size C (CSA)	300 V
Voltage size D (CSA)	600 V	Current size C (CSA)	70 A
Current size D (CSA)	5 A	Wire cross section max. (CSA)	6 AWG
Wire cross section min. (CSA)	14 AWG		

### Clampable wires (rated connection)

Type of connection	Screw connection	Stripping length	12 mm
Blade size	1.0 x 5.5 mm	Connection direction	on side
Number of connections	2	Clamping range, rated connection, min.	1.5 mm <sup>2</sup>
Clamping range, rated connection, max.	25 mm <sup>2</sup>	Clamping screw	M 4
Tightening torque, min.	1.2 Nm	Tightening torque, max.	2.4 Nm
Torque level with DMS electric screwdriver	4	Gauge to IEC 60947-1	B7
Wire connection cross section, solid core, max. rated connection	1.5 mm <sup>2</sup>	Wire connection cross section, solid core max. rated connection	16 mm <sup>2</sup>
Wire connection cross section, stranded, rated connection, min.	1.5 mm <sup>2</sup>	Wire connection cross section, stranded, rated connection, max.	25 mm <sup>2</sup>
Wire connection cross section, finely stranded, max.	16 mm <sup>2</sup>	Wire connection cross-section, finely stranded, min.	1.5 mm <sup>2</sup>
Wire connection cross section, finely stranded with wire-end ferrules DIN 46228/1, rated connection, min.	1.5 mm <sup>2</sup>	Wire connection cross section, finely stranded with wire-end ferrules DIN 46228/1, rated connection, max.	16 mm <sup>2</sup>
Cross-section for connected conductor, finely stranded with wire-end ferrules and plastic collars DIN 46228/4, rated connection, min.	1.5 mm <sup>2</sup>	Wire connection cross-section, finely stranded with wire-end ferrules and plastic collars DIN 46228/4, rated connection, max.	16 mm <sup>2</sup>
Wire connection cross section AWG, min.	AWG 14	Wire connection cross section AWG, max.	AWG 6

Erstellungs-Datum December 13, 2013 11:45:08 AM CET

## W-Series WDU 16N

**Weidmüller Interface GmbH & Co. KG**  
 Klingenbergstraße 16  
 D-32758 Detmold  
 Germany  
 Fon: +49 5231 14-0  
 Fax: +49 5231 14-292083  
 www.weidmueller.com

## Technische Daten

### Rated data

Rated cross-section	16 mm <sup>2</sup>	Rated voltage	690 V
Rated impulse withstand voltage	8 kV	Rated current	76 A
Current at maximum wires	101 A	Standards	IEC 60947-7-1
Pollution severity	3		

### UL ratings data

Certificate No. (UR)	E60693	Voltage size B (UR)	600 V
Voltage size C (UR)	600 V	Current size B (UR)	70 A
Current size C (UR)	70 A	Conductor size Factory wiring max. (UR)	6 AWG
Conductor size Factory wiring min. (UR)	14 AWG	Conductor size Field wiring max. (UR)	6 AWG

### Material data

Material	Wemid	Colour	Beige
UL 94 flammability rating	V-0		

### System specifications

Product family	W-Series	Type of connection	Screw connection
Connection direction	on side	Number of levels	1
Number of connections	2	No. of clamping points per level	2
Levels cross-connected internally	No	End cover plate required	No

### Classifications

ETIM 3.0	EC000897	UNSPSC	30-21-18-11
eClass 5.1	27-14-11-20	eClass 6.2	27-14-11-20
eClass 7.1	27-14-11-20		

### Product information

Descriptive text ordering data	1000 VDC rated voltage tested.
Descriptive text technical data	AWG 6/7 and H07V-R25 tighten with a tightening torque of 1.5 Nm.
Descriptive text accessories	Socket and test plug, see section "W-series Accessories".

### Approvals

Approvals



ROHS Conform

**Datenblatt**

**W-Series**  
**WDU 16N**

**Weidmüller Interface GmbH & Co. KG**  
Klingenbergstraße 16  
D-32758 Detmold  
Germany  
Fon: +49 5231 14-0  
Fax: +49 5231 14-292083  
[www.weidmueller.com](http://www.weidmueller.com)

**Zeichnungen**

