

W-Series
WDU 70N/35

Weidmüller Interface GmbH & Co. KG
 Klingenbergstraße 16
 D-32758 Detmold
 Germany
 Fon: +49 5231 14-0
 Fax: +49 5231 14-292083
 www.weidmueller.com



The versatile and extensive range of products - from 0.05 mm² to 300 mm² - means that you have diverse options for your applications at your disposal. Hardened steel for mechanical strength and high-quality tinned copper for optimum conductivity. All materials comply with RoHS requirements and have been tested to current environment guidelines.

General ordering data

Order No.	9512190000
Type	WDU 70N/35
Version	W-Series, Feed-through terminal, Rated cross-section: 70 mm ² , Screw connection, Direct mounting, Dark Beige
GTIN (EAN)	4008190403874
Qty.	10 pc(s).

**W-Series
WDU 70N/35**

Weidmüller Interface GmbH & Co. KG
 Klingenbergstraße 16
 D-32758 Detmold
 Germany
 Fon: +49 5231 14-0
 Fax: +49 5231 14-292083
 www.weidmueller.com

Technical data
Dimensions and weights

Length	75 mm	Width	20.5 mm
Height	85 mm	Height of lowest version	86 mm
Weight	130.8 g	Net weight	119.233 g

Temperatures

Operating temperature		Storage temperature	
Continuous operating temp., min.	-50 °C	Continuous operating temp., max.	120 °C

Rated data IECEx/ATEX

Certificate No. (ATEX)	KEMA98ATEX1683U	ATEX certificate	KEMA98ATEX1683U_d.pdf
ATEX certificate	KEMA98ATEX1683U_e.pdf	IEC Ex certificate	IECExULD05.0008U_e.pdf
Max. voltage (ATEX)	690 V	Current (ATEX)	167 A
Wire cross section max. (ATEX)	70 mm ²	Voltage, cross-connection	CrossConnectionGuide.pdf
Operating temperature range	For operating temperature range see EC Design Test Certificate / IEC Ex-Certificate of Conformity	Marking EN 60079-7	
Marking ATEX Directive 94/9/EC	II 2 G D		Ex e II

2 clampable wires (H05V/H07V) same cross-section (rated connection)

Cross-section for connected wire, stranded, two clampable wires, min.	10 mm ²	Cross-section for connected wire, stranded, two clampable wires, max.	25 mm ²
Wire connection cross section, finely stranded, two clampable wires, min.	10 mm ²	Wire cross-section, finely stranded, two clampable wires, max.	25 mm ²
Wire connection cross section, finely stranded with wire-end ferrules DIN 46228/1, 2 clampable wires, min.	6 mm ²	Wire connection cross section, finely stranded with wire-end ferrules DIN 46228/1, 2 clampable wires, max.	25 mm ²

Additional technical data

Explosion-tested version	Yes	Installation advice	Direct mounting
Number of similar terminals	1	Open sides	closed
Type of mounting	Snap-on		

CSA ratings data

Certificate No. (CSA)	200039-1057876	Voltage size C (CSA)	600 V
Current size C (CSA)	205 A	Wire cross section max. (CSA)	000 AWG
Wire cross section min. (CSA)	6 AWG		

W-Series
WDU 70N/35

Weidmüller Interface GmbH & Co. KG
 Klingenbergstraße 16
 D-32758 Detmold
 Germany
 Fon: +49 5231 14-0
 Fax: +49 5231 14-292083
 www.weidmueller.com

Technical data**Clampable wires (rated connection)**

Type of connection	Screw connection	Stripping length	22 mm
Blade size	S6 (DIN 6911)	Connection direction	on side
Number of connections	2	Clamping range, rated connection, min.	10 mm ²
Clamping range, rated connection, max.	95 mm ²	Clamping screw	M 8
Tightening torque, min.	6 Nm	Tightening torque, max.	12 Nm
Gauge to IEC 60947-1	B11	Wire connection cross section, solid core, max. rated connection	10 mm ²
Wire connection cross section, solid core max. rated connection	16 mm ²	Wire connection cross section, stranded, rated connection, min.	10 mm ²
Wire connection cross section, stranded, rated connection, max.	95 mm ²	Wire connection cross section, finely stranded, max.	70 mm ²
Wire connection cross-section, finely stranded, min.	10 mm ²	Wire connection cross section, finely stranded with wire-end ferrules DIN 46228/1, rated connection, min.	10 mm ²
Wire connection cross section, finely stranded with wire-end ferrules DIN 46228/1, rated connection, max.	70 mm ²	Cross-section for connected conductor, finely stranded with wire-end ferrules and plastic collars DIN 46228/4, rated connection, min.	10 mm ²
Wire connection cross-section, finely stranded with wire-end ferrules and plastic collars DIN 46228/4, rated connection, max.	70 mm ²	Wire connection cross section AWG, min.	AWG 6
Wire connection cross section AWG, max.	AWG 2/0		

Rated data

Rated cross-section	70 mm ²	Rated voltage	1,000 V
Rated impulse withstand voltage	8 kV	Rated current	192 A
Current at maximum wires	232 A	Standards	IEC 60947-7-1
Pollution severity	3		

Strap connection

Strap 1, min.	3 layers 9 x 0.8	Strap 1, max.	9 layers 9 x 0.8
Strap 2, max.	4 layers 16 x 0.8		

UL ratings data

Certificate No. (cURus)	E60693VOL1SEC75	Conductor size Factory wiring max. (cURus)	000 AWG
Conductor size Factory wiring min. (cURus)	6 AWG	Conductor size Field wiring max. (cURus)	000 AWG
Conductor size Field wiring min. (cURus)	6 AWG	Current size C (cURus)	195 A
Voltage size C (cURus)	600 V		

Material data

Material	Wemid	Colour	Dark Beige
UL 94 flammability rating	V-0		

System specifications

Product family	W-Series	Type of connection	Screw connection
Connection direction	on side	Number of levels	1
Number of connections	2	No. of clamping points per level	2
Levels cross-connected internally	No	End cover plate required	No

Creation date November 19, 2012 2:41:36 PM CET

**W-Series
WDU 70N/35**

Weidmüller Interface GmbH & Co. KG
 Klingenbergstraße 16
 D-32758 Detmold
 Germany
 Fon: +49 5231 14-0
 Fax: +49 5231 14-292083
 www.weidmueller.com

Technical data

Classifications

ETIM 2.0	EC000897	ETIM 3.0	EC000897
UNSPSC	30-21-18-11	eClass 4.1	27-14-11-20
eClass 5.1	27-14-11-20	eClass 6.0	27-14-11-20
eClass 7.0	27-14-11-20		

Product information

Descriptive text ordering data	1000 V UL and CSA for usage groups B and C: can be used with isolating DIN rails and when using WTW-type partitions.
Descriptive text technical data	Copper straps can be used; see online catalogue for possible connections.
Descriptive text accessories	Auxiliary connection for additional conductor "WZAD 70N" 1964830000 (up to 10 mm², 41 A).

Approvals

Approvals

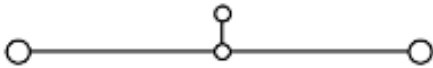


Data sheet...

W-Series
WDU 70N/35

Weidmüller Interface GmbH & Co. KG
Klingenbergstraße 16
D-32758 Detmold
Germany
Fon: +49 5231 14-0
Fax: +49 5231 14-292083
www.weidmueller.com

Drawings



**W-Series
WDU 70N/35**

Weidmüller Interface GmbH & Co. KG
 Klingenbergstraße 16
 D-32758 Detmold
 Germany
 Fon: +49 5231 14-0
 Fax: +49 5231 14-292083
 www.weidmueller.com

Accessories

WZAD

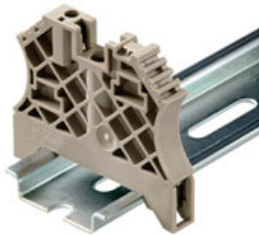


The versatile and extensive range of products - from 0.05 mm² to 300 mm² - means that you have diverse options for your applications at your disposal. Hardened steel for mechanical strength and high-quality tinned copper for optimum conductivity. All materials comply with RoHS requirements and have been tested to current environment guidelines.

General ordering data

Order No.	Type	Version	GTIN (EAN)	Qty.
1964830000	WZAD 70N	W-Series, Accessories, Additional connection	4032248651474	5 pc(s).

for TS 35 terminal rail



Weidmüller's range of products includes end brackets that guarantee a permanent, reliable mounting on the terminal rail and prevent sliding. Versions with and without screws are available. The end brackets include marking options, also for group markers, and also a test plug holder.

General ordering data

Order No.	Type	Version	GTIN (EAN)	Qty.
1059000000	WEW 35/1	Accessories, End bracket	4008190172282	50 pc(s).

**W-Series
WDU 70N/35**

Weidmüller Interface GmbH & Co. KG
 Klingenbergstraße 16
 D-32758 Detmold
 Germany
 Fon: +49 5231 14-0
 Fax: +49 5231 14-292083
 www.weidmueller.com

Accessories

Blank



WS markers are the perfect match for the connectors of the W series. But thanks to their system compatibility the WS tags can also be used with the I series and the Z series. The large areas for printing permit not only long character strings but also multiple lines.

WS markers are ideal for labels with long, bespoke character strings. The tried-and-tested MultiCard format means that printing can be carried out with **laser** printers, **PrintJet, plotters** or the **MC-Mobilo**.

- Can be fitted in strips or singly
- Markers in proven multicard format

General ordering data

Order No.	Type	Version	GTIN (EAN)	Qty.
1609920000	WS 12/6.5 MC NE WS	Terminal markers, MultiCard, 12 x 6.5 mm, Polyamide, Colour: White	4008190203511	540 pc(s).

Blank



The **dekafix (DEK)** marker is the universal marker for all conductor and plug-in connectors as well as for electronics modules. The system is ideal for small groups of consecutive numbers and covers a large range of ready-printed markers.

Being mounted as strips means that they are quickly clipped on in one operation. The printing is legible with good contrast, and is available in five widths.

- Large selection of ready-to-use markers
- In strips for fast installation
- Connector markers are suitable for all Weidmüller conductor connectors
- Available as blank cards, MultiCard or as cards with standard printing

General ordering data

Order No.	Type	Version	GTIN (EAN)	Qty.
1609801044	DEK 5/5 MC-10 NE WS	Terminal markers, MultiCard, 5 x 5 mm, Polyamide, Colour: White	4008190397111	1,000 pc(s).

**W-Series
WDU 70N/35**

Weidmüller Interface GmbH & Co. KG
 Klingenbergstraße 16
 D-32758 Detmold
 Germany
 Fon: +49 5231 14-0
 Fax: +49 5231 14-292083
 www.weidmueller.com

Accessories

WQV 70N



The versatile and extensive range of products - from 0.05 mm² to 300 mm² - means that you have diverse options for your applications at your disposal. Hardened steel for mechanical strength and high-quality tinned copper for optimum conductivity. All materials comply with RoHS requirements and have been tested to current environment guidelines.

General ordering data

Order No.	Type	Version	GTIN (EAN)	Qty.
9512240000	WQV 70N/2	W-Series, Accessories, Cross-connector, For the terminals, No. of poles: 2	4008190403928	5 pc(s).
9512250000	WQV 70N/3	W-Series, Accessories, Cross-connector, For the terminals, No. of poles: 3	4008190403935	5 pc(s).
9531290000	WQV 70N/4	W-Series, Accessories, Cross-connector, For the terminals, No. of poles: 4	4008190351243	5 pc(s).

WAD 20



The versatile and extensive range of products - from 0.05 mm² to 300 mm² - means that you have diverse options for your applications at your disposal. Hardened steel for mechanical strength and high-quality tinned copper for optimum conductivity. All materials comply with RoHS requirements and have been tested to current environment guidelines.

General ordering data

Order No.	Type	Version	GTIN (EAN)	Qty.
9512260000	WAD 20 GE WSD	W-Series, Accessories, Cover, 48.5 x 18 mm, PA 66	4008190403942	10 pc(s).
9512270000	WAD 20 WS	W-Series, Accessories, Cover, 48.5 x 18 mm, PA 66	4008190403959	10 pc(s).