

5

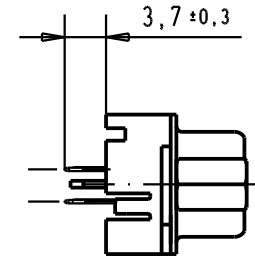
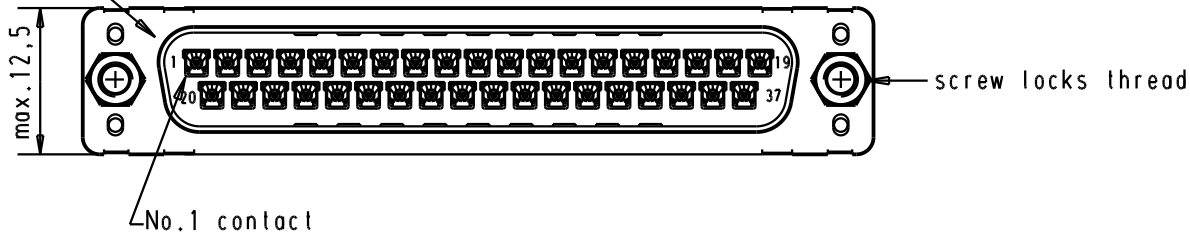
4

3

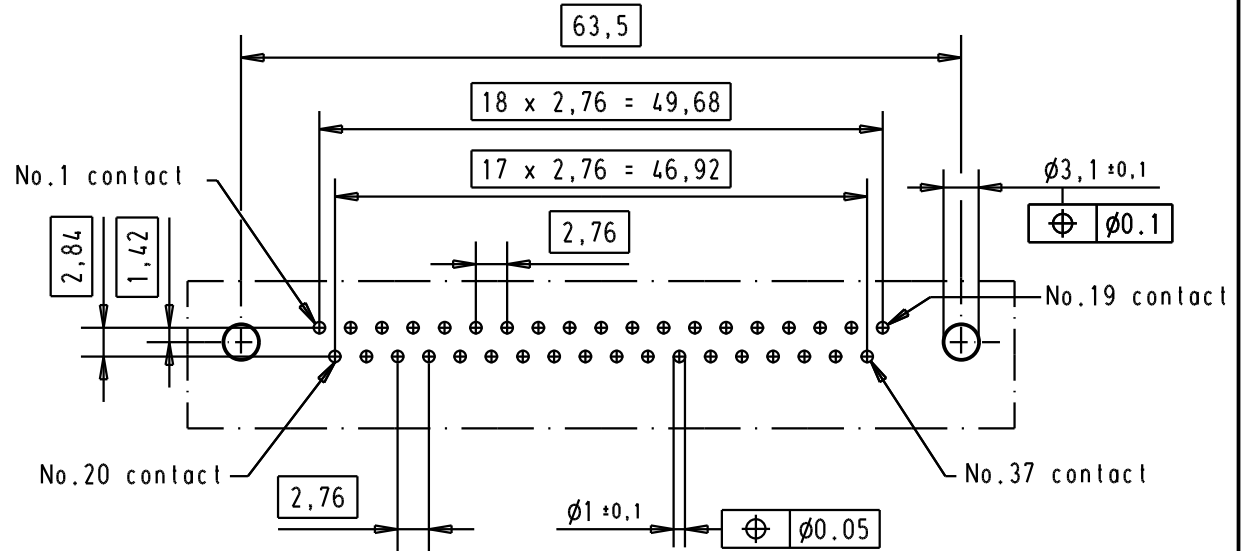
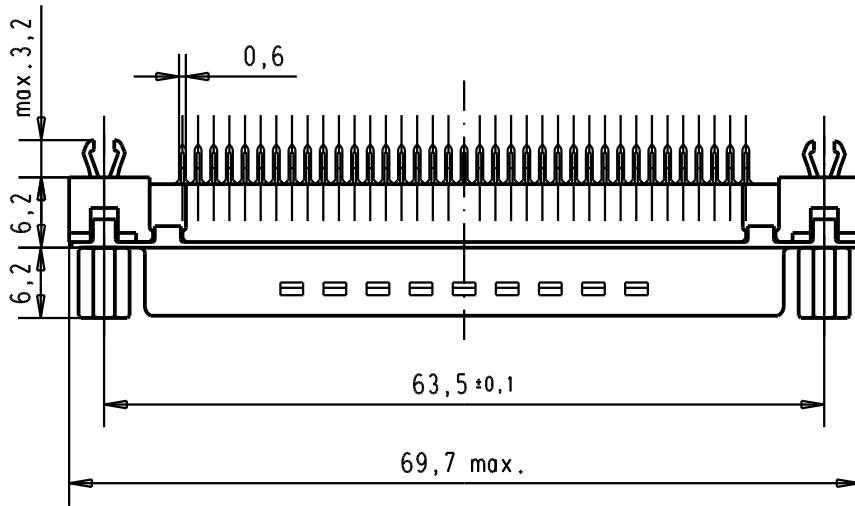
2

1

Mating face according to : MIL-C-24308 / DIN 41652 / CECC 75301-802





Printed board layout component side



Connector retention and insertion forces on the PCB = 25 / 80 newtons

A

09 65 461 3733	M3	1								 All Dim. in mm Orig. Size DIN A 4	D-Sub, 37 poles, male, straight, with solder pins 3.7 screw lock and grounding board lock	Maßstab/ Scale 1.5:1
09 65 461 6733	M3	2										
09 65 461 7733	M3	3										
09 65 461 3713	4-40 UNC	1	31892	22/04/04	JH						TB 09 65 461 x7x3	Blatt/ Page 1
09 65 461 6713	4-40 UNC	2	29723	05-MAR-02	JB							
09 65 461 7713	4-40 UNC	3	29746	07-FEB-02	JB							
Part number	Screw lock thread	Performance level	Mod.	Dat.	Name	HARTING EURL F-95972 Paris				Sub.		