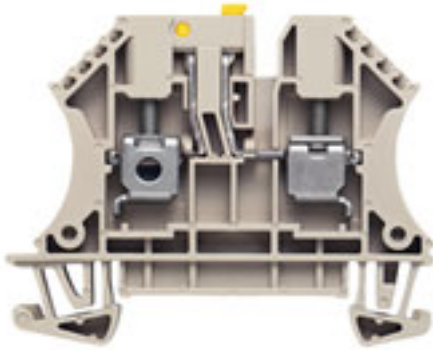


**W-Series**  
**WTR 4**

**Weidmüller Interface GmbH & Co. KG**  
Klingenbergstraße 16  
D-32758 Detmold  
Germany  
Fon: +49 5231 14-0  
Fax: +49 5231 14-292083  
www.weidmueller.com



The versatile and extensive range of products - from 0.05 mm<sup>2</sup> to 300 mm<sup>2</sup> - means that you have diverse options for your applications at your disposal.  
Hardened steel for mechanical strength and high-quality tinned copper for optimum conductivity. All materials comply with RoHS requirements and have been tested to current environment guidelines.

**General ordering data**

Order No.	<a href="#">7910180000</a>
Type	WTR 4
Version	W-Series, Test-disconnect terminal, Rated cross-section: 4 mm <sup>2</sup> , Screw connection
GTIN (EAN)	4008190576882
Qty.	50 pc(s).

**W-Series**  
**WTR 4**

**Weidmüller Interface GmbH & Co. KG**  
 Klingenbergstraße 16  
 D-32758 Detmold  
 Germany  
 Fon: +49 5231 14-0  
 Fax: +49 5231 14-292083  
 www.weidmueller.com

**Technical data**
**Dimensions and weights**

Length	60 mm	Width	6.1 mm
Height	48 mm	Height of lowest version	49 mm
Net weight	11.554 g		

**Temperatures**

Operating temperature		Storage temperature	
Continuous operating temp., min.	-50 °C	Continuous operating temp., max.	120 °C

**2 clampable wires (H05V/H07V) same cross-section (rated connection)**

Wire connection cross section, finely stranded, two clampable wires, min.	0.5 mm <sup>2</sup>	Wire cross-section, finely stranded, two clampable wires, max.	1.5 mm <sup>2</sup>
Wire connection cross section, finely stranded with wire-end ferrules DIN 46228/1, 2 clampable wires, min.	0.5 mm <sup>2</sup>	Wire connection cross section, finely stranded with wire-end ferrules DIN 46228/1, 2 clampable wires, max.	1.5 mm <sup>2</sup>

**Additional technical data**

Explosion-tested version	No	Number of similar terminals	1
Open sides	right	Type of mounting	Snap-on

**CSA ratings data**

Certificate No. (CSA)	200039-1057876	Voltage size C (CSA)	300 V
Current size C (CSA)	10 A	Wire cross section max. (CSA)	10 AWG
Wire cross section min. (CSA)	22 AWG		

**Clampable wires (additional connection)**

Conductor cross-section, flexible plus plastic collar DIN 46228/1, further connection, min.	0.5 mm <sup>2</sup>	Conductor cross-section, flexible plus plastic collar DIN 46228/1, further connection, max.	4 mm <sup>2</sup>
---	---------------------	---	-------------------

**W-Series**  
**WTR 4**

**Weidmüller Interface GmbH & Co. KG**  
 Klingenbergstraße 16  
 D-32758 Detmold  
 Germany  
 Fon: +49 5231 14-0  
 Fax: +49 5231 14-292083  
 www.weidmueller.com

**Technical data****Clampable wires (rated connection)**

Type of connection	Screw connection	Stripping length	13 mm
Blade size	0.6 x 3.5 mm	Connection direction	on side
Number of connections	2	Clamping range, rated connection, min.	0.22 mm <sup>2</sup>
Clamping range, rated connection, max.	6 mm <sup>2</sup>	Clamping screw	M 3
Tightening torque, min.	0.5 Nm	Tightening torque, max.	1 Nm
Torque level with DMS electric screwdriver	2	Gauge to IEC 60947-1	A4
Wire connection cross section, solid core, max. rated connection	0.5 mm <sup>2</sup>	Wire connection cross section, solid core max. rated connection	6 mm <sup>2</sup>
Wire connection cross section, stranded, rated connection, min.	1.5 mm <sup>2</sup>	Wire connection cross section, stranded, rated connection, max.	4 mm <sup>2</sup>
Wire connection cross section, finely stranded, max.	4 mm <sup>2</sup>	Wire connection cross-section, finely stranded, min.	0.5 mm <sup>2</sup>
Wire connection cross section, finely stranded with wire-end ferrules DIN 46228/1, rated connection, min.	0.5 mm <sup>2</sup>	Wire connection cross section, finely stranded with wire-end ferrules DIN 46228/1, rated connection, max.	4 mm <sup>2</sup>
Cross-section for connected conductor, finely stranded with wire-end ferrules and plastic collars DIN 46228/4, rated connection, min.	0.5 mm <sup>2</sup>	Wire connection cross-section, finely stranded with wire-end ferrules and plastic collars DIN 46228/4, rated connection, max.	4 mm <sup>2</sup>
Wire connection cross section AWG, min.	AWG 22	Wire connection cross section AWG, max.	AWG 10

**Disconnect terminals**

Cross-disconnect	without	Integral test socket	No
Slitting	without	Tightening torque, max.	1 Nm
Tightening torque, min.	0.5 Nm	Torque level with DMS electric screwdriver	2

**Rated data**

Rated cross-section	4 mm <sup>2</sup>	Rated voltage	400 V
Rated impulse withstand voltage	6 kV	Rated current	32 A
Current at maximum wires	32 A	Pollution severity	3

**UL ratings data**

Certificate No. (UR)	E60693VOL1SEC38	Voltage size D (UR)	300 V
Current size D (UR)	10 A	Conductor size Factory wiring max. (UR)	10 AWG
Conductor size Factory wiring min. (UR)	22 AWG	Conductor size Field wiring max. (UR)	10 AWG

**Material data**

Material	Wemid	Colour	Dark Beige
UL 94 flammability rating	V-0		

**System specifications**

Product family	W-Series	Type of connection	Screw connection
Connection direction	on side	Number of levels	1
Number of connections	2	No. of clamping points per level	2
Levels cross-connected internally	No	Mounting rail	TS 35
End cover plate required	Yes		

**W-Series  
WTR 4**

**Weidmüller Interface GmbH & Co. KG**  
 Klingenbergstraße 16  
 D-32758 Detmold  
 Germany  
 Fon: +49 5231 14-0  
 Fax: +49 5231 14-292083  
 www.weidmueller.com

**Technical data**

**Classifications**

ETIM 2.0	EC000902	ETIM 3.0	EC000902
UNSPSC	30-21-18-11	eClass 4.1	27-14-11-17
eClass 5.1	27-14-11-26	eClass 6.0	27-14-11-26
eClass 7.0	27-14-11-26		

**Approvals**

Approvals



**Downloads**

STEP [7910180000\\_31505\\_WTR4\\_STP.stp](#)

**Data sheet...**

**W-Series**  
**WTR 4**

**Weidmüller Interface GmbH & Co. KG**  
Klingenbergstraße 16  
D-32758 Detmold  
Germany  
Fon: +49 5231 14-0  
Fax: +49 5231 14-292083  
[www.weidmueller.com](http://www.weidmueller.com)

**Drawings**



**W-Series  
WTR 4**

**Weidmüller Interface GmbH & Co. KG**  
 Klingenbergstraße 16  
 D-32758 Detmold  
 Germany  
 Fon: +49 5231 14-0  
 Fax: +49 5231 14-292083  
 www.weidmueller.com

**Accessories**

**Component Plug**



Weidmüller offers users of modular terminals of the Z-Series a comprehensive range of accessories that render possible appropriate solutions for all - even non-standard - tasks.  
 The accessories must comply with the same quality standards as the modular terminals themselves.

**General ordering data**

Order No.	Type	Version	GTIN (EAN)	Qty.
<a href="#">1833100000</a>	BEST	Accessories, Component plug	4032248501014	50 pc(s).

**Component Plug BEST**

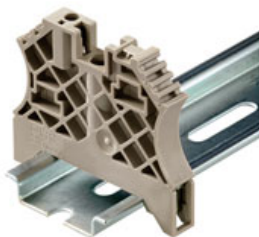


Weidmüller offers users of modular terminals a comprehensive range of accessories that render possible appropriate solutions for all - even non-standard - tasks.

**General ordering data**

Order No.	Type	Version	GTIN (EAN)	Qty.
<a href="#">1878560000</a>	BEST/D	Accessories, Component plug	4032248471492	50 pc(s).
<a href="#">1878570000</a>	BEST/DRBR	Accessories, Component plug	4032248471508	50 pc(s).

**for TS 35 terminal rail**



Weidmüller's range of products includes end brackets that guarantee a permanent, reliable mounting on the terminal rail and prevent sliding. Versions with and without screws are available. The end brackets include marking options, also for group markers, and also a test plug holder.

**General ordering data**

Order No.	Type	Version	GTIN (EAN)	Qty.
<a href="#">1061200000</a>	WEW 35/2	Accessories, End bracket	4008190030230	100 pc(s).

**W-Series  
WTR 4**

**Weidmüller Interface GmbH & Co. KG**  
 Klingenbergstraße 16  
 D-32758 Detmold  
 Germany  
 Fon: +49 5231 14-0  
 Fax: +49 5231 14-292083  
 www.weidmueller.com

**Accessories**
**ZQV 4N**


Weidmüller offers users of modular terminals of the Z-Series a comprehensive range of accessories that render possible appropriate solutions for all - even non-standard - tasks.

The accessories must comply with the same quality standards as the modular terminals themselves.

**General ordering data**

Order No.	Type	Version	GTIN (EAN)	Qty.
<a href="#">1758250000</a>	ZQV 4N/2 GE	Z-series, Accessories, Cross-connector, For the terminals, No. of poles: 2	4032248169795	60 pc(s).
<a href="#">1762620000</a>	ZQV 4N/4 GE	Z-series, Accessories, Cross-connector, For the terminals, No. of poles: 4	4032248169771	60 pc(s).
<a href="#">1758260000</a>	ZQV 4N/10 GE	Z-series, Accessories, Cross-connector, For the terminals, No. of poles: 10	4032248169764	20 pc(s).
<a href="#">1762630000</a>	ZQV 4N/3 GE	Z-series, Accessories, Cross-connector, For the terminals, No. of poles: 3	4032248169788	60 pc(s).

**Screwdrivers**

**Always the right tools:**

Weidmüller screwdrivers are the result of a consistent grip concept which takes into account both the human hand and the different requirements when working. The right blade for every screw - with four different handle sizes

The advantages are obvious:

- User-friendly: ergonomic handle arrangement for effortless working progress
- Optimised connections: compatible blade and perfect handle size for maximum torque
- Reliable: even easier operation for even quicker wiring

The result: efficient, professional working progress.

**General ordering data**

Order No.	Type	Version	GTIN (EAN)	Qty.
<a href="#">9008330000</a>	SDS 0.6X3.5X100	Screwdriver, Blade width (B): 3.5 mm, Blade length: 100 mm, Blade thickness (A): 0.6 mm	4032248056286	1 pc(s).

**W-Series  
WTR 4**

**Weidmüller Interface GmbH & Co. KG**  
 Klingenbergstraße 16  
 D-32758 Detmold  
 Germany  
 Fon: +49 5231 14-0  
 Fax: +49 5231 14-292083  
 www.weidmueller.com

**Accessories**

**WAP 16+35 WTW 2.5-10**



The versatile and extensive range of products - from 0.05 mm<sup>2</sup> to 300 mm<sup>2</sup> - means that you have diverse options for your applications at your disposal. Hardened steel for mechanical strength and high-quality tinned copper for optimum conductivity. All materials comply with RoHS requirements and have been tested to current environment guidelines.

**General ordering data**

Order No.	Type	Version	GTIN (EAN)	Qty.
<a href="#">1050100000</a>	WAP 16+35 WTW 2.5-10	W-Series, Accessories, End plate, Partition plate, Dark Beige, 1.5 mm	4008190079901	20 pc(s).

**Fuse Holder SIHA 3**



Weidmüller offers users of modular terminals a comprehensive range of accessories that render possible appropriate solutions for all - even non-standard - tasks.

**General ordering data**

Order No.	Type	Version	GTIN (EAN)	Qty.
<a href="#">7921570000</a>	SIHA 3/G20/LD 10-36V	Accessories, Fuse holder, Rated cross-section: Plug-in connection, Wemid, Dark Beige, Operating instructions/catalogue	4032248322503	25 pc(s).
<a href="#">7921560000</a>	SIHA 3/G20	Accessories, Fuse holder, Rated cross-section: Plug-in connection, Wemid, Dark Beige, Operating instructions/catalogue	4032248264643	25 pc(s).
<a href="#">7921600000</a>	SIHA 3/G20/LD 140-250V	Accessories, Fuse holder, Rated cross-section: Plug-in connection, Wemid, Dark Beige, Operating instructions/catalogue	4032248322633	25 pc(s).



**W-Series  
WTR 4**

**Weidmüller Interface GmbH & Co. KG**  
 Klingenbergstraße 16  
 D-32758 Detmold  
 Germany  
 Fon: +49 5231 14-0  
 Fax: +49 5231 14-292083  
 www.weidmueller.com

**Accessories**

**Disconnect Plug**



Weidmüller offers users of modular terminals of the Z-Series a comprehensive range of accessories that render possible appropriate solutions for all - even non-standard - tasks.  
 The accessories must comply with the same quality standards as the modular terminals themselves.

**General ordering data**

Order No.	Type	Version	GTIN (EAN)	Qty.
<a href="#">1833090000</a>	TNST	Accessories, Disconnect plug	4032248471485	50 pc(s).

**WAP 2.5-10**



The versatile and extensive range of products - from 0.05 mm<sup>2</sup> to 300 mm<sup>2</sup> - means that you have diverse options for your applications at your disposal.  
 Hardened steel for mechanical strength and high-quality tinned copper for optimum conductivity. All materials comply with RoHS requirements and have been tested to current environment guidelines.

**General ordering data**

Order No.	Type	Version	GTIN (EAN)	Qty.
<a href="#">1050000000</a>	WAP 2.5-10	W-Series, Accessories, End plate, Dark Beige, 1.5 mm	4008190103149	50 pc(s).