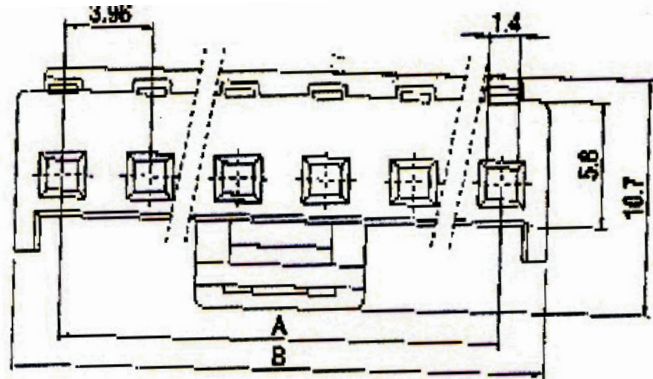


A B C D E F G H

1

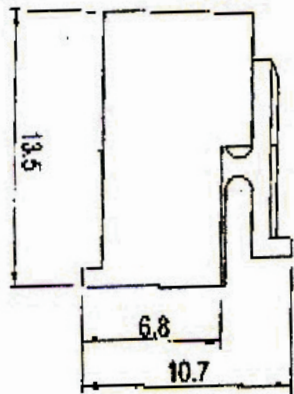
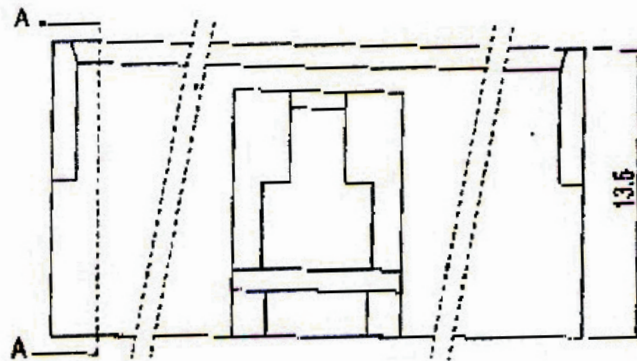


SPECIFICATION

Poles : 6, 12
 Voltage rating : 250VAC / VDC
 Current rating : 7 AMP AC / DC
 Dielectric withstanding : 1,500VAC for 1 min.
 Insulation resistance : 1,000 megohms min.
 Temperature range : -25°C to 85°C

Material : NYLON 66 UL 94V-2
 Housing : Brass / tin plated
 Terminal : Brass / tin plated
 Tolerance : ±0.2

2

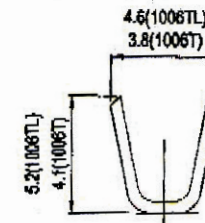
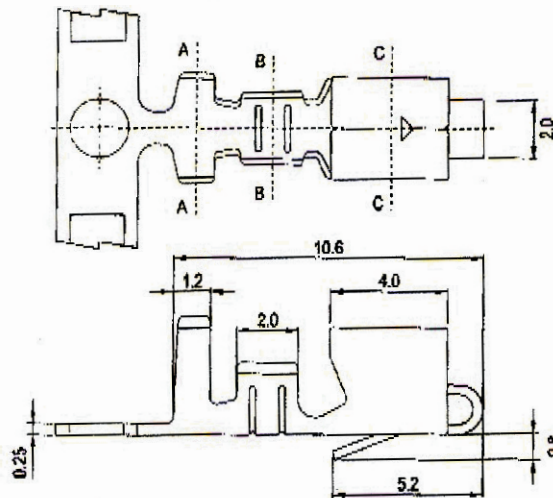


3

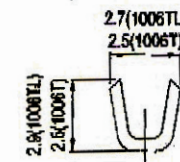
4

5

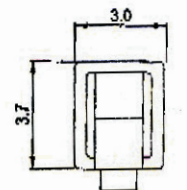
6



Section A-A



Section B-B



Section C-C

Nr. 74 26 60