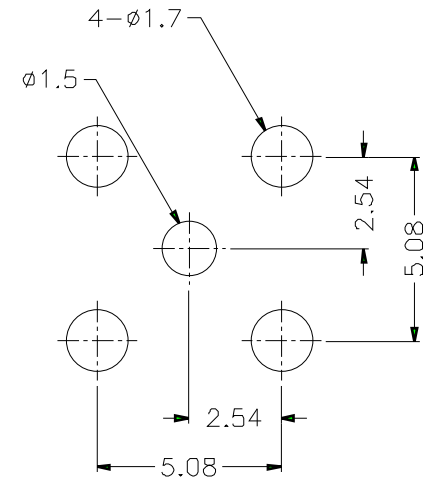
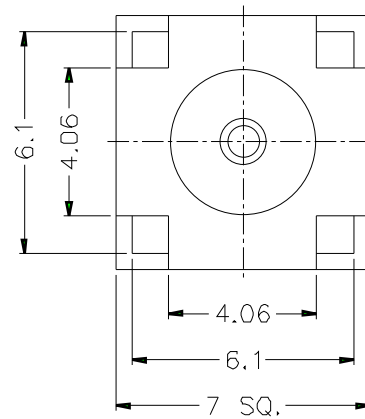
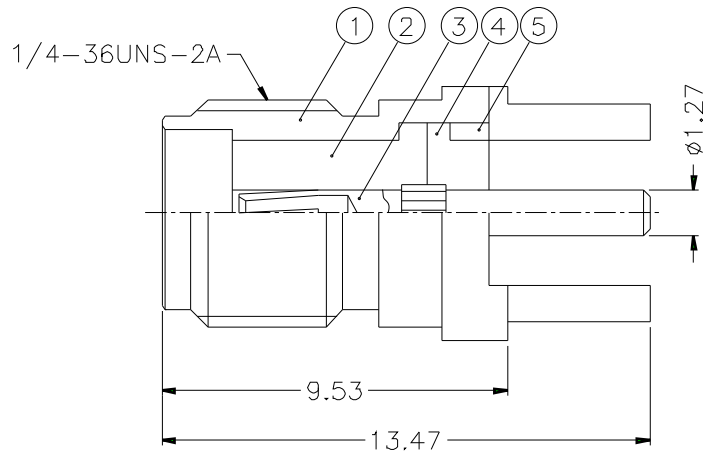


		1		2		3		4		5		6		7		8	
REVISIONS																	
ISS	ZONE	DESCRIPTION\PER REQUEST\DATE															



PCB MOUNTING HOLES

NOTES: FINISH (PLATING THICKNESS IN MICRO-INCHES)

1. BRASS PER QQ-B-626
2. GOLD PL. 3 MIN. THICK OVER NICKEL PL. 100 MIN. THICK OVER COPPER STRIKE
3. BERYLLIUM COPPER PER QQ-C-530
4. GOLD PL. 50 MIN. THICK OVER NICKEL PL. 100 MIN. THICK OVER COPPER STRIKE
5. TEFLON MIL-P-19468

DIMENSIONS ARE IN MILLIMETERS

UNLESS OTHERWISE SPECIFIED TOLERANCES

- 0.5-6 = ±0.2
- 6-30 = ±0.4
- 30-120 = ±0.6
- 120-315 = ±1
- 315-1000 = ±1.6
- 1000-2000 = ±2.4

PART NO.	SMA6251A1-3GT50G-50	
APPROVED	DATE	10-11-01'
CHECKED	DATE	10-11-01'
DRAWN	DATE	10-11-01'
FILE NO.		

<b>Amphenol</b>	
TITLE SMA P.C.B. JACK	
DRAWING NO. KJ-SMA6251A1-3GT50G-50	
ITEM NO.	

5	RING	NOTE 1	NOTE 2	1	SMA7700-5-B
4	INSULATOR	NOTE 5	NATURAL	1	SMA7700-4T-50
3	CONTACT PIN	NOTE 3	NOTE 4	1	SMA7700-3
2	INSULATOR	NOTE 5	NATURAL	1	SMA7530-2T-50-B
1	BODY	NOTE 1	NOTE 2	1	SMA7700-1-B
NO	DESCRIPTION	MATERIAL	FINISH	Q'TY	DRAWING NO.

1	2	3	4	5	6	7	8
---	---	---	---	---	---	---	---