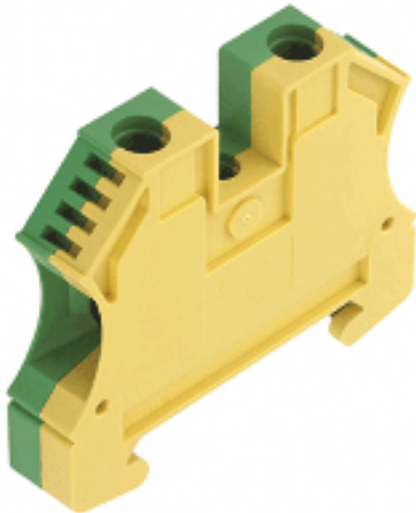


**W-Series
WPE 10**

Weidmüller Interface GmbH & Co. KG
Klingenbergstraße 16
D-32758 Detmold
Germany
Fon: +49 5231 14-0
Fax: +49 5231 14-292083
www.weidmueller.com



The PE terminals are available in two designs: standard and compact (N), with rated cross-section from 1.5 mm² to 150 mm² (e.g. 2.5 mm² – WPE 2.5 or 4 mm² – WPE 4N).

General ordering data

| | |
|------------|----------------------------------------------------------------------------------------------------|
| Type | WPE 10 |
| Order No. | 1010300000 |
| Version | W-Series, PE terminal, Rated cross-section: 10 mm ² , Screw connection, Direct mounting |
| GTIN (EAN) | 4008190031251 |
| Qty. | 50 pc(s). |

W-Series WPE 10

Weidmüller Interface GmbH & Co. KG
 Klingenbergstraße 16
 D-32758 Detmold
 Germany
 Fon: +49 5231 14-0
 Fax: +49 5231 14-292083
 www.weidmueller.com

Technische Daten

Dimensions and weights

| | | | |
|------------|---------|--------------------------|--------|
| Length | 56 mm | Width | 9.9 mm |
| Height | 46.5 mm | Height of lowest version | 47 mm |
| Net weight | 30.78 g | | |

Temperatures

| | | | |
|----------------------------------|--------|----------------------------------|--------|
| Operating temperature | | Storage temperature | |
| Continuous operating temp., min. | -50 °C | Continuous operating temp., max. | 120 °C |

Rated data IECEx/ATEX

| | | | |
|--------------------------------|---------------------------------------------------------------------------------------------------|---------------------------|--------------------------|
| Certificate No. (ATEX) | KEMA98ATEX1683U | ATEX certificate | KEMA98ATEX1683U_d.pdf |
| ATEX certificate | KEMA98ATEX1683U_e.pdf | IEC Ex certificate | IECEXULDO5.0008U_e.pdf |
| Wire cross section max. (ATEX) | 10 mm ² | Voltage, cross-connection | CrossConnectionGuide.pdf |
| Operating temperature range | For operating temperature range see EC Design Test Certificate / IEC Ex-Certificate of Conformity | Marking EN 60079-7 | |
| Marking ATEX Directive 94/9/EC | II 2 G D | | Ex e II |

Additional technical data

| | | | |
|-----------------------------|---------|---------------------|----------------------------------------------|
| Explosion-tested version | Yes | Installation advice | Direct mounting |
| Number of similar terminals | 1 | Open sides | closed |
| Type of mounting | Screwed | Version | Screw connection, With PE connection, closed |

CSA ratings data

| | | | |
|-------------------------------|----------------|-------------------------------|-------|
| Certificate No. (CSA) | 200039-1888378 | Wire cross section max. (CSA) | 6 AWG |
| Wire cross section min. (CSA) | 16 AWG | | |

Clampable wires (rated connection)

| | | | |
|-------------------------------------------------------------------------------------------------------------------------------|---------------------|---------------------------------------------------------------------------------------------------------------------------------------|----------------------|
| Type of connection | Screw connection | Stripping length | 12 mm |
| Blade size | 1.0 x 5.5 mm | Connection direction | on side |
| Number of connections | 2 | Clamping range, rated connection, min. | 1.31 mm ² |
| Clamping range, rated connection, max. | 16 mm ² | Clamping screw | M 4 |
| Tightening torque, min. | 1.2 Nm | Tightening torque, max. | 1.8 Nm |
| Gauge to IEC 60947-1 | B6 | Wire connection cross section, solid core, max. rated connection | 1.5 mm ² |
| Wire connection cross section, solid core max. rated connection | 16 mm ² | Wire connection cross section, stranded, rated connection, min. | 1.5 mm ² |
| Wire connection cross section, stranded, rated connection, max. | 16 mm ² | Wire connection cross section, finely stranded, max. | 16 mm ² |
| Wire connection cross-section, finely stranded, min. | 1.5 mm ² | Wire connection cross section, finely stranded with wire-end ferrules DIN 46228/1, rated connection, min. | 1.5 mm ² |
| Wire connection cross section, finely stranded with wire-end ferrules DIN 46228/1, rated connection, max. | 16 mm ² | Cross-section for connected conductor, finely stranded with wire-end ferrules and plastic collars DIN 46228/4, rated connection, min. | 1.5 mm ² |
| Wire connection cross-section, finely stranded with wire-end ferrules and plastic collars DIN 46228/4, rated connection, max. | 16 mm ² | | |

W-Series WPE 10

Weidmüller Interface GmbH & Co. KG
 Klingenbergstraße 16
 D-32758 Detmold
 Germany
 Fon: +49 5231 14-0
 Fax: +49 5231 14-292083
 www.weidmueller.com

Technische Daten

Dimensions

TS 35 offset 32 mm

Rated data

| | | | |
|------------------------------------------------------|--------------------|-------------------------------------|---------------|
| Rated cross-section | 10 mm ² | Rated voltage to adjoining terminal | 1,000 V |
| Rated impulse withstand voltage to adjacent terminal | 8 kV | Standards | IEC 60947-7-2 |
| Pollution severity | 3 | | |

UL ratings data

| | | | |
|-----------------------------------------|--------|-----------------------------------------|-------|
| Certificate No. (UR) | E60693 | Conductor size Factory wiring max. (UR) | 6 AWG |
| Conductor size Factory wiring min. (UR) | 16 AWG | Conductor size Field wiring max. (UR) | 6 AWG |

Material data

| | | | |
|---------------------------|-------|--------|---------------|
| Material | Wemid | Colour | Yellow, Green |
| UL 94 flammability rating | V-0 | | |

System specifications

| | | | |
|-----------------------------------|----------|----------------------------------|------------------|
| Product family | W-Series | Type of connection | Screw connection |
| Connection direction | on side | Number of levels | 1 |
| Number of connections | 2 | No. of clamping points per level | 2 |
| Levels cross-connected internally | No | Mounting rail | TS 35 |
| End cover plate required | No | | |

PE rating data

| | | | |
|------------------------------------------|------------------------------|---------------------|--------------------|
| Centre screw on PE terminals | M 3 | PEN function | No |
| Pollution severity | 3 | Rated cross-section | 10 mm ² |
| Rated short-time current | 1200 A (10 mm ²) | Standards | IEC 60947-7-2 |
| Tightening torque range for fixing screw | 0.5... 1.0 Nm | | |

Classifications

| | | | |
|------------|-------------|------------|-------------|
| ETIM 3.0 | EC000901 | UNSPSC | 30-21-18-11 |
| eClass 5.1 | 27-14-03-05 | eClass 6.2 | 27-14-03-05 |
| eClass 7.1 | 27-14-03-05 | | |

Product information

| | |
|---------------------------------|------------------------------------------------------------------------------------------------------------|
| Descriptive text technical data | AWG 6/7 and H07V-R16 tighten with 2.4 Nm. |
| Descriptive text accessories | Rail support protective insulation for installation of mounting rail "SH 2" order No. 0494920000 (QTY 10). |

Datenblatt

**W-Series
WPE 10**

Weidmüller Interface GmbH & Co. KG
Klingenbergstraße 16
D-32758 Detmold
Germany
Fon: +49 5231 14-0
Fax: +49 5231 14-292083
www.weidmueller.com

Technische Daten

Approvals

Approvals



ROHS

Conform

Datenblatt

W-Series
WPE 10

Weidmüller Interface GmbH & Co. KG
Klingenbergstraße 16
D-32758 Detmold
Germany
Fon: +49 5231 14-0
Fax: +49 5231 14-292083
www.weidmueller.com

Zeichnungen

