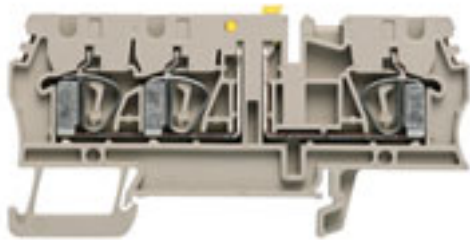


**Z terminal test-disconnect terminal  
ZTR 2.5/3AN**

**Weidmüller Interface GmbH & Co. KG**  
Klingenbergstraße 16  
D-32758 Detmold  
Germany  
Fon: +49 5231 14-0  
Fax: +49 5231 14-292083  
www.weidmueller.com



In standard and Roof Style forms

**General ordering data**

Order No.	<a href="#">8731720000</a>
Type	ZTR 2.5/3AN
Version	Z terminal test-disconnect terminal, Test-disconnect terminal, Rated cross-section: 2.5 mm <sup>2</sup> , Tension clamp connection, Wemid, Beige, Direct mounting
GTIN (EAN)	4032248404902
Qty.	100 pc(s).

**Z terminal test-disconnect terminal  
ZTR 2.5/3AN**

**Weidmüller Interface GmbH & Co. KG**  
 Klingenbergstraße 16  
 D-32758 Detmold  
 Germany  
 Fon: +49 5231 14-0  
 Fax: +49 5231 14-292083  
 www.weidmueller.com

**Technical data****Dimensions and weights**

Length	79.5 mm	Width	5.1 mm
Height	38.5 mm	Height of lowest version	41 mm
Net weight	11.29 g		

**Temperatures**

Operating temperature		Storage temperature	
Continuous operating temp., min.	-50 °C	Continuous operating temp., max.	120 °C

**Additional technical data**

Explosion-tested version	No	Installation advice	Direct mounting
Number of similar terminals	3	Open sides	right
Type of mounting	Snap-on		

**CSA ratings data**

Certificate No. (CSA)	200039-1152892	Voltage size B (CSA)	300 V
Voltage size C (CSA)	300 V	Current size B (CSA)	10 A
Current size C (CSA)	10 A	Wire cross section max. (CSA)	12 AWG
Wire cross section min. (CSA)	26 AWG		

**Clampable wires (additional connection)**

Conductor cross-section, flexible plus plastic collar DIN 46228/1, further connection, min.	0.5 mm <sup>2</sup>	Conductor cross-section, flexible plus plastic collar DIN 46228/1, further connection, max.	1.5 mm <sup>2</sup>
---	---------------------	---	---------------------

**Clampable wires (rated connection)**

Type of connection	Tension clamp connection	Stripping length	10 mm
Blade size	0.6 x 3.5 mm	Connection direction	top
Number of connections	3	Clamping range, rated connection, min.	0.05 mm <sup>2</sup>
Clamping range, rated connection, max.	4 mm <sup>2</sup>	Gauge to IEC 60947-1	A3
Wire connection cross section, solid core, max. rated connection	0.5 mm <sup>2</sup>	Wire connection cross section, solid core max. rated connection	4 mm <sup>2</sup>
Wire connection cross section, finely stranded, max.	4 mm <sup>2</sup>	Wire connection cross-section, finely stranded, min.	0.5 mm <sup>2</sup>
Wire connection cross section, finely stranded with wire-end ferrules DIN 46228/1, rated connection, min.	0.5 mm <sup>2</sup>	Wire connection cross section, finely stranded with wire-end ferrules DIN 46228/1, rated connection, max.	2.5 mm <sup>2</sup>
Cross-section for connected conductor, finely stranded with wire-end ferrules and plastic collars DIN 46228/4, rated connection, min.	2.5 mm <sup>2</sup>	Wire connection cross-section, finely stranded with wire-end ferrules and plastic collars DIN 46228/4, rated connection, max.	2.5 mm <sup>2</sup>
Wire connection cross section AWG, min.	AWG 30	Wire connection cross section AWG, max.	AWG 12

**Disconnect terminals**

Cross-disconnect	without	Integral test socket	Yes
Slitting	Pivoting		

**Z terminal test-disconnect terminal  
ZTR 2.5/3AN**

**Weidmüller Interface GmbH & Co. KG**  
Klingenbergstraße 16  
D-32758 Detmold  
Germany  
Fon: +49 5231 14-0  
Fax: +49 5231 14-292083  
www.weidmueller.com

**Technical data**
**Rated data**

Rated cross-section	2.5 mm <sup>2</sup>	Rated voltage	500 V
Rated impulse withstand voltage	6 kV	Rated current	20 A
Current at maximum wires	20 A	Standards	IEC 60947-7-1
Pollution severity	3		

**UL ratings data**

Certificate No. (UR)	E60693VOL1SEC52	Voltage size C (UR)	600 V
Current size C (UR)	20 A	Conductor size Factory wiring max. (UR)	12 AWG
Conductor size Factory wiring min. (UR)	30 AWG	Conductor size Field wiring max. (UR)	12 AWG

**Material data**

Insulating material	Wemid	Material	Wemid
Colour	Dark Beige	UL 94 flammability rating	V-0

**System specifications**

Product family	Z terminal test-disconnect terminal	Type of connection	Tension clamp connection
Connection direction	top	Number of levels	1
Number of connections	3	No. of clamping points per level	3
Levels cross-connected internally	No	End cover plate required	Yes

**Classifications**

ETIM 2.0	EC000902	ETIM 3.0	EC000902
UNSPSC	30-21-18-11	eClass 4.1	27-14-11-17
eClass 5.1	27-14-11-26	eClass 6.0	27-14-11-26
eClass 7.0	27-14-11-26		

**Product information**

Descriptive text technical data	2.5 mm <sup>2</sup> flexible wires with wire-end ferrules are crimped with the Weidmüller PZ 6/5 crimping tool.
Descriptive text accessories	If the disconnect lever is replaced by the SIHA 3, a fused terminal is created.

**Approvals**

Approvals



## Z terminal test-disconnect terminal ZTR 2.5/3AN

**Weidmüller Interface GmbH & Co. KG**  
Klingenbergstraße 16  
D-32758 Detmold  
Germany  
Fon: +49 5231 14-0  
Fax: +49 5231 14-292083  
www.weidmueller.com

## Accessories

### ZQV 2.5



Weidmüller offers users of modular terminals of the Z-Series a comprehensive range of accessories that render possible appropriate solutions for all - even non-standard - tasks.

The accessories must comply with the same quality standards as the modular terminals themselves.

### General ordering data

Order No.	Type	Version	GTIN (EAN)	Qty.
<a href="#">1697540000</a>	ZQV 2.5/50	Z-series, Accessories, Cross-connector, For the terminals, No. of poles: 50	4008190883256	10 pc(s).
<a href="#">1608890000</a>	ZQV 2.5/5	Z-series, Accessories, Cross-connector, For the terminals, No. of poles: 5	4008190065713	20 pc(s).
<a href="#">1608880000</a>	ZQV 2.5/4	Z-series, Accessories, Cross-connector, For the terminals, No. of poles: 4	4008190082208	60 pc(s).
<a href="#">1608920000</a>	ZQV 2.5/8	Z-series, Accessories, Cross-connector, For the terminals, No. of poles: 8	4008190061531	20 pc(s).
<a href="#">1608860000</a>	ZQV 2.5/2	Z-series, Accessories, Cross-connector, For the terminals, No. of poles: 2	4008190123680	60 pc(s).
<a href="#">1608900000</a>	ZQV 2.5/6	Z-series, Accessories, Cross-connector, For the terminals, No. of poles: 6	4008190149840	20 pc(s).
<a href="#">1608930000</a>	ZQV 2.5/9	Z-series, Accessories, Cross-connector, For the terminals, No. of poles: 9	4008190117009	20 pc(s).
<a href="#">1608940000</a>	ZQV 2.5/10	Z-series, Accessories, Cross-connector, For the terminals, No. of poles: 10	4008190099060	20 pc(s).
<a href="#">1608910000</a>	ZQV 2.5/7	Z-series, Accessories, Cross-connector, For the terminals, No. of poles: 7	4008190159665	20 pc(s).
<a href="#">1608870000</a>	ZQV 2.5/3	Z-series, Accessories, Cross-connector, For the terminals, No. of poles: 3	4008190061630	60 pc(s).

**Z terminal test-disconnect terminal  
ZTR 2.5/3AN**

**Weidmüller Interface GmbH & Co. KG**  
Klingenbergstraße 16  
D-32758 Detmold  
Germany  
Fon: +49 5231 14-0  
Fax: +49 5231 14-292083  
www.weidmueller.com

**Accessories**

**Component Plug BEST**



Weidmüller offers users of modular terminals a comprehensive range of accessories that render possible appropriate solutions for all - even non-standard - tasks.

**General ordering data**

Order No.	Type	Version	GTIN (EAN)	Qty.
<a href="#">1878560000</a>	BEST/D	Accessories, Component plug	4032248471492	50 pc(s).
<a href="#">1878570000</a>	BEST/DRBR	Accessories, Component plug	4032248471508	50 pc(s).

**Test plugs**



The solution with Weidmüller test plugs and sockets guarantees a proper test of the installation.

**General ordering data**

Order No.	Type	Version	GTIN (EAN)	Qty.
<a href="#">0180400000</a>	PS 2.3 RT	Accessories, Test plug	4008190060121	20 pc(s).

**Fuse Holder SIHA 3**



Weidmüller offers users of modular terminals a comprehensive range of accessories that render possible appropriate solutions for all - even non-standard - tasks.

**General ordering data**

Order No.	Type	Version	GTIN (EAN)	Qty.
<a href="#">7921570000</a>	SIHA 3/G20/LD 10-36V	Accessories, Fuse holder, Rated cross-section: Plug-in connection, Wemid,	4032248322503	25 pc(s).

**Z terminal test-disconnect terminal  
ZTR 2.5/3AN**

**Weidmüller Interface GmbH & Co. KG**  
Klingenbergstraße 16  
D-32758 Detmold  
Germany  
Fon: +49 5231 14-0  
Fax: +49 5231 14-292083  
www.weidmueller.com

**Accessories**

	Dark Beige, Operating instructions/catalogue	
<a href="#">792160000</a> SIHA 3/G20/LD 140-250V	Accessories, Fuse holder, Rated cross-section: Plug-in connection, Wemid, Dark Beige, Operating instructions/catalogue	4032248322633 25 pc(s).
<a href="#">792158000</a> SIHA 3/G20/LD 35-70V	Accessories, Fuse holder, Rated cross-section: Plug-in connection, Wemid, Dark Beige, Operating instructions/catalogue	4032248322619 25 pc(s).
<a href="#">792159000</a> SIHA 3/G20/LD 60-150V	Accessories, Fuse holder, Rated cross-section: Plug-in connection, Wemid, Dark Beige, Operating instructions/catalogue	4032248322626 25 pc(s).

**Blank**



**WS markers** are the perfect match for the connectors of the W series. But thanks to their system compatibility the WS tags can also be used with the I series and the Z series. The large areas for printing permit not only long character strings but also multiple lines.

**WS markers** are ideal for labels with long, bespoke character strings. The tried-and-tested MultiCard format means that printing can be carried out with **laser printers, PrintJet, plotters** or the **MC-Mobilo**.

- Can be fitted in strips or singly
- Markers in proven multicard format

**General ordering data**

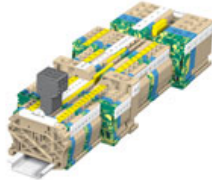
Order No.	Type	Version	GTIN (EAN)	Qty.
<a href="#">163500000</a>	WS 10/5 MC NE WS	Terminal markers, MultiCard, 10 x 5 mm, Polyamide, Colour: White	4008190261948	720 pc(s).
<a href="#">179200000</a>	WS 10/5 MC M NE WS	Terminal markers, MultiCard, 10 x 5 mm, Polyamide, Colour: White	4032248223862	720 pc(s).

**Z terminal test-disconnect terminal  
ZTR 2.5/3AN**

**Weidmüller Interface GmbH & Co. KG**  
 Klingenbergstraße 16  
 D-32758 Detmold  
 Germany  
 Fon: +49 5231 14-0  
 Fax: +49 5231 14-292083  
 www.weidmueller.com

**Accessories**
**Cross-connection**

A plug-in cross-connection system (ZQV) is available for all modular terminals of the P-series.


**General ordering data**

Order No.	Type	Version	GTIN (EAN)	Qty.
<a href="#">1908960000</a>	ZQV 2.5/20	Z-series, Accessories, Cross-connector, For the terminals, No. of poles: 20	4032248535293	20 pc(s).

**Disconnect Plug**


Weidmüller offers users of modular terminals of the Z-Series a comprehensive range of accessories that render possible appropriate solutions for all - even non-standard - tasks.  
 The accessories must comply with the same quality standards as the modular terminals themselves.

**General ordering data**

Order No.	Type	Version	GTIN (EAN)	Qty.
<a href="#">1833090000</a>	TNST	Accessories, Disconnect plug	4032248471485	50 pc(s).

**Component Plug**


Weidmüller offers users of modular terminals of the Z-Series a comprehensive range of accessories that render possible appropriate solutions for all - even non-standard - tasks.  
 The accessories must comply with the same quality standards as the modular terminals themselves.

**General ordering data**

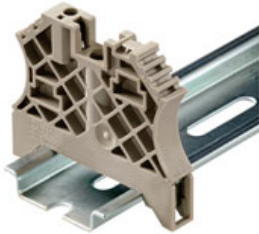
Order No.	Type	Version	GTIN (EAN)	Qty.
<a href="#">1833100000</a>	BEST	Accessories, Component plug	4032248501014	50 pc(s).

**Z terminal test-disconnect terminal  
ZTR 2.5/3AN**

**Weidmüller Interface GmbH & Co. KG**  
 Klingenbergstraße 16  
 D-32758 Detmold  
 Germany  
 Fon: +49 5231 14-0  
 Fax: +49 5231 14-292083  
 www.weidmueller.com

**Accessories**

**for TS 35 terminal rail**



Weidmüller's range of products includes end brackets that guarantee a permanent, reliable mounting on the terminal rail and prevent sliding. Versions with and without screws are available. The end brackets include marking options, also for group markers, and also a test plug holder.

**General ordering data**

Order No.	Type	Version	GTIN (EAN)	Qty.
<a href="#">0383530000</a>	EW 35 GR 7032	Accessories, End bracket	4008190027322	50 pc(s).
<a href="#">1059000000</a>	WEW 35/1	Accessories, End bracket	4008190172282	50 pc(s).
<a href="#">0383560000</a>	EW 35	Accessories, End bracket	4008190181314	50 pc(s).
<a href="#">8630740000</a>	ZEW 35/2	Accessories, End bracket	4032248348916	20 pc(s).
<a href="#">1061200000</a>	WEW 35/2	Accessories, End bracket	4008190030230	100 pc(s).
<a href="#">9540000000</a>	ZEW 35	Accessories, End bracket	4008190956264	20 pc(s).
<a href="#">0258660000</a>	EW 35/SCHA/M3	Accessories, End bracket	4008190033477	20 pc(s).

**Blank**



The **dekafix (DEK)** marker is the universal marker for all conductor and plug-in connectors as well as for electronics modules. The system is ideal for small groups of consecutive numbers and covers a large range of ready-printed markers. Being mounted as strips means that they are quickly clipped on in one operation. The printing is legible with good contrast, and is available in five widths.

- Large selection of ready-to-use markers
- In strips for fast installation
- Connector markers are suitable for all Weidmüller conductor connectors
- Available as blank cards, MultiCard or as cards with standard printing

**General ordering data**

Order No.	Type	Version	GTIN (EAN)	Qty.
<a href="#">1609801044</a>	DEK 5/5 MC-10 NE WS	Terminal markers, MultiCard, 5 x 5 mm, Polyamide, Colour: White	4008190397111	1,000 pc(s).



**Z terminal test-disconnect terminal  
ZTR 2.5/3AN**

**Weidmüller Interface GmbH & Co. KG**  
Klingenbergstraße 16  
D-32758 Detmold  
Germany  
Fon: +49 5231 14-0  
Fax: +49 5231 14-292083  
www.weidmueller.com

**Accessories**

**ZTA 1**



Weidmüller offers users of modular terminals of the Z-Series a comprehensive range of accessories that render possible appropriate solutions for all - even non-standard - tasks.  
The accessories must comply with the same quality standards as the modular terminals themselves.

**General ordering data**

Order No.	Type	Version	GTIN (EAN)	Qty.
<a href="#">1609050000</a>	ZTA 1/ZA	Test adapter, Rated control voltage:	4008190206543	25 pc(s).
<a href="#">1609040000</a>	ZTA 1	Test adapter, Rated control voltage:	4008190196851	25 pc(s).

**Screwdrivers**



**Always the right tools:**

Weidmüller screwdrivers are the result of a consistent grip concept which takes into account both the human hand and the different requirements when working. The right blade for every screw - with four different handle sizes

The advantages are obvious:

- User-friendly: ergonomic handle arrangement for effortless working progress
- Optimised connections: compatible blade and perfect handle size for maximum torque
- Reliable: even easier operation for even quicker wiring

The result: efficient, professional working progress.

**General ordering data**

Order No.	Type	Version	GTIN (EAN)	Qty.
<a href="#">9008330000</a>	SDS 0.6X3.5X100	Screwdriver, Blade width (B): 3.5 mm, Blade length: 100 mm, Blade thickness (A): 0.6 mm	4032248056286	1 pc(s).

**Z terminal test-disconnect terminal  
ZTR 2.5/3AN**

**Weidmüller Interface GmbH & Co. KG**  
 Klingenbergstraße 16  
 D-32758 Detmold  
 Germany  
 Fon: +49 5231 14-0  
 Fax: +49 5231 14-292083  
 www.weidmueller.com

**Accessories**

**ZAP/TW 3**



Weidmüller offers users of modular terminals of the Z-Series a comprehensive range of accessories that render possible appropriate solutions for all - even non-standard - tasks.

The accessories must comply with the same quality standards as the modular terminals themselves.

**General ordering data**

Order No.	Type	Version	GTIN (EAN)	Qty.
<a href="#">1683880000</a>	ZAP/TW 3 WS	Z-series, End plate, Partition	4008190477608	50 pc(s).
		plate, White, 2 mm		
<a href="#">1683890000</a>	ZAP/TW 3 SW	Z-series, End plate, Partition	4008190477615	50 pc(s).
		plate, Black, 2 mm		
<a href="#">1608810000</a>	ZAP/TW 3 BL	Z-series, End plate, Partition	4008190190934	50 pc(s).
		plate, Blue, Light Blue, 2 mm		
<a href="#">1683840000</a>	ZAP/TW 3 GN	Z-series, End plate, Partition	4008190477561	50 pc(s).
		plate, Green, 2 mm		
<a href="#">1608800000</a>	ZAP/TW 3	Z-series, End plate, Partition	4008190190927	50 pc(s).
		plate, Dark Beige, 2 mm		
<a href="#">1683870000</a>	ZAP/TW 3 GR	Z-series, End plate, Partition	4008190477592	50 pc(s).
		plate, Grey, 2 mm		
<a href="#">1608820000</a>	ZAP/TW 3 OR	Z-series, End plate, Partition	4008190190941	50 pc(s).
		plate, Orange, 2 mm		
<a href="#">1683820000</a>	ZAP/TW 3 RT	Z-series, End plate, Partition	4008190477547	50 pc(s).
		plate, Red, 2 mm		