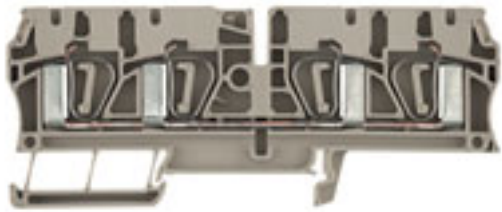


## Z terminal with tension spring connection ZDU 4/4AN

**Weidmüller Interface GmbH & Co. KG**  
 Klingenbergstraße 16  
 D-32758 Detmold  
 Germany  
 Fon: +49 5231 14-0  
 Fax: +49 5231 14-292083  
 www.weidmueller.com



Terminal blocks in tension clamp system and the Z Series are specially customised to the customers' requirements. Less space, spacious labelling area, integrated test point, cross-connection functionality within the Z Series and another family of terminals by Weidmüller. Z-Series terminals have a large clamping range and one or two cross-connection slots. Plug-in standard cross-connections enable potentials to be distributed over any number of terminals.

### General ordering data

Order No.	<a href="#">7904290000</a>
Type	ZDU 4/4AN
Version	Z terminal with tension spring connection, Feed-through terminal, Rated cross-section: 4 mm <sup>2</sup> , Tension clamp connection, Wemid, Dark Beige, Direct mounting
GTIN (EAN)	4032248422197
Qty.	50 pc(s).

## Z terminal with tension spring connection ZDU 4/4AN

**Weidmüller Interface GmbH & Co. KG**  
Klingenbergstraße 16  
D-32758 Detmold  
Germany  
Fon: +49 5231 14-0  
Fax: +49 5231 14-292083  
www.weidmueller.com

### Technical data

#### Dimensions and weights

Length	104.5 mm	Width	6.1 mm
Height	43 mm	Height of lowest version	43.5 mm
Net weight	21.32 g		

#### Temperatures

Operating temperature		Storage temperature	
Continuous operating temp., min.	-50 °C	Continuous operating temp., max.	120 °C

#### Rated data IECEx/ATEX

Certificate No. (ATEX)	KEMA00ATEX2 107U	ATEX certificate	KEMA00ATEX2 107U_d.pdf
ATEX certificate	KEMA00ATEX2 107U_e.pdf	IEC Ex certificate	IECExULD05.0009U_e.pdf
Max. voltage (ATEX)	550 V	Current (ATEX)	28 A
Wire cross section max. (ATEX)	4 mm <sup>2</sup>	Voltage, cross-connection	CrossConnectionGuide.pdf
Operating temperature range	For operating temperature range see EC Design Test Certificate / IEC Ex-Certificate of Conformity	Marking EN 60079-7	
Marking ATEX Directive 94/9/EC	II 2 G D		Ex e II

#### Additional technical data

Explosion-tested version	Yes	Installation advice	Direct mounting
Number of similar terminals	1	Open sides	right
Type of mounting	Snap-on		

#### CSA ratings data

Certificate No. (CSA)	200039-1 152892	Voltage size B (CSA)	600 V
Voltage size C (CSA)	600 V	Voltage size D (CSA)	600 V
Current size B (CSA)	35 A	Current size C (CSA)	35 A
Current size D (CSA)	5 A	Wire cross section max. (CSA)	10 AWG
Wire cross section min. (CSA)	26 AWG		

#### Clampable wires (additional connection)

Conductor cross-section, flexible plus plastic collar DIN 46228/1, further connection, min.	0.5 mm <sup>2</sup>	Conductor cross-section, flexible plus plastic collar DIN 46228/1, further connection, max.	4 mm <sup>2</sup>
---	---------------------	---	-------------------

**Z terminal with tension spring connection  
ZDU 4/4AN**

**Weidmüller Interface GmbH & Co. KG**  
 Klingenbergstraße 16  
 D-32758 Detmold  
 Germany  
 Fon: +49 5231 14-0  
 Fax: +49 5231 14-292083  
 www.weidmueller.com

**Technical data****Clampable wires (rated connection)**

Type of connection	Tension clamp connection	Stripping length	12 mm
Blade size	0.6 x 3.5 mm	Connection direction	top
Number of connections	4	Clamping range, rated connection, min.	0.13 mm <sup>2</sup>
Clamping range, rated connection, max.	6 mm <sup>2</sup>	Gauge to IEC 60947-1	A4
Wire connection cross section, solid core, max. rated connection	0.5 mm <sup>2</sup>	Wire connection cross section, solid core max. rated connection	6 mm <sup>2</sup>
Wire connection cross section, stranded, rated connection, min.	0.5 mm <sup>2</sup>	Wire connection cross section, stranded, rated connection, max.	6 mm <sup>2</sup>
Wire connection cross section, finely stranded, max.	6 mm <sup>2</sup>	Wire connection cross-section, finely stranded, min.	0.5 mm <sup>2</sup>
Wire connection cross section, finely stranded with wire-end ferrules DIN 46228/1, rated connection, min.	0.5 mm <sup>2</sup>	Wire connection cross section, finely stranded with wire-end ferrules DIN 46228/1, rated connection, max.	4 mm <sup>2</sup>
Cross-section for connected conductor, finely stranded with wire-end ferrules and plastic collars DIN 46228/4, rated connection, min.	0.5 mm <sup>2</sup>	Wire connection cross-section, finely stranded with wire-end ferrules and plastic collars DIN 46228/4, rated connection, max.	4 mm <sup>2</sup>
Twin wire-end ferrules, min.	0.5 mm <sup>2</sup>	Twin wire-end ferrules, max.	1.5 mm <sup>2</sup>
Wire connection cross section AWG, min.	AWG 26	Wire connection cross section AWG, max.	AWG 10

**Rated data**

Rated cross-section	4 mm <sup>2</sup>	Rated voltage	800 V
Rated impulse withstand voltage	8 kV	Rated current	32 A
Current at maximum wires	41 A	Standards	IEC 60947-7-1
Pollution severity	3		

**UL ratings data**

Certificate No. (UR)	E60693VOL1SEC52	Voltage size C (UR)	600 V
Current size C (UR)	33 A	Conductor size Factory wiring max. (UR)	10 AWG
Conductor size Factory wiring min. (UR)	26 AWG	Conductor size Field wiring max. (UR)	10 AWG

**Material data**

Insulating material	Wemid	Material	Wemid
Colour	Dark Beige	UL 94 flammability rating	V-0

**System specifications**

Product family	Z terminal with tension spring connection	Type of connection	Tension clamp connection
Connection direction	top	Number of levels	1
Number of connections	4	No. of clamping points per level	4
Levels cross-connected internally	No	Mounting rail	TS 35
End cover plate required	Yes		

**Classifications**

ETIM 2.0	EC000897	ETIM 3.0	EC000897
UNSPSC	30-21-18-11	eClass 4.1	27-14-11-20
eClass 5.1	27-14-11-20	eClass 6.0	27-14-11-20
eClass 7.0	27-14-11-20		

**Z terminal with tension spring connection  
ZDU 4/4AN**

**Weidmüller Interface GmbH & Co. KG**  
Klingenbergstraße 16  
D-32758 Detmold  
Germany  
Fon: +49 5231 14-0  
Fax: +49 5231 14-292083  
www.weidmueller.com

**Technical data****Product information**

Descriptive text technical data      When using twin ferrules, the rated voltage is 690 V.

**Approvals**

Approvals



**Z terminal with tension spring connection  
ZDU 4/4AN**

**Weidmüller Interface GmbH & Co. KG**  
Klingenbergstraße 16  
D-32758 Detmold  
Germany  
Fon: +49 5231 14-0  
Fax: +49 5231 14-292083  
www.weidmueller.com

**Accessories**

**ZTA 2**



Weidmüller offers users of modular terminals of the Z-Series a comprehensive range of accessories that render possible appropriate solutions for all - even non-standard - tasks.

The accessories must comply with the same quality standards as the modular terminals themselves.

**General ordering data**

Order No.	Type	Version	GTIN (EAN)	Qty.
<a href="#">1609060000</a>	ZTA 2 ZDU4	Test adapter, Rated control voltage:	4008190466220	25 pc(s).
<a href="#">1609070000</a>	ZTA 2/ZA ZDU4	Test adapter, Rated control voltage:	4008190466237	25 pc(s).

**Custom printing**



The **dekafix (DEK)** marker is the universal marker for all conductor and plug-in connectors as well as for electronics modules. The system is ideal for small groups of consecutive numbers and covers a large range of ready-printed markers.

Being mounted as strips means that they are quickly clipped on in one operation. The printing is legible with good contrast, and is available in five widths.

- Large selection of ready-to-use markers
- In strips for fast installation
- Connector markers are suitable for all Weidmüller conductor connectors
- Available as blank cards, MultiCard or as cards with standard printing

**General ordering data**

Order No.	Type	Version	GTIN (EAN)	Qty.
<a href="#">1609830000</a>	DEK 5/6 MC SDR	Terminal markers, MultiCard, 5 x 6 mm, Polyamide 66, Colour: To customer specification	4008190456603	200 pc(s).

**Z terminal with tension spring connection  
ZDU 4/4AN**

**Weidmüller Interface GmbH & Co. KG**  
 Klingenbergstraße 16  
 D-32758 Detmold  
 Germany  
 Fon: +49 5231 14-0  
 Fax: +49 5231 14-292083  
 www.weidmueller.com

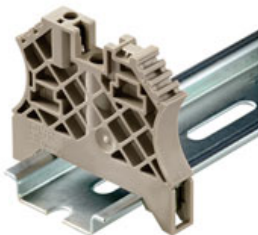
**Accessories**
**ZAD**


Weidmüller offers users of modular terminals of the Z-Series a comprehensive range of accessories that render possible appropriate solutions for all - even non-standard - tasks.

The accessories must comply with the same quality standards as the modular terminals themselves.

**General ordering data**

Order No.	Type	Version	GTIN (EAN)	Qty.
<a href="#">1609080000</a>	ZAD 2/4	Z-series, Cover, Yellow,	8.944008190263317 20	pc(s).
		mm		

**for TS 35 terminal rail**


Weidmüller's range of products includes end brackets that guarantee a permanent, reliable mounting on the terminal rail and prevent sliding. Versions with and without screws are available. The end brackets include marking options, also for group markers, and also a test plug holder.

**General ordering data**

Order No.	Type	Version	GTIN (EAN)	Qty.
<a href="#">0383530000</a>	EW 35 GR 7032	Accessories, End bracket	4008190027322 50	pc(s).
<a href="#">1059000000</a>	WEW 35/1	Accessories, End bracket	4008190172282 50	pc(s).
<a href="#">0383560000</a>	EW 35	Accessories, End bracket	4008190181314 50	pc(s).
<a href="#">8630740000</a>	ZEW 35/2	Accessories, End bracket	4032248348916 20	pc(s).
<a href="#">1061200000</a>	WEW 35/2	Accessories, End bracket	4008190030230 100	pc(s).
<a href="#">9540000000</a>	ZEW 35	Accessories, End bracket	4008190956264 20	pc(s).
<a href="#">0258660000</a>	EW 35/SCHA/M3	Accessories, End bracket	4008190033477 20	pc(s).

**Z terminal with tension spring connection  
ZDU 4/4AN**

**Weidmüller Interface GmbH & Co. KG**  
 Klingenbergstraße 16  
 D-32758 Detmold  
 Germany  
 Fon: +49 5231 14-0  
 Fax: +49 5231 14-292083  
 www.weidmueller.com

**Accessories**

**Test plugs**



The solution with Weidmüller test plugs and sockets guarantees a proper test of the installation.

**General ordering data**

Order No.	Type	Version	GTIN (EAN)	Qty.
<a href="#">0180400000</a>	PS 2.3 RT	Accessories, Test plug	4008190060121	20 pc(s).

**Blank**



**ZS markers** - in the established **MultiCard**-format - were specially developed for the Z series. They have a large printing area. The hinged mechanism even allows access to cross-connectors without having to dismount the markers. Fast fitting is guaranteed by the fact that the single tags are clipped on in strips. The single tags are also easy to separate.

- Hinged marker area
- Can be fitted in strips or singly
- Markers in proven multicard format

**General ordering data**

Order No.	Type	Version	GTIN (EAN)	Qty.
<a href="#">1610020000</a>	ZS 12/6 MC NE WS	Terminal markers, MultiCard, 12 x 6 mm, Polyamide + POM, Colour: White	4008190444600	400 pc(s).

**Z terminal with tension spring connection  
ZDU 4/4AN**

**Weidmüller Interface GmbH & Co. KG**  
 Klingenbergstraße 16  
 D-32758 Detmold  
 Germany  
 Fon: +49 5231 14-0  
 Fax: +49 5231 14-292083  
 www.weidmueller.com

**Accessories**
**Screwdrivers**

**Always the right tools:**

Weidmüller screwdrivers are the result of a consistent grip concept which takes into account both the human hand and the different requirements when working. The right blade for every screw - with four different handle sizes

The advantages are obvious:

- User-friendly: ergonomic handle arrangement for effortless working progress
- Optimised connections: compatible blade and perfect handle size for maximum torque
- Reliable: even easier operation for even quicker wiring

The result: efficient, professional working progress.

**General ordering data**

Order No.	Type	Version	GTIN (EAN)	Qty.
<a href="#">9008330000</a>	SDS 0.6X3.5X100	Screwdriver, Blade width (B): 3.5 mm, Blade length: 100 mm, Blade thickness (A): 0.6 mm	4032248056286	1 pc(s).

**ZQV 4**


Weidmüller offers users of modular terminals of the Z-Series a comprehensive range of accessories that render possible appropriate solutions for all - even non-standard - tasks.

The accessories must comply with the same quality standards as the modular terminals themselves.

**General ordering data**

Order No.	Type	Version	GTIN (EAN)	Qty.
<a href="#">1608960000</a>	ZQV 4/3 GE	Z-series, Accessories, Cross-connector, For the terminals, No. of poles: 3	4008190263232	60 pc(s).
<a href="#">1608980000</a>	ZQV 4/5 GE	Z-series, Accessories, Cross-connector, For the terminals, No. of poles: 5	4008190263256	20 pc(s).
<a href="#">1609000000</a>	ZQV 4/7 GE	Z-series, Accessories, Cross-connector, For the terminals, No. of poles: 7	4008190263270	20 pc(s).
<a href="#">1609010000</a>	ZQV 4/8 GE	Z-series, Accessories, Cross-connector, For the terminals, No. of poles: 8	4008190263287	20 pc(s).
<a href="#">1608950000</a>	ZQV 4/2 GE	Z-series, Accessories, Cross-connector, For the terminals, No. of poles: 2	4008190263225	60 pc(s).



## Z terminal with tension spring connection ZDU 4/4AN

**Weidmüller Interface GmbH & Co. KG**  
 Klängenbergstraße 16  
 D-32758 Detmold  
 Germany  
 Fon: +49 5231 14-0  
 Fax: +49 5231 14-292083  
 www.weidmueller.com

### Accessories

<a href="#">1609020000</a> ZQV 4/9 GE	Z-series, Accessories, Cross-connector, For the terminals, No. of poles: 9	4008190263294 20 pc(s).
<a href="#">1609030000</a> ZQV 4/10 GE	Z-series, Accessories, Cross-connector, For the terminals, No. of poles: 10	4008190263300 20 pc(s).
<a href="#">1608970000</a> ZQV 4/4 GE	Z-series, Accessories, Cross-connector, For the terminals, No. of poles: 4	4008190263249 60 pc(s).
<a href="#">1608990000</a> ZQV 4/6 GE	Z-series, Accessories, Cross-connector, For the terminals, No. of poles: 6	4008190263263 20 pc(s).

### ZAP/TW4/4AN



Weidmüller offers users of modular terminals of the Z-Series a comprehensive range of accessories that render possible appropriate solutions for all - even non-standard - tasks.  
 The accessories must comply with the same quality standards as the modular terminals themselves.

### General ordering data

Order No.	Type	Version	GTIN (EAN)	Qty.
<a href="#">7904220000</a>	ZAP/TW4/4AN BL	Z-series, End plate, Partition plate, Blue, 2 mm	4008190576028	20 pc(s).
<a href="#">7904210000</a>	ZAP/TW4/4AN	Z-series, End plate, Partition plate, Dark Beige, 2 mm	4008190576035	20 pc(s).

### Blank



**WS markers** are the perfect match for the connectors of the W series. But thanks to their system compatibility the WS tags can also be used with the I series and the Z series. The large areas for printing permit not only long character strings but also multiple lines.  
**WS markers** are ideal for labels with long, bespoke character strings. The tried-and-tested MultiCard format means that printing can be carried out with **laser** printers, **PrintJet**, **plotters** or the **MC-Mobilo**.

- Can be fitted in strips or singly
- Markers in proven multicard format

### General ordering data

Order No.	Type	Version	GTIN (EAN)	Qty.
<a href="#">1818400000</a>	WS 10/6 MC M NE WS	Terminal markers, MultiCard, 10 x 6 mm, Polyamide, Colour: White	4032248310876	600 pc(s).

**Data sheet...****Z terminal with tension spring connection  
ZDU 4/4AN**

**Weidmüller Interface GmbH & Co. KG**  
Klingenbergstraße 16  
D-32758 Detmold  
Germany  
Fon: +49 5231 14-0  
Fax: +49 5231 14-292083  
www.weidmueller.com

**Accessories**

[1828450000](#) WS 10/6 MC NE WS

Terminal markers,  
MultiCard, 10 x 6 mm,  
Polyamide, Colour: White

4032248350513 600 pc(s).