

## Brief Instruction

### USB Converter Installation – SAUTER AFH 12

#### Hardware Installation

- Deposit Driver-CD of the converter into PC  
The Driver-CD might be located in the back part of the sales packaging

- Activation and installation of the Driver-Software

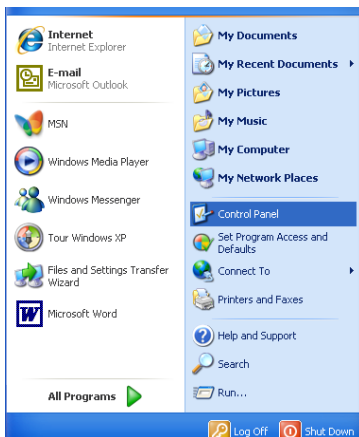
Then:

- Insert converter (RS 232 to USB) into USB-Port

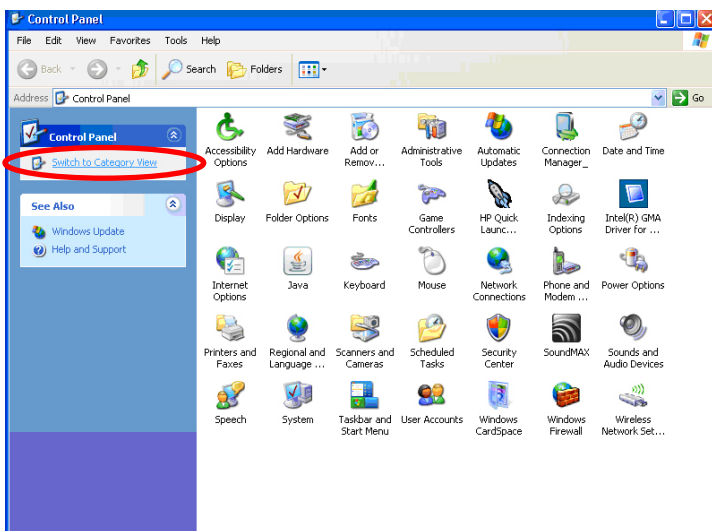
#### Software Installation

Allocation of the virtual COM Interface (= Port) to USB Converter.

- Access „Control Panel“



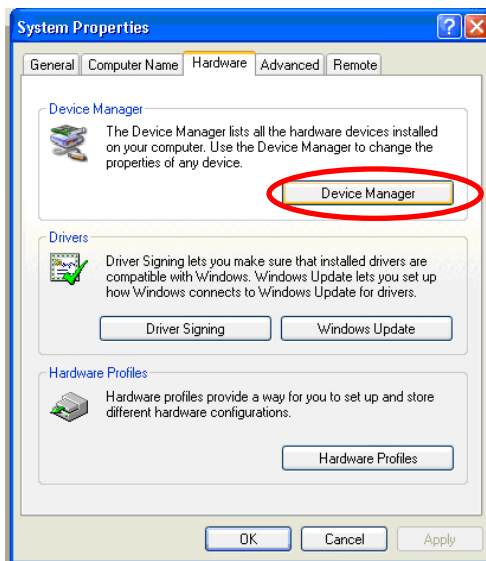
- Access „System“
- If necessary, change to „Category View“



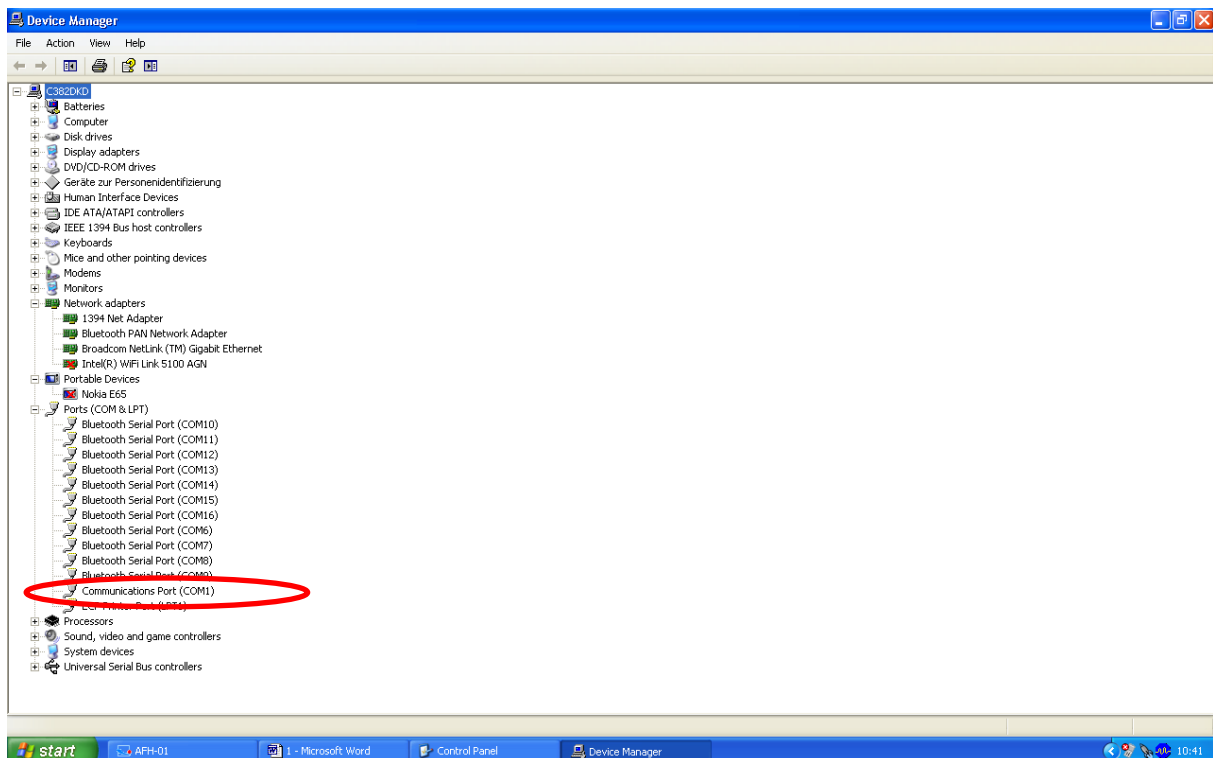
## Brief Instruction

### USB Converter Installation – SAUTER AFH 12

- Select file „Hardware“
- Access „Device-Manager“



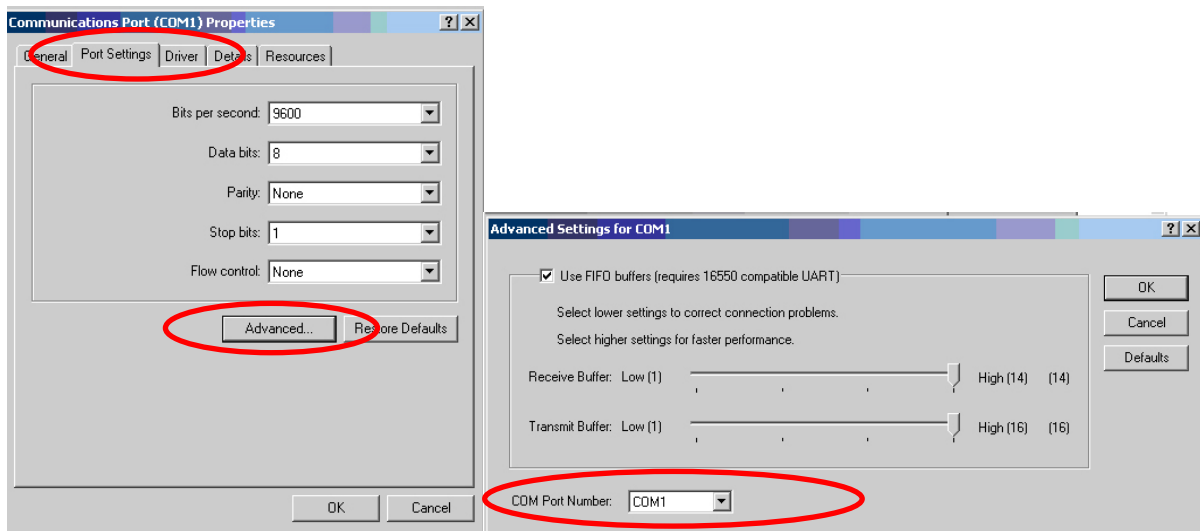
- Select „Data link (COM and LPT)“



## Brief Instruction

### USB Converter Installation – SAUTER AFH 12

- Select „Prolific USB..“ – At other products of this kind, denomination may vary in this place.
- Select file „Port Settings“
- Click to „Advanced“



- Selection of the adequate COM Port
- Thereafter: Adequate selection of the same COM Port in the Application software (e.g.)
  - o KERN Balance Connection SCD-4.0
  - o SAUTER AFH-01
  - o SAUTER ATC-01 / ATD-01

## Brief Instruction

### USB Converter Installation – SAUTER AFH 12

For example:



#### Troubleshooting

1. > For program KERN „Bottle.exe“ of the Stockmaster Bottleweighing Balance it definitely has to be selected „COM 1“
2. > In case if „COM 1“ is occupied and not selectable, the reason of this is generally, that already another peripheral device has occupied this port (e.g. a mouse pointer, printer, mobile phone etc.).

Starting from here, these are all sub-items to “COM 1 already occupied”

- > All peripheral devices have to be disconnected from the PC to vacate “COM 1”
- > Shut down the PC and arrange a restart
- > Insert the AFH 12 converter and choose COM 1 manually (see above)
- > After the RS 232 Converter has been assigned to the „COM 1“, the other peripheral device can be re-inserted again.
- > Under certain circumstances, this procedure of manual assignment of the COM-Port has to be effected after each PC-Start.

## Brief Instruction

### USB Converter Installation – SAUTER AFH 12

#### **3. The AFH 12 USB converter / adapter cannot be found among “Device Manager”**

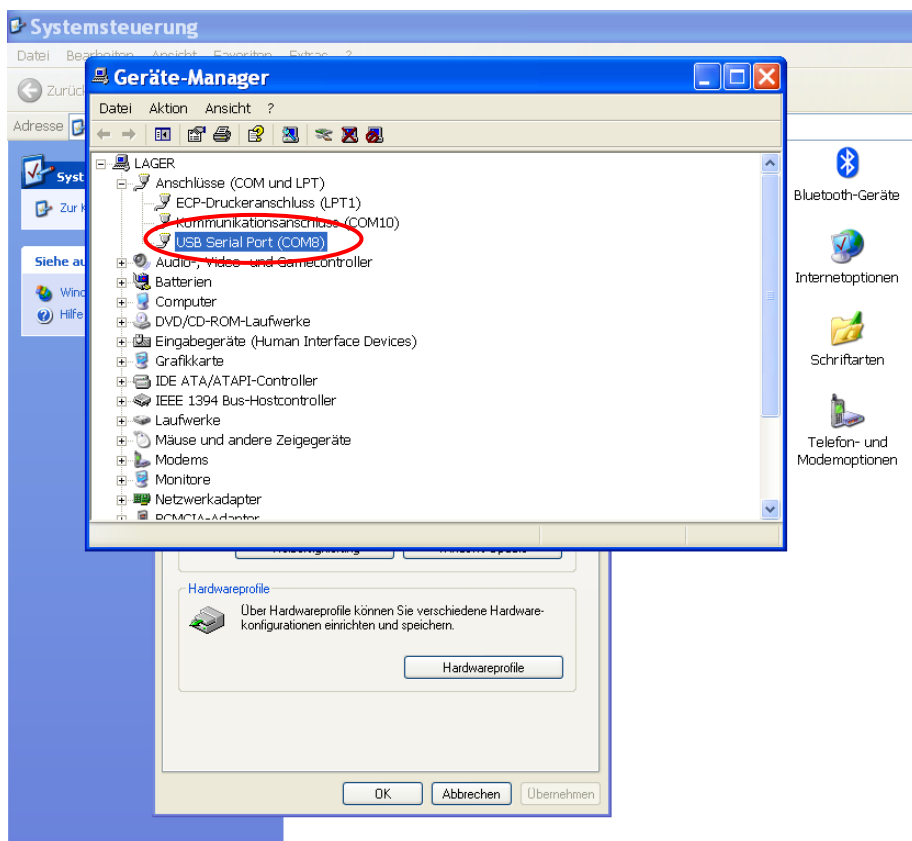
> Insert the installation CD and conduct (mini-CD)

> Process of installation, see above

#### **4. Installation of the Driver, if the CD doesn't install itself on her own:**

1. Insert the USB converter into the PC

2. Access the USB converter in “Device Manager”

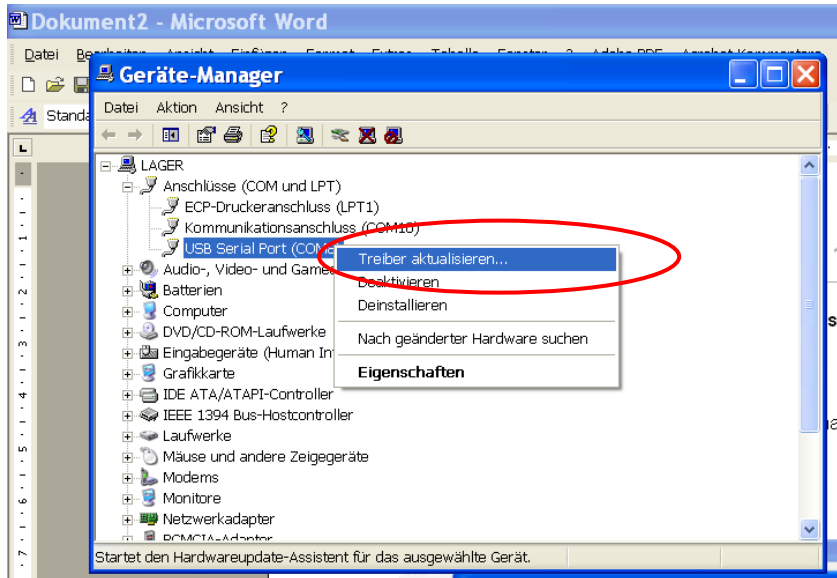


3. Click at the selected device with the right mouse button

## Brief Instruction

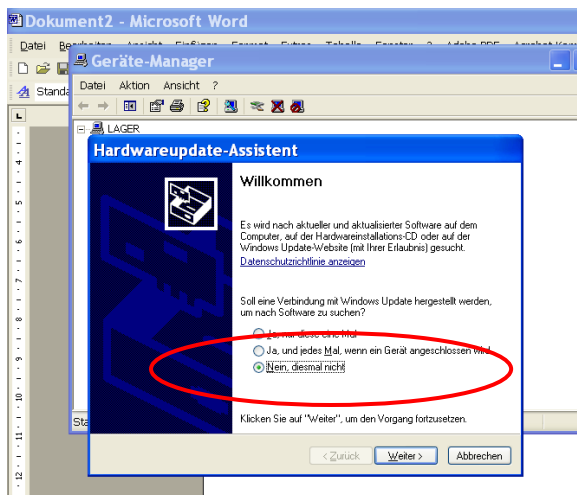
### USB Converter Installation – SAUTER AFH 12

4. Select „Driver update“



5. Insert Driver CD into PC

6. Click „No, this time no“ at the question of the driver online-research.



7. Select: „Install Software automatically“

8. Select applicable driver in the list of recommendation

9. Install. Finish.